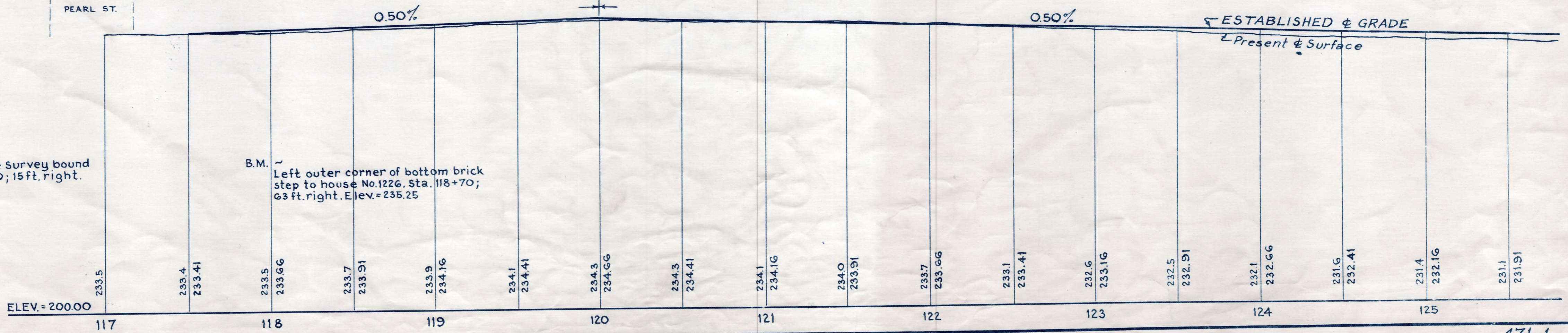
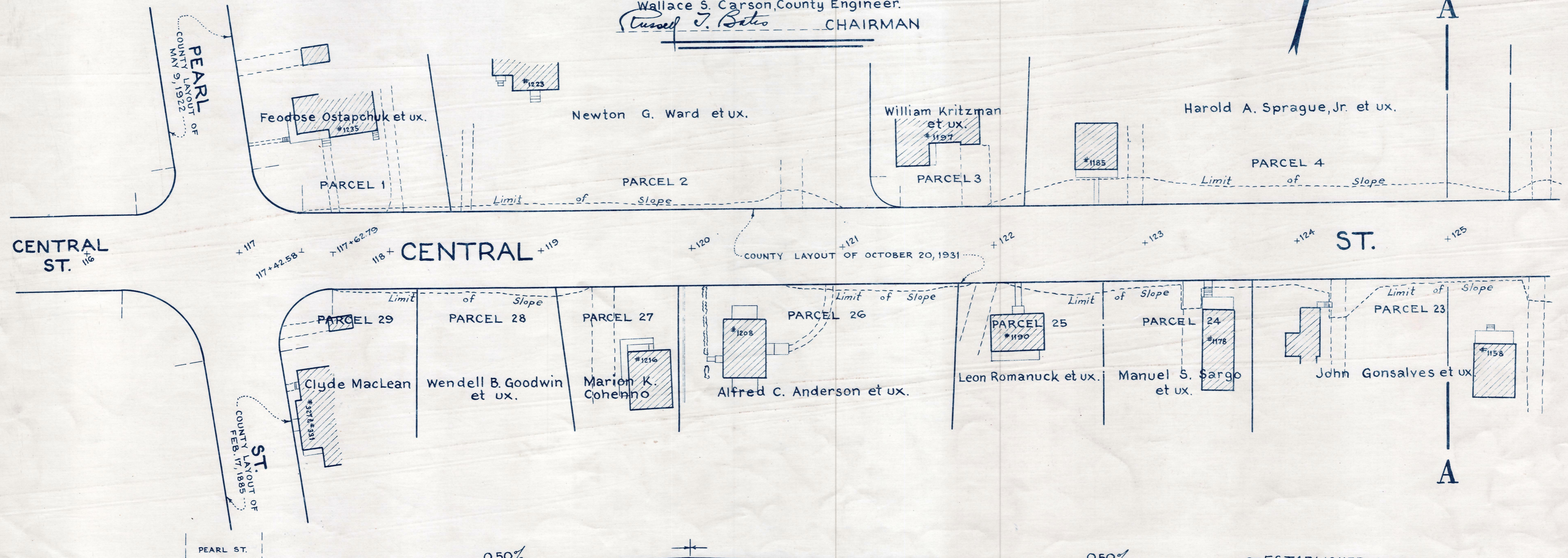
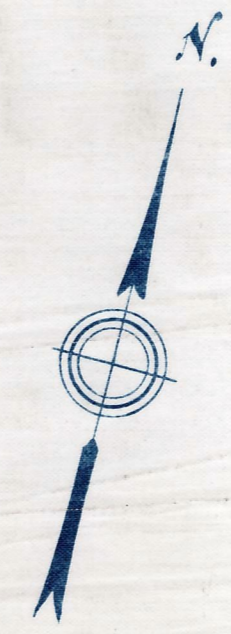


Plan showing
Profile and Slope Easements
for the construction of a portion of
CENTRAL STREET, STOUGHTON

from
PEARL ST. TO WASHINGTON ST.
as made by the Norfolk County Commissioners
by Return dated July 5, 1960
Horizontal Scale: 1 inch = 40 feet.
Vertical Scale: 1 inch = 8 feet.
Wallace S. Carson, County Engineer.

Wessel J. Bates CHAIRMAN



Bench Mark:
A U.S.C. & G.S. and State Survey bound
No. M 138 MB. Sta. 129+30; 15 ft. right.
Elev. = 229.22

B.M. ~
Left outer corner of bottom brick
step to house No. 1226, Sta. 118+70;
63 ft. right. Elev. = 235.25