

Plan and Profile  
showing the Relocation and Widening  
of a portion of  
**LOVERING STREET, MEDWAY**

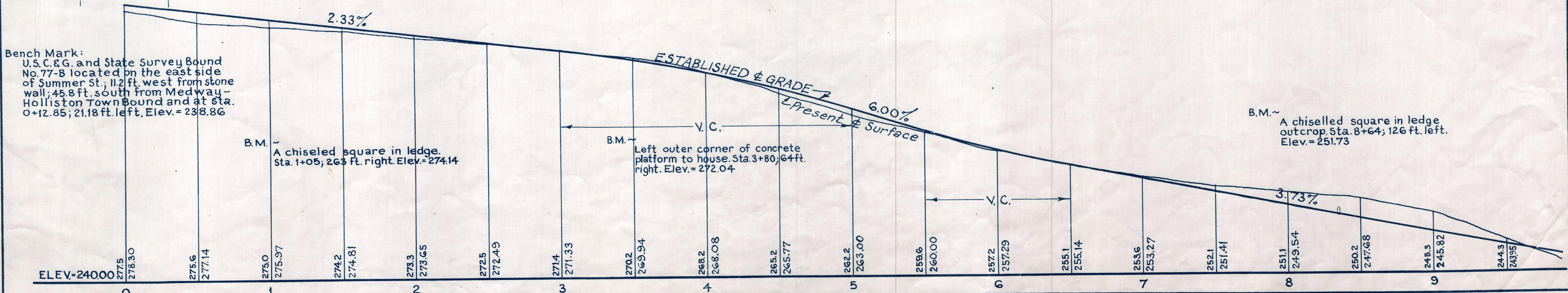
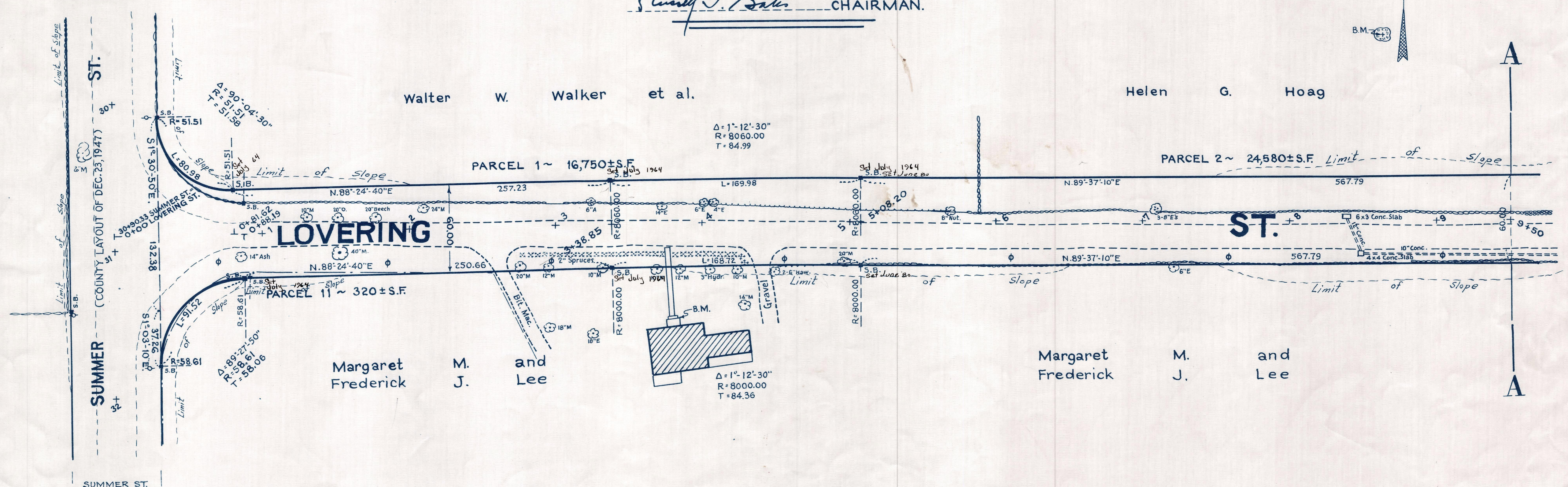
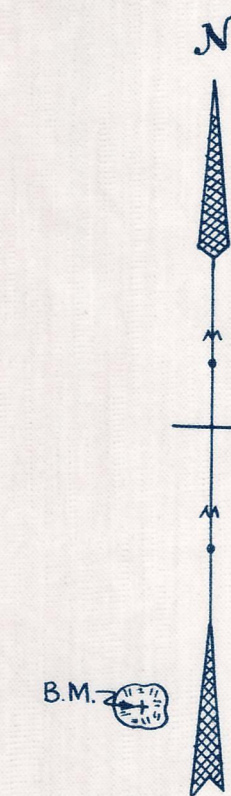
between  
SUMMER STREET AND WINTHROP STREET

as made by the Norfolk County Commissioners  
by Return dated November 13, 1962

Horizontal Scale: 1 inch = 40 feet.  
Vertical Scale: 1 inch = 8 feet.

Wallace S. Carson, County Engineer.

*Samuel J. Bates* CHAIRMAN.



Bench Mark:  
U.S.C. & G. and State Survey Bound  
No. 77-B located on the east side  
of Summer St.; 11.2 ft. west from stone  
wall, 45.8 ft. south from Medway -  
Holliston Town Bound and at Sta.  
0+12.85; 21.18 ft. left. Elev. = 238.86

B.M. ~  
A chiseled square in ledge.  
Sta. 1+05; 263 ft. right. Elev.=274.14

B.M. ~  
Left outer corner of concrete  
platform to house. Sta. 3+80; 64 ft.  
right. Elev.=272.04

B.M. ~  
A chiseled square in ledge  
outcrop. Sta. 8+64; 126 ft. left.  
Elev.=251.73