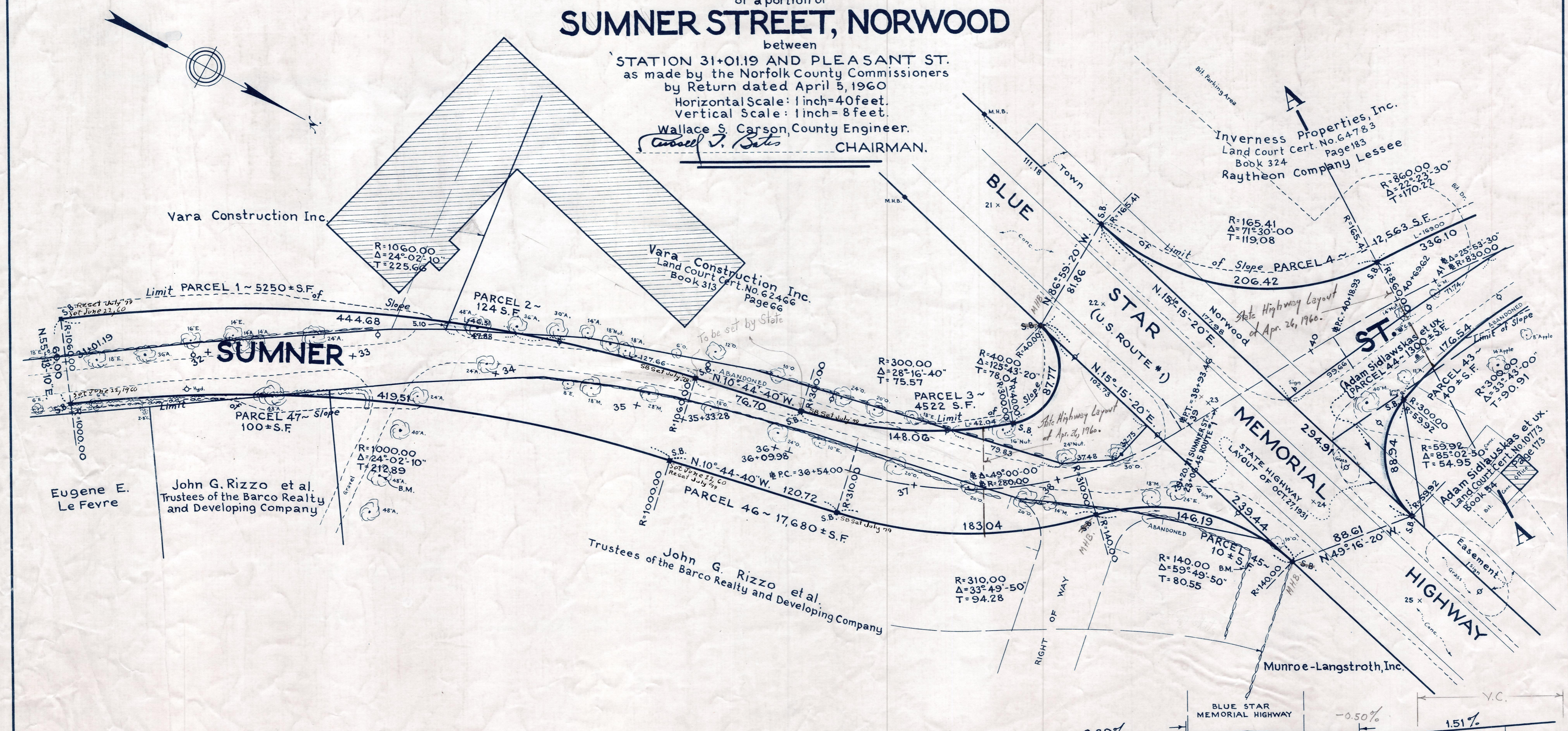


Plan and Profile
showing the Relocation and Widening
of a portion of
SUMNER STREET, NORWOOD

between
STATION 31+01.19 AND PLEASANT ST.
as made by the Norfolk County Commissioners
by Return dated April 5, 1960
Horizontal Scale: 1 inch=40 feet.
Vertical Scale: 1 inch= 8 feet.

Wallace S. Carson, County Engineer.
W. Bates CHAIRMAN.



Profile view showing elevation data for stations 31 to 41. The profile includes a dashed line for 'Present & Surface' and a solid line for 'ESTABLISHED GRADE'. Vertical curve (V.C.) data is provided for several sections.

Station	Elevation	Notes
31	106.1	
31	106.83	ELEV.=95.00
32	106.2	
32	107.17	
32	106.8	
32	107.68	
33	107.5	
33	108.55	
33	108.9	
33	109.60	B.M. Vertical spike in 48" Ash. Sta. 33+20; 80 ft. right. Elev. = 113.98
34	110.5	
34	110.65	
34	112.2	
34	111.70	
35	113.0	
35	112.75	
35	114.5	
35	113.80	
36	116.1	
36	114.85	
36	117.0	
36	115.90	
37	117.9	
37	116.95	
37	118.0	
37	117.83	
38	118.3	
38	118.35	
38	118.3	
38	118.69	
38	118.9	
38	119.04	B.M. A chiseled square in bedstone of wall Sta. 38+80; 105 ft. right. Elev. = 123.34
39	119.25	
39	119.6	
39	119.98	
39	119.4	
40	116.4	
40	119.20	
40	117.1	
40	119.96	Bench Mark: A U.S.C. & G.S. and State Survey bound No. M1F. Sta. 27+54 Blue Star Memorial Highway; 38 ft. right. Elev. = 119.36
41	117.6	
41	120.71	

REC. IN REGISTRY BK 3810-90 4-21-60
PL. BK. 208 NO. 480-483 INCL. 468-1

Date of Entry April 26, 1960