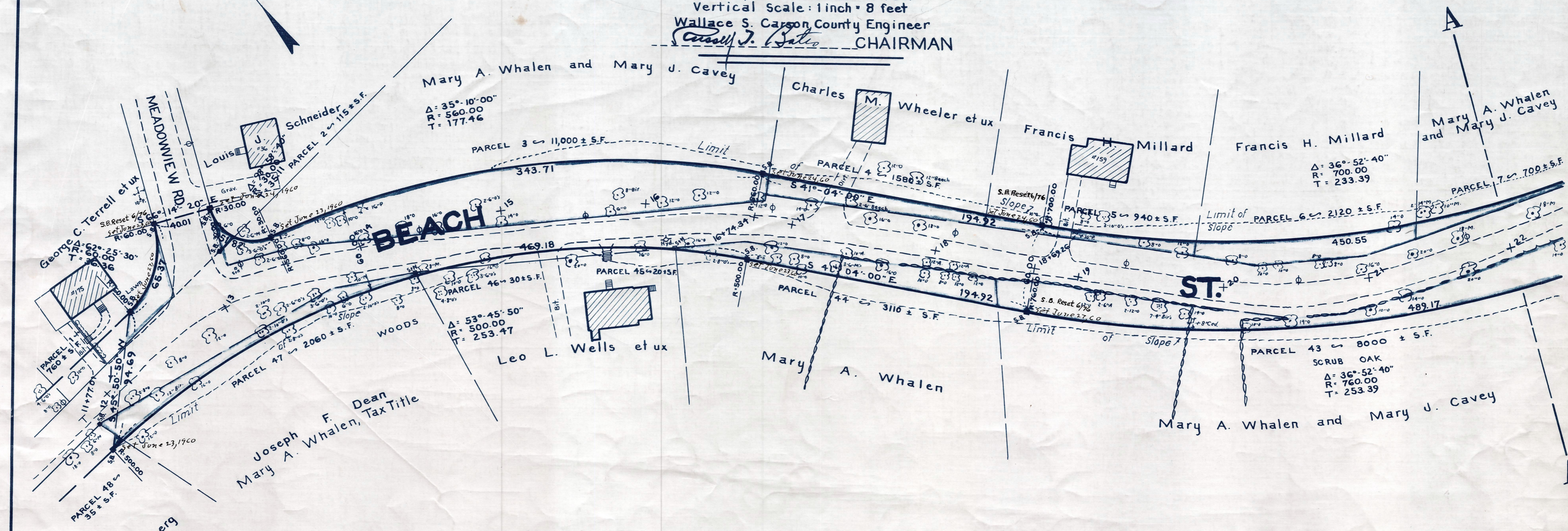
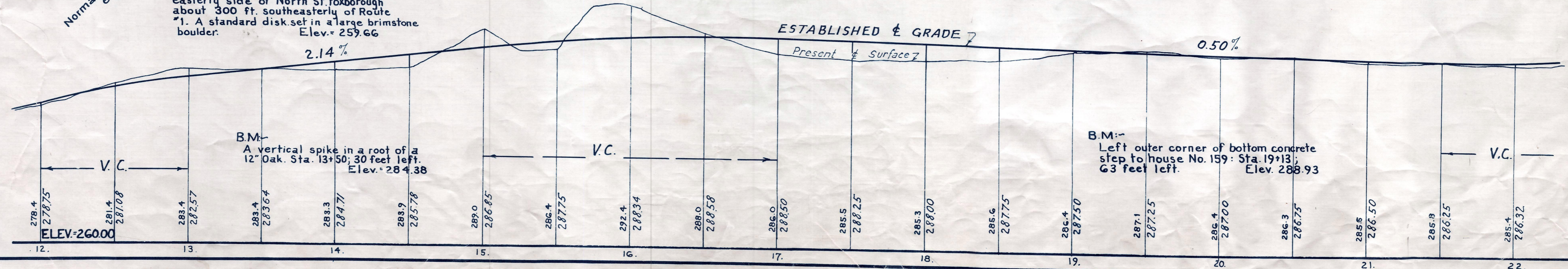


Plan and Profile
showing the Relocation and Widening
of a portion of
BEACH STREET, FOXBOROUGH
between

MEADOWVIEW ROAD AND MECHANIC STREET
as made by the Norfolk County Commissioners
by Return dated: October 20, 1959
Horizontal Scale: 1 inch = 40 feet
Vertical Scale: 1 inch = 8 feet
Wallace S. Carson, County Engineer
W. J. Bates CHAIRMAN



Bench Mark:
A U.S.C. & G.S. and State Survey
Bound No. C-131 located on the
easterly side of North St. Foxborough
about 300 ft. southeasterly of Route
#1. A standard disk set in a large brimstone
boulder. Elev. = 259.66



Date of Entry Dec. 5, 1959.