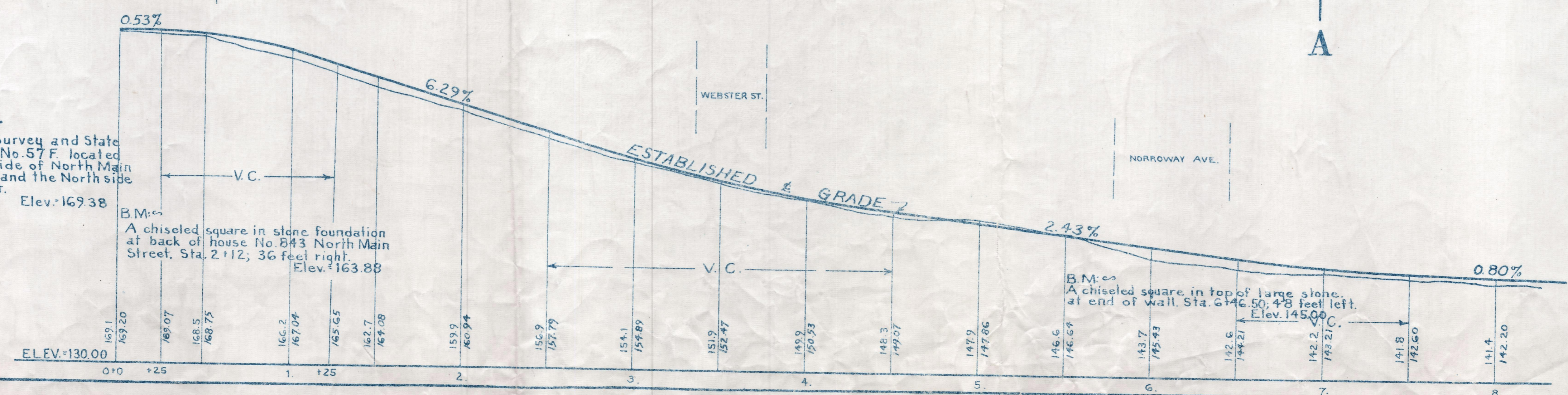
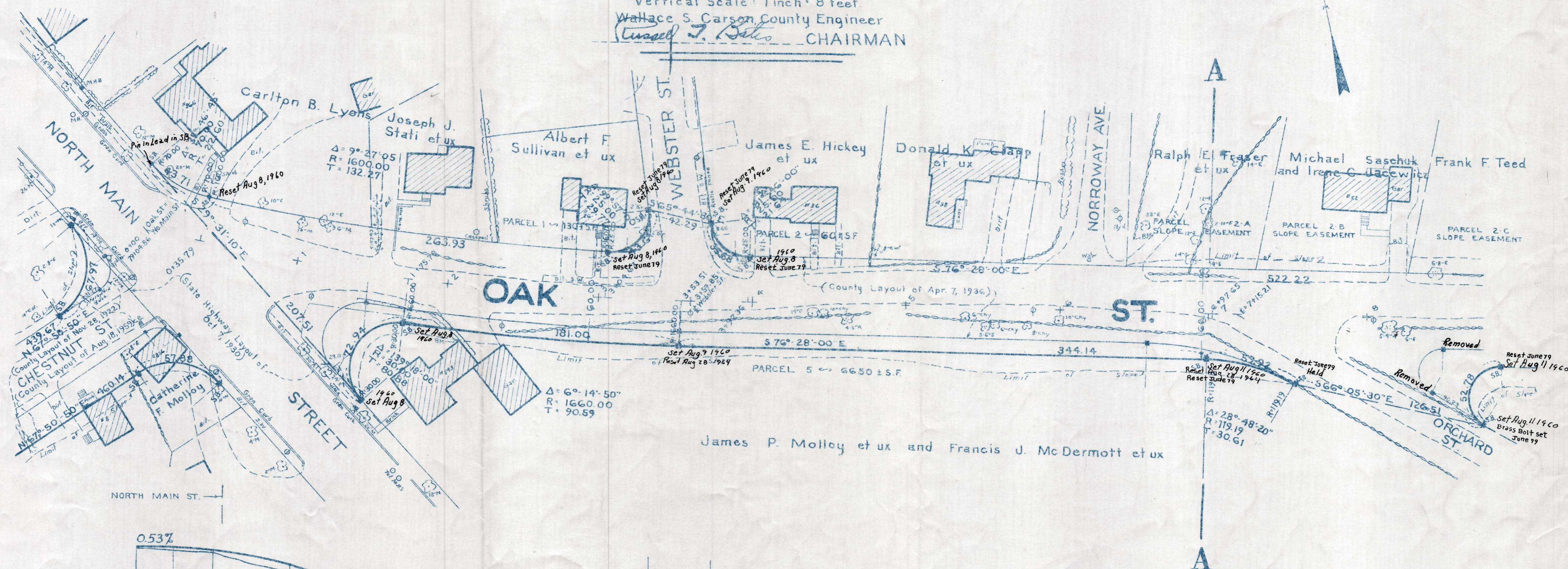


Plan and Profile  
showing the Relocation and Widening  
of a portion of

# OAK STREET, RANDOLPH

between  
NORTH MAIN STREET AND OAKLAND STREET  
as made by the Norfolk County Commissioners  
by Return dated August 18, 1959  
Horizontal Scale: 1 inch = 40 feet.  
Vertical Scale: 1 inch = 8 feet.

Wallace S. Carson County Engineer  
*Russell J. Bates* CHAIRMAN



Bench Marks:  
A. U.S.C. & G. Survey and State  
Survey Bound No. 57 F. located  
on the West side of North Main  
St. (Rte. No. 28) and the North side  
of Chestnut St.  
Elev. 169.38

B.M.:  
A chiseled square in stone foundation  
at back of house No. 843 North Main  
Street, Sta. 2+12; 36 feet right.  
Elev. 163.88