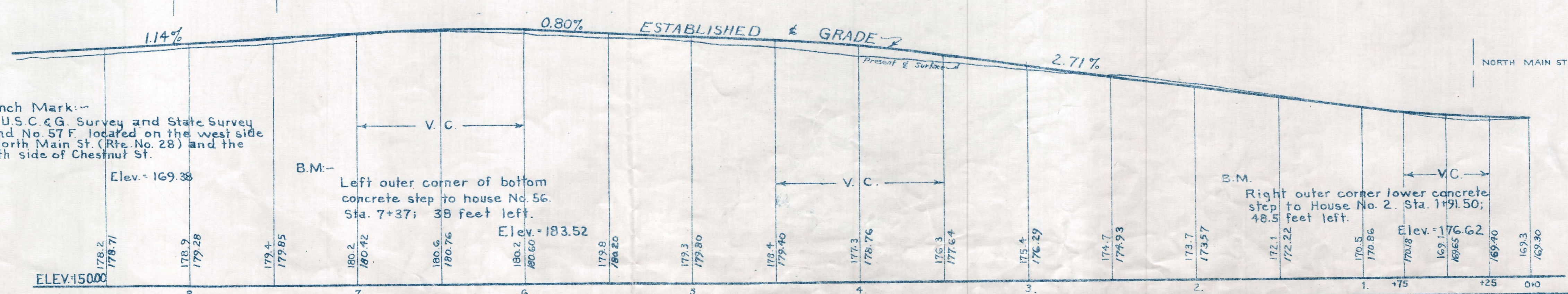
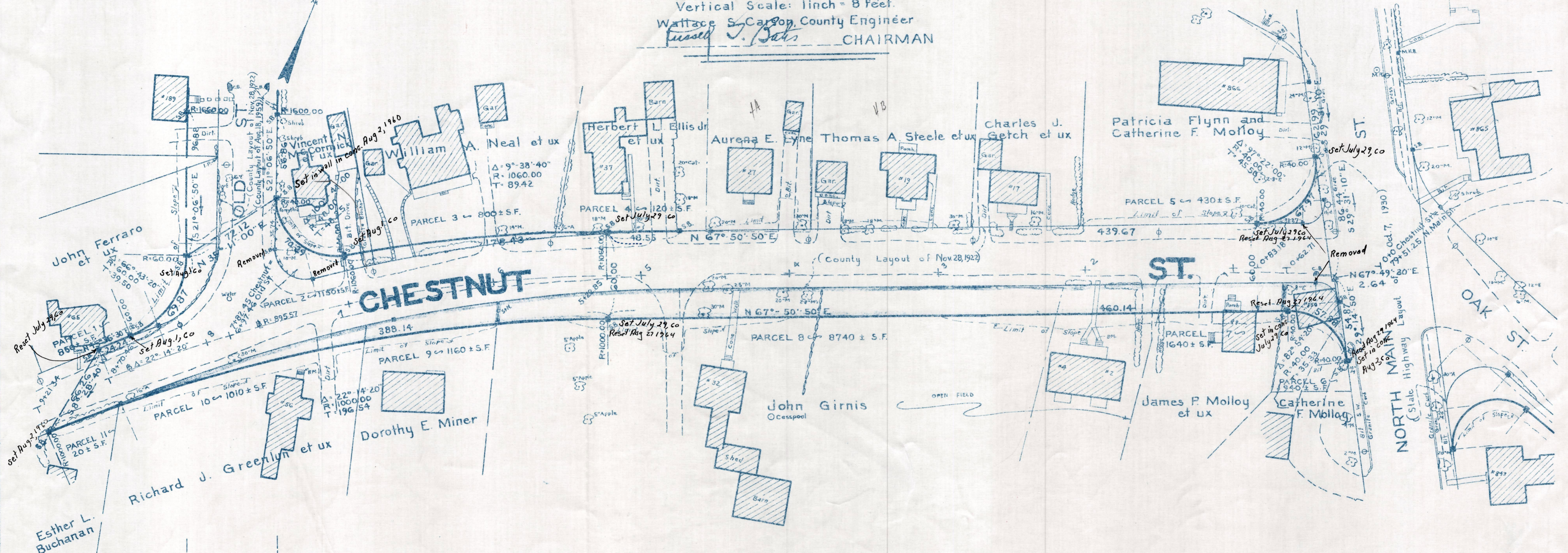


Plan and Profile showing the Relocation and Widening of a portion of **CHESTNUT STREET, RANDOLPH**

between
OLD STREET AND NORTH MAIN STREET
as made by the Norfolk County Commissioners
by Return dated: August 18, 1959

Horizontal Scale: 1 inch = 40 feet
Vertical Scale: 1 inch = 8 feet.

Wallace S. Carson, County Engineer
Russell J. Bates CHAIRMAN



Bench Mark:-
A U.S.C. & G. Survey and State Survey
Bound No. 57 F. located on the west side
of North Main St. (Rte. No. 28) and the
north side of Chestnut St.

Elev. = 169.38

B.M.:-
Left outer corner of bottom
concrete step to house No. 56.
Sta. 7+37; 38 feet left.

Elev. = 183.52

B.M.:-
Right outer corner lower concrete
step to House No. 2. Sta. 1+91.50;
48.5 feet left.

Elev. = 176.62