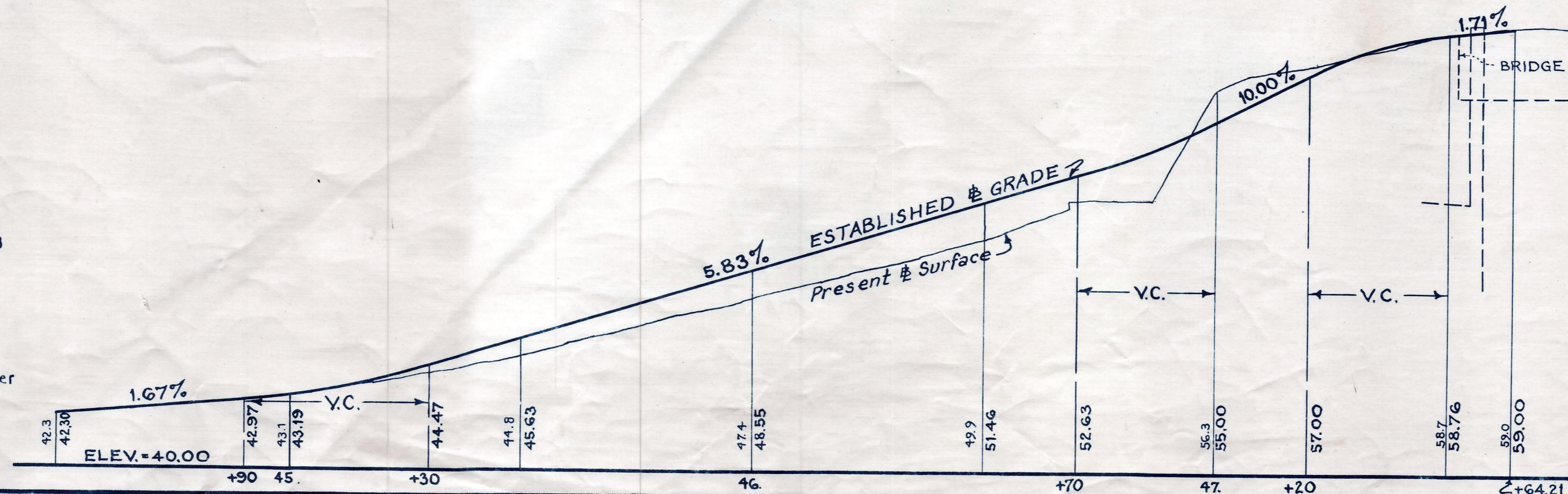
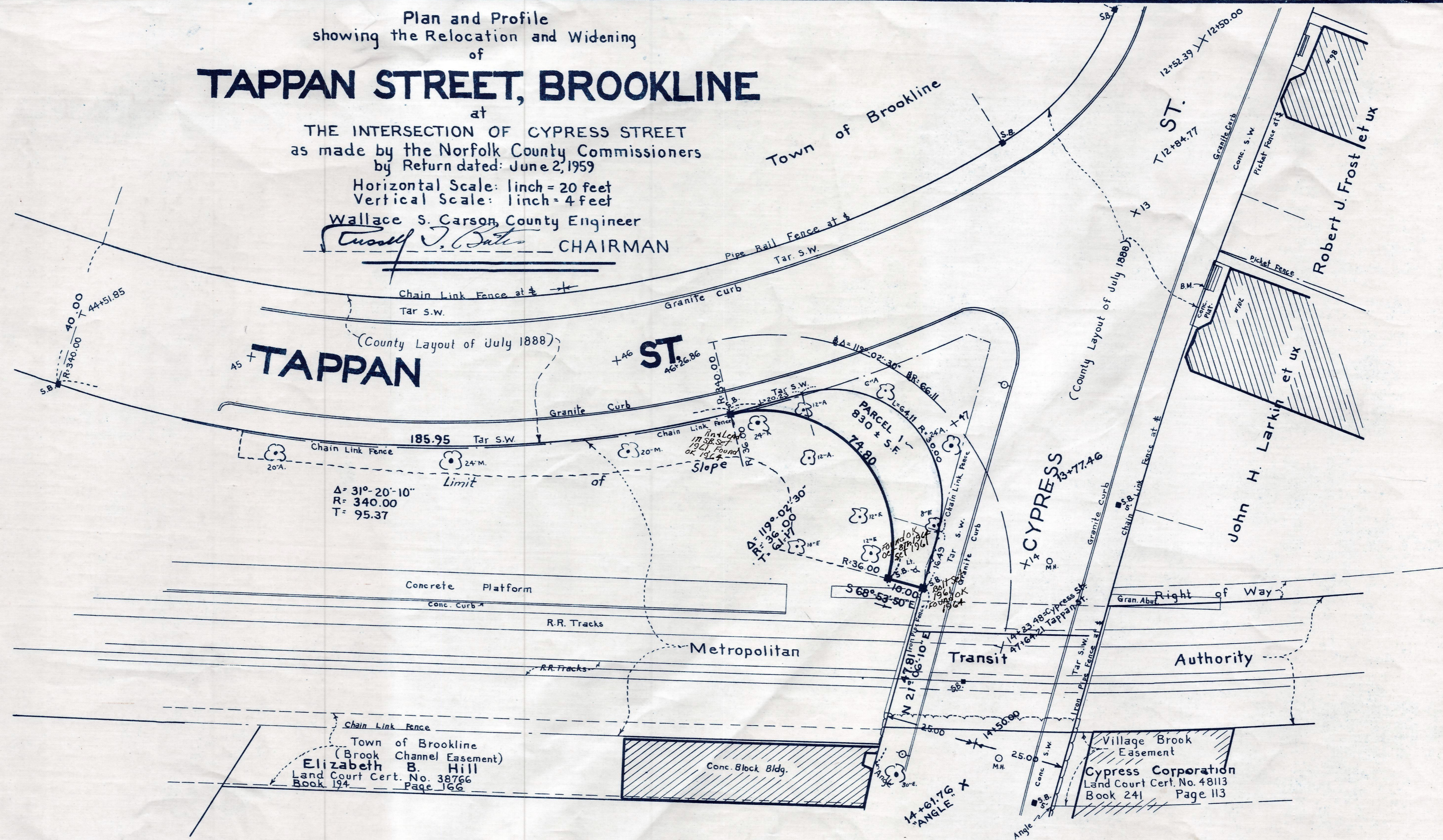
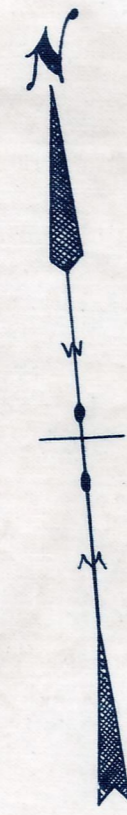


Plan and Profile
showing the Relocation and Widening
of
TAPPAN STREET, BROOKLINE

at
THE INTERSECTION OF CYPRESS STREET
as made by the Norfolk County Commissioners
by Return dated: June 2, 1959

Horizontal Scale: 1 inch = 20 feet
Vertical Scale: 1 inch = 4 feet

Wallace S. Carson, County Engineer
W. S. Carson CHAIRMAN



Bench Mark:-
A U.S.C. & G.S. and State Survey
bound No. M9CP Elev. = 198.8

B.M.:-
A chiseled square in right outer corner
of step to side entrance to Industrial
Arts Building on Tappan Street.
Elev. = 45.16

B.M.:-
Right outer corner of bottom
concrete step to house No. 102
Sta. 13+13; 25 feet left. Elev. = 54.28