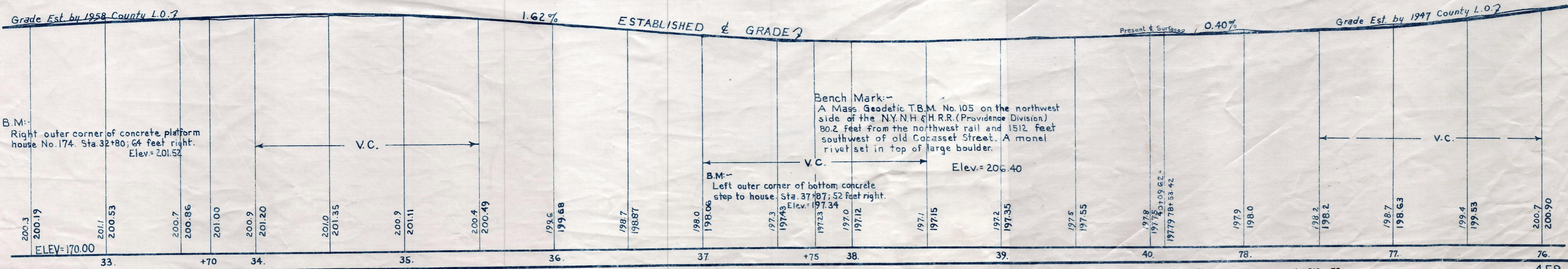
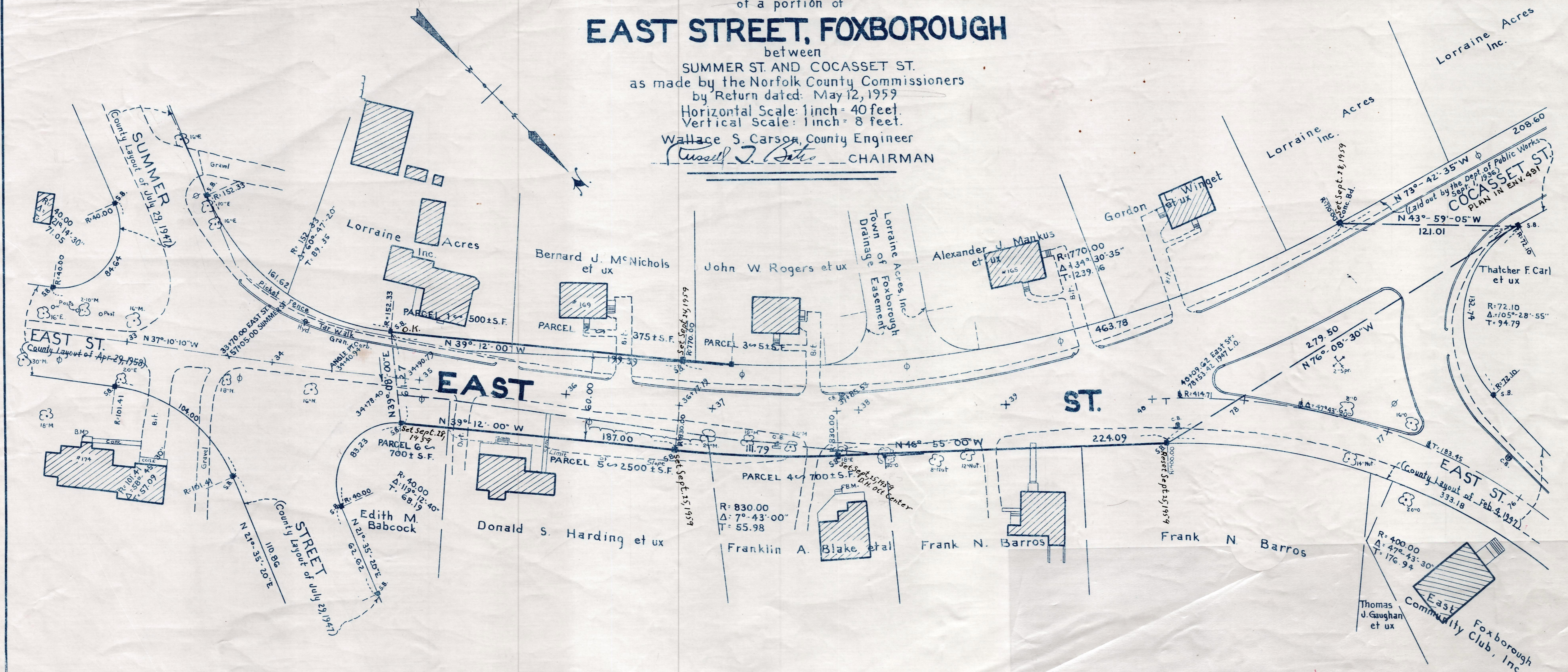


Plan and Profile showing the Relocation and Widening of a portion of **EAST STREET, FOXBOROUGH**

between
SUMMER ST. AND COCASSET ST.
as made by the Norfolk County Commissioners
by Return dated: May 12, 1959
Horizontal Scale: 1 inch = 40 feet.
Vertical Scale: 1 inch = 8 feet.
Wallace S. Carson, County Engineer
Russell J. Bates CHAIRMAN



Grade Est. by 1958 County L.O. 7

1.62% ESTABLISHED & GRADE?

Present & Surface 0.40%

Grade Est. by 1947 County L.O. 7

B.M. -
Right outer corner of concrete platform
house No. 174. Sta. 32+80; 64 feet right.
Elev. = 201.52

Bench Mark -
A Mass. Geodetic T.B.M. No. 105 on the northwest
side of the N.Y.N.H. & H.R.R. (Providence Division)
80.2 feet from the northwest rail and 1512 feet
southwest of old Cocasset Street. A monel
rivet set in top of large boulder.

B.M. -
Left outer corner of bottom concrete
step to house. Sta. 37+87; 52 feet right.
Elev. = 197.34

REC. IN REGISTRY BK 372B-171
PL. BK. 207 NO. 590

5-27-59

459