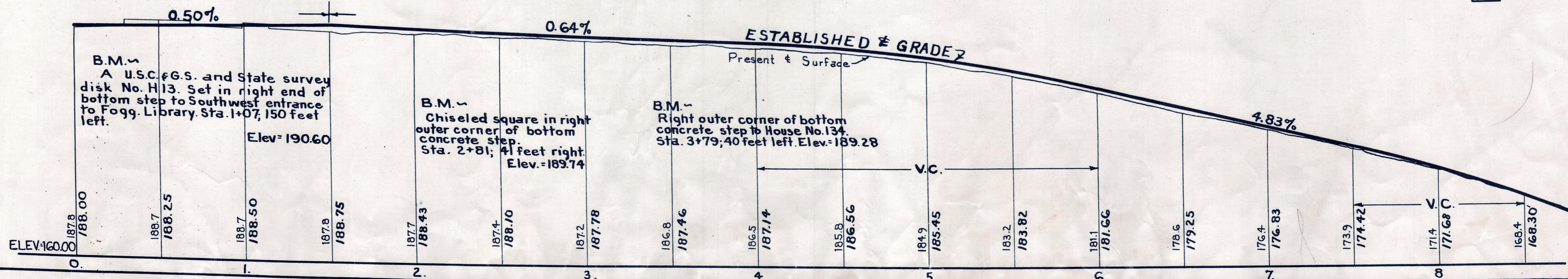
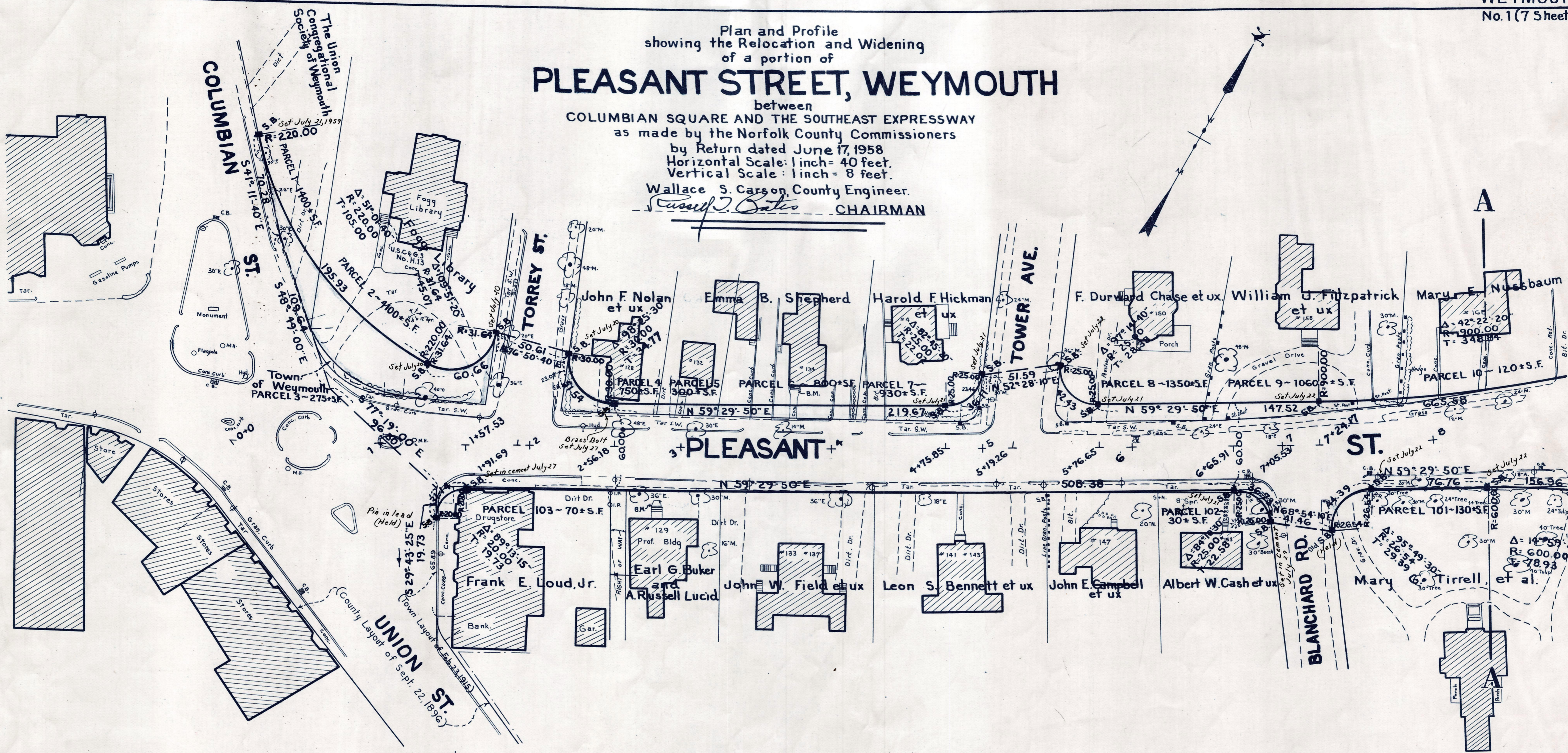


Plan and Profile
showing the Relocation and Widening
of a portion of
PLEASANT STREET, WEYMOUTH

between
COLUMBIAN SQUARE AND THE SOUTHEAST EXPRESSWAY
as made by the Norfolk County Commissioners
by Return dated June 17, 1958
Horizontal Scale: 1 inch = 40 feet.
Vertical Scale: 1 inch = 8 feet.

Wallace S. Carson, County Engineer.
Russell J. Bates CHAIRMAN



B.M. ~
A U.S.C. & G.S. and State survey
disk No. H13. Set in right end of
bottom step to Southwest entrance
to Fogg. Library. Sta. 1+07; 150 feet
left.
Elev = 190.60

B.M. ~
Chiseled square in right
outer corner of bottom
concrete step.
Sta. 2+81; 4 feet right.
Elev. = 189.74

B.M. ~
Right outer corner of bottom
concrete step to House No. 134.
Sta. 3+79; 40 feet left. Elev. = 189.28