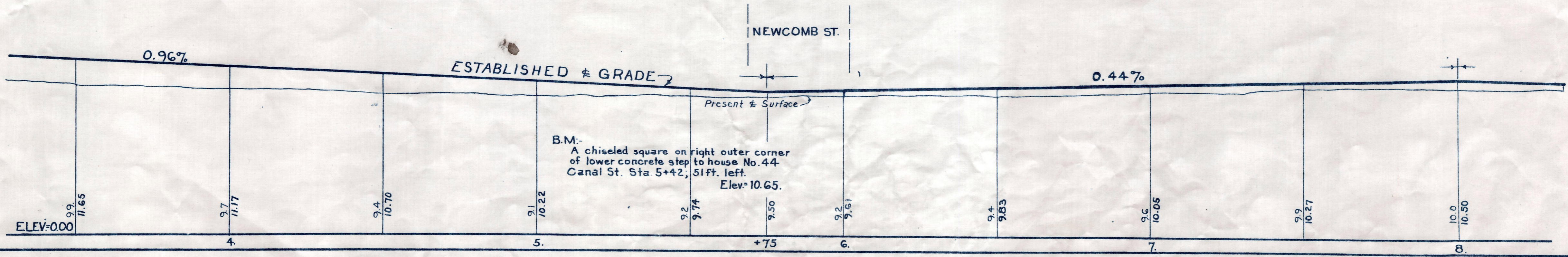
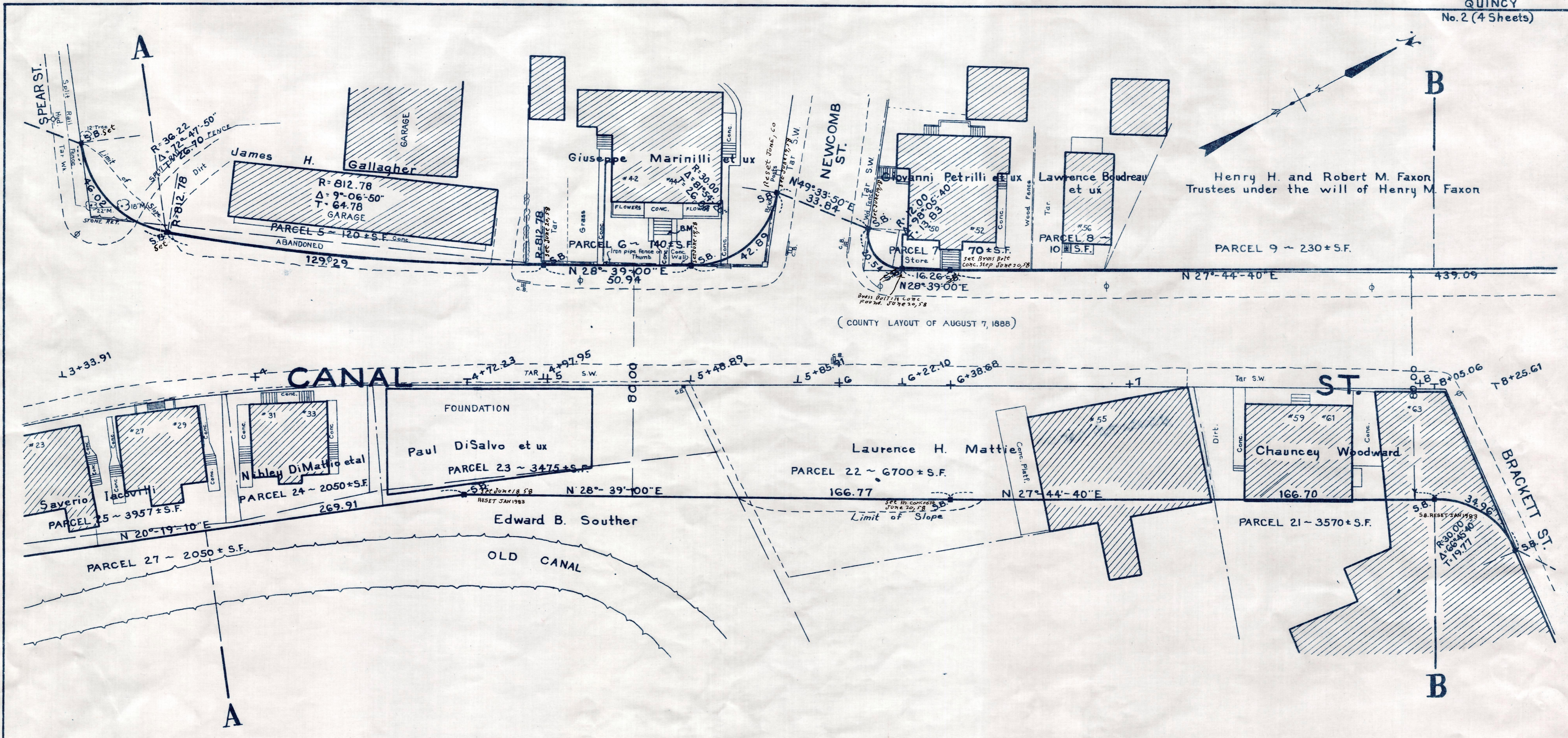


Henry H. and Robert M. Faxon
Trustees under the will of Henry M. Faxon

(COUNTY LAYOUT OF AUGUST 7, 1888)



B.M.:
A chiseled square on right outer corner
of lower concrete step to house No. 44.
Canal St. Sta 5+42, 51 ft. left.
Elev=10.65.

CJM PLET