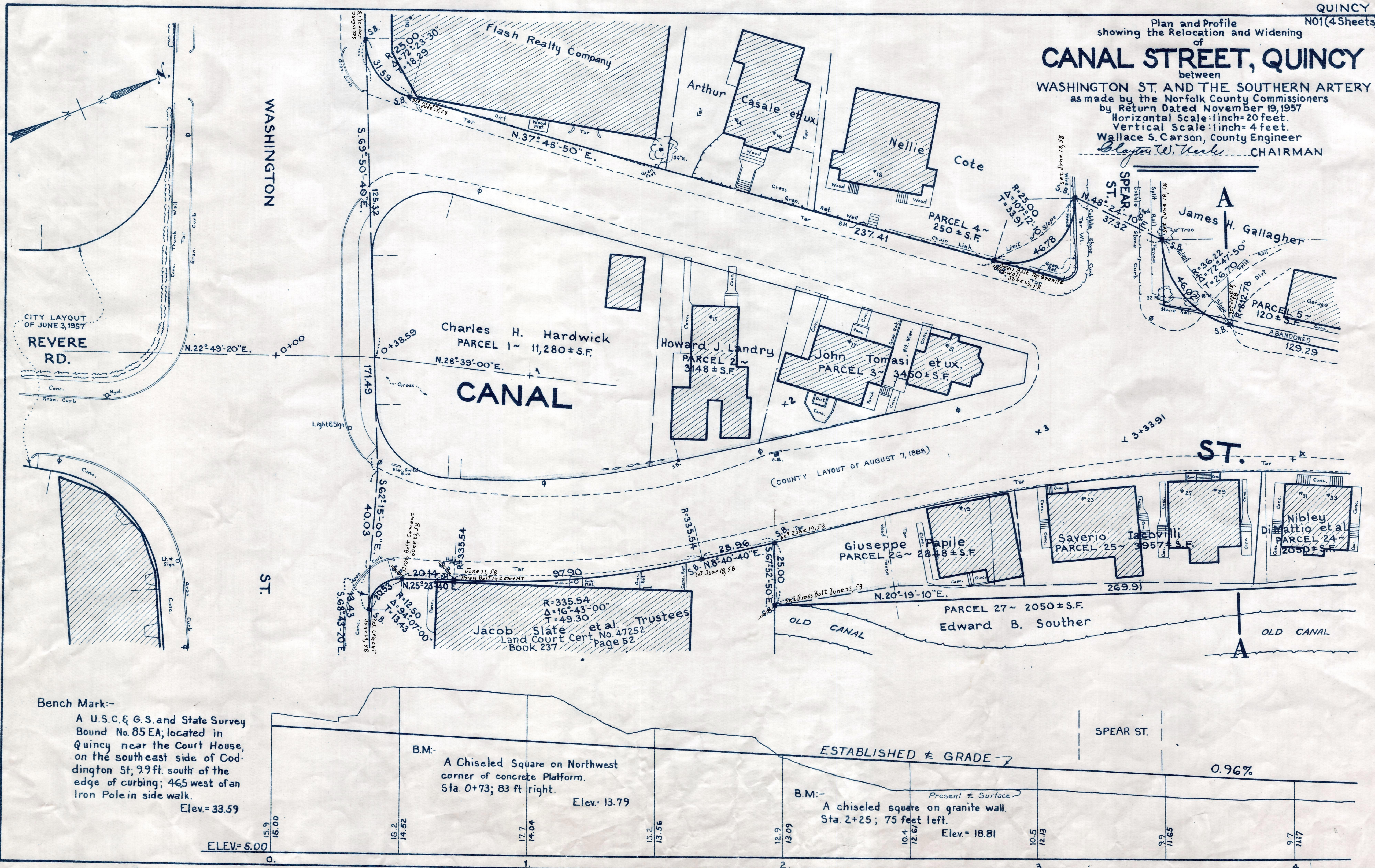


CANAL STREET, QUINCY

between WASHINGTON ST. AND THE SOUTHERN ARTERY as made by the Norfolk County Commissioners by Return Dated November 19, 1957
Horizontal Scale: 1 inch = 20 feet.
Vertical Scale: 1 inch = 4 feet.
Wallace S. Carson, County Engineer
Clayton W. Verbeke, CHAIRMAN



CITY LAYOUT OF JUNE 3, 1957
REVERE RD.

WASHINGTON

CANAL

ST.

Bench Mark:-
A U.S.C. & G.S. and State Survey Bound No. 85 EA, located in Quincy near the Court House, on the southeast side of Codrington St; 9.9 ft. south of the edge of curbing; 465 west of the Iron Pole in side walk.
Elev. = 33.59

B.M.:-
A Chiseled Square on Northwest corner of concrete Platform.
Sta. 0+73; 83 ft. right.
Elev. = 13.79

B.M.:-
A chiseled square on granite wall.
Sta. 2+25; 75 feet left.
Elev. = 18.81

ELEV. = 5.00