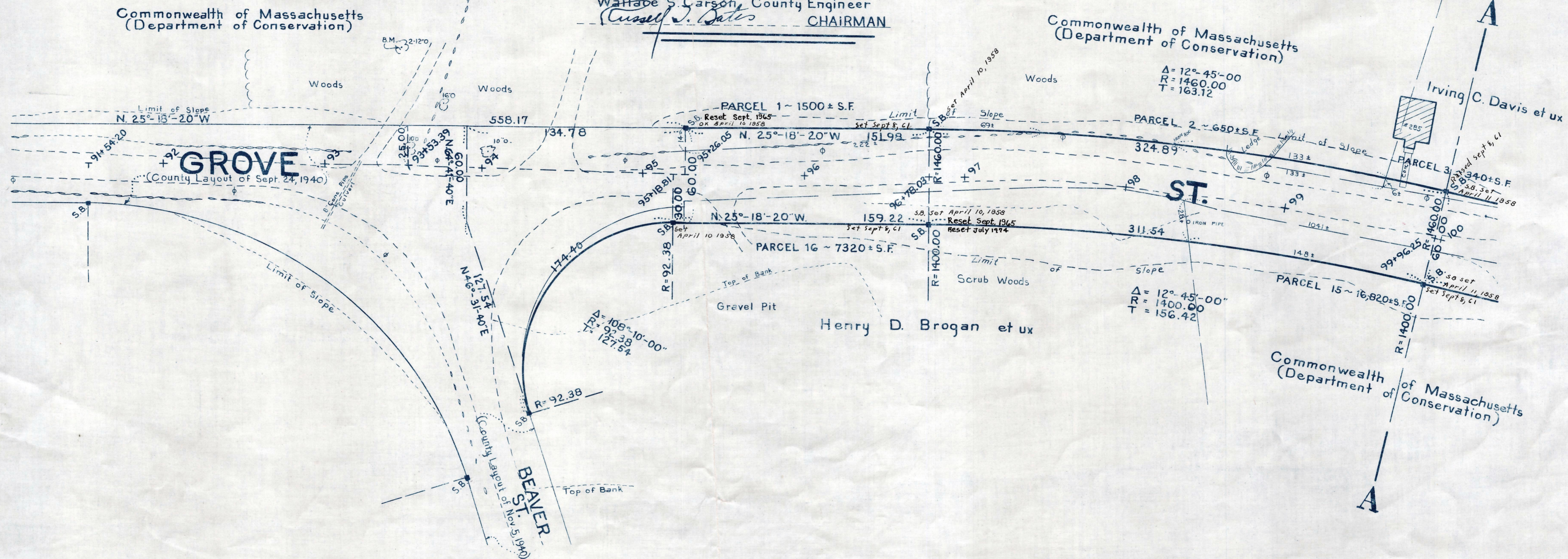


Plan and Profile
showing the Relocation and Widening
of a portion of
GROVE STREET, FRANKLIN

between
BEAVER STREET AND WEST CENTRAL STREET
as made by the Norfolk County Commissioners
by Return dated: October 8, 1957

Horizontal Scale : 1 inch = 40 feet
Vertical Scale : 1 inch = 8 feet
Walter S. Carson, County Engineer
(Cassell J. Bates) CHAIRMAN



B.M.
Vertical Spike in 2-12" Oaks
Sta. 93+50; 75 feet left.
Elev. = 255.47

Bench Mark:
A U.S.C. & G.S. and State survey bound
No. 17 DE. set in the top of a concrete
Monument. Sta. 133+98; 27 feet right.
Elev. = 231.97

