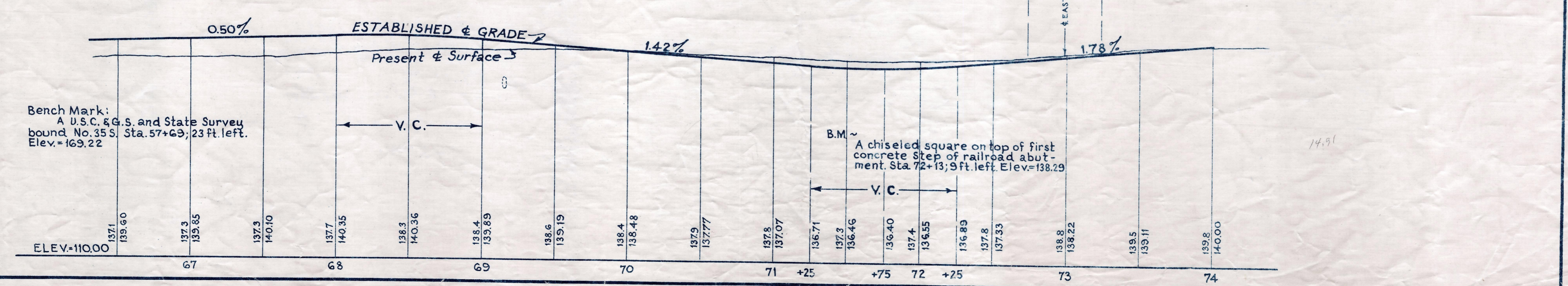
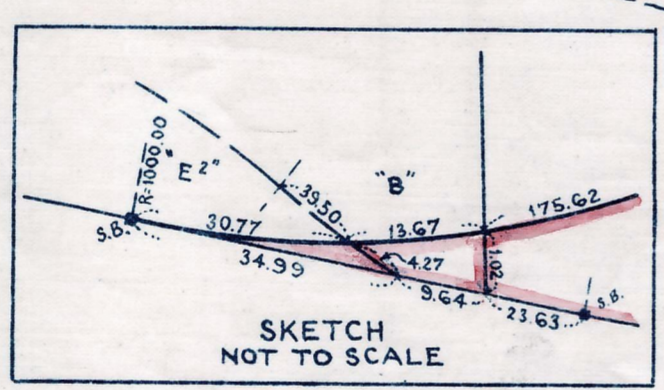
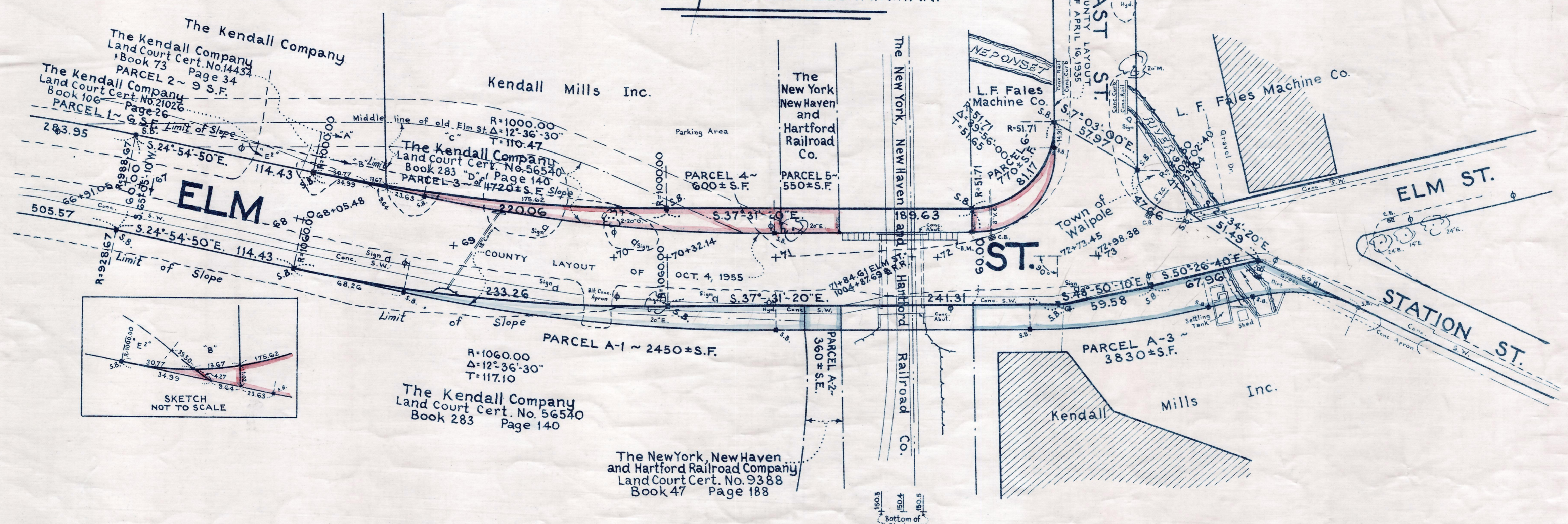
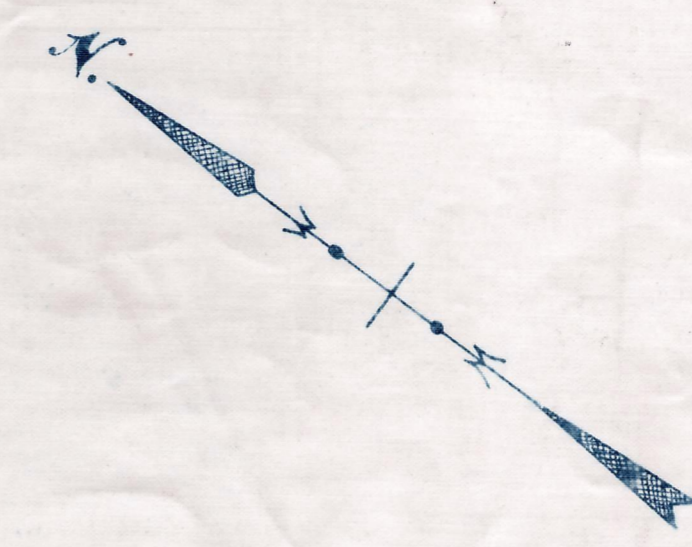


Plan and Profile
showing the Relocation and Widening
of a portion of
ELM STREET, WALPOLE

between
STATION 66+91.05 AND STATION ST.
as made by the Norfolk County Commissioners
by Return dated May 28, 1957
Horizontal Scale: 1 inch = 40 feet.
Vertical Scale: 1 inch = 8 feet.
Wallace S. Carson, County Engineer.
Wallace S. Carson CHAIRMAN.



CRTF. ORDER RELOCATION BK. 3576 P. 325 7-25-57
TKB. BK. 3568 P. 367, PL. BK. 204 PL. 696 6-21-57