

Plan and Profile  
Showing the Relocation and Widening  
of a portion of  
**MAPLE STREET, BELLINGHAM**  
Between

**HARTFORD AVENUE AND PINE STREET**

as made by the Norfolk County Commissioners

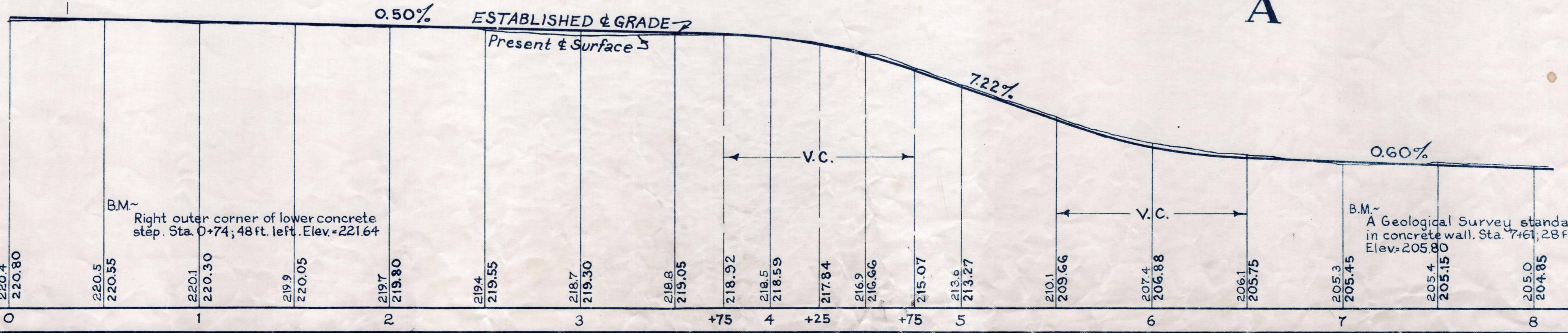
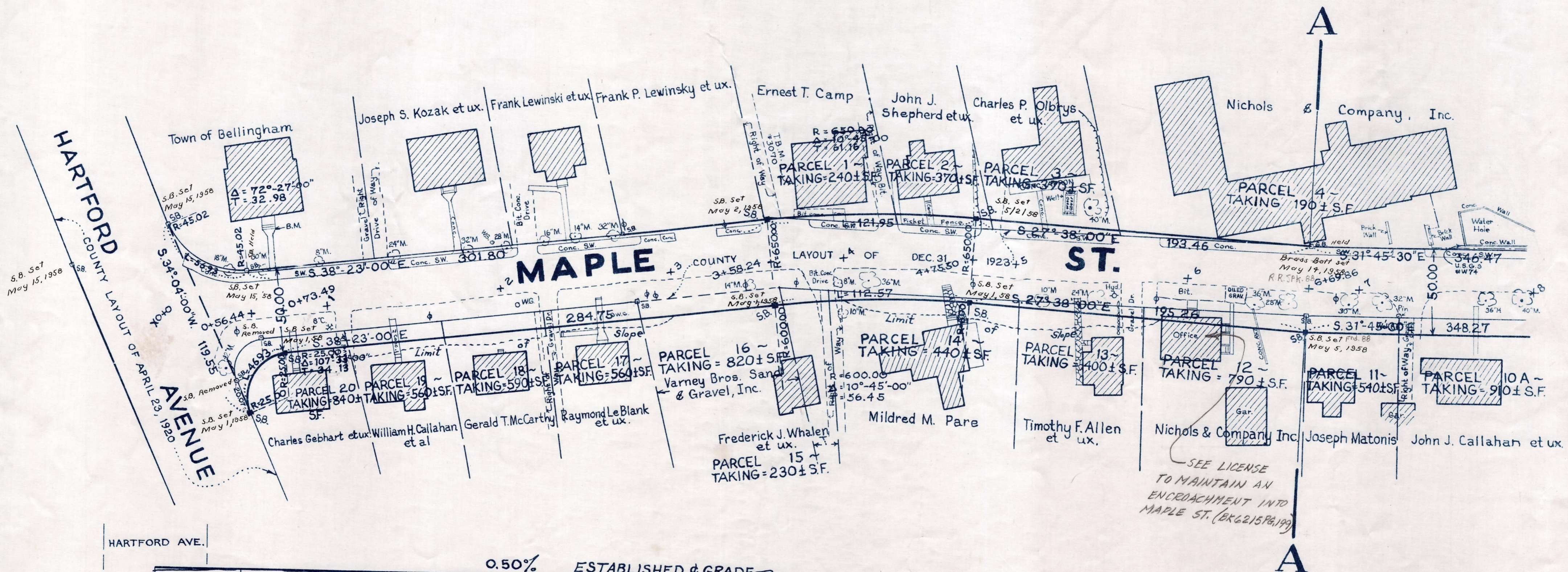
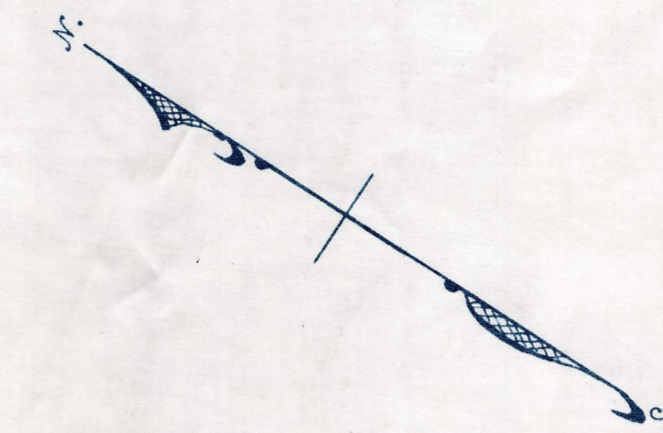
by Return dated Sept. 11, 1956

Horizontal Scale : 1 inch = 40 feet.

Vertical Scale : 1 inch = 8 feet.

Wallace S. Carson, County Engineer.

*Wallace S. Carson* CHAIRMAN.



CRF. ORDER FOR RELOCA. BK. 3594 PG. 68 10-9-57  
TK6. BK 3510 PG. 534, PL. BK. 202 PLS. 1238 & 1239  
REC. 10-3-56

"FEE" 432-1  
Date of Entry: September 11, 1957