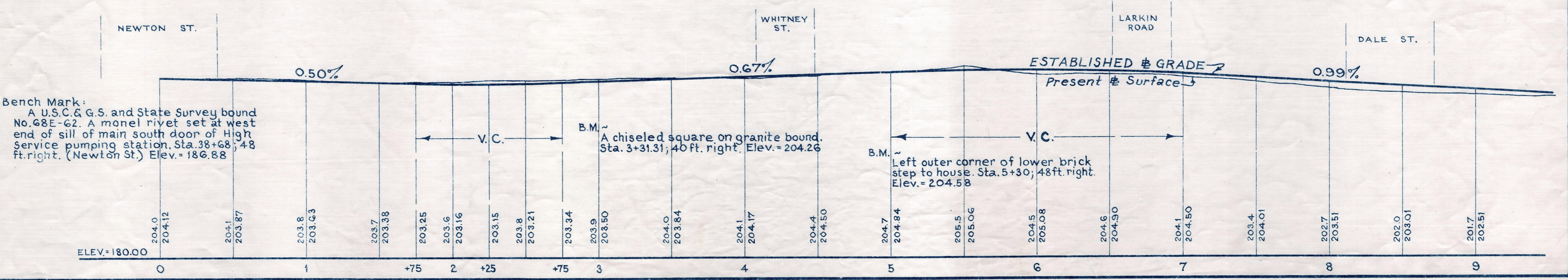
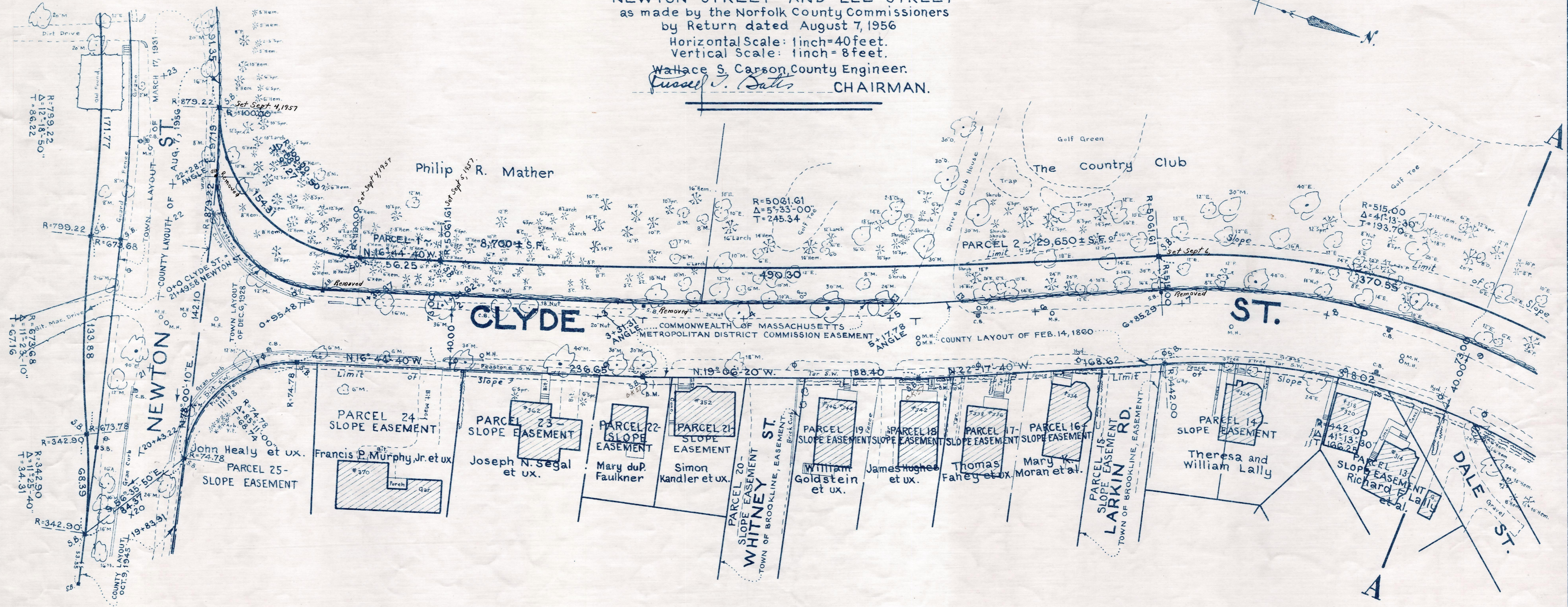
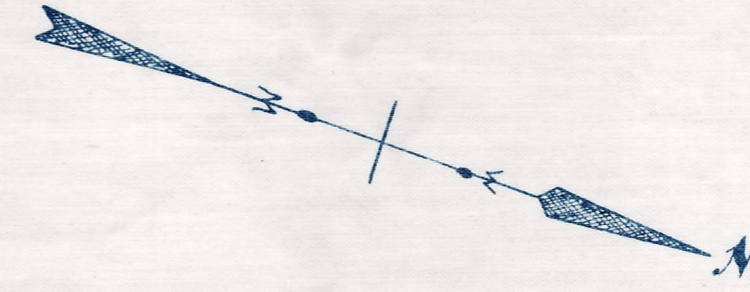


Plan and Profile
showing the Relocation and Widening
of a portion of
CLYDE STREET, BROOKLINE

between
NEWTON STREET AND LEE STREET
as made by the Norfolk County Commissioners
by Return dated August 7, 1956
Horizontal Scale: 1inch=40feet.
Vertical Scale: 1inch=8feet.
Wallace S. Carson County Engineer.
Fusell J. Dalls CHAIRMAN.



Bench Mark:
A U.S.C. & G.S. and State Survey bound
No. 68E-62. A monel rivet set at west
end of sill of main south door of High
Service pumping station, Sta. 38+68, 48
ft. right. (Newton St.) Elev. = 186.88

B.M. A chiseled square on granite bound.
Sta. 3+31.31; 40 ft. right. Elev. = 204.26

B.M. Left outer corner of lower brick
step to house. Sta. 5+30; 48 ft. right.
Elev. = 204.58