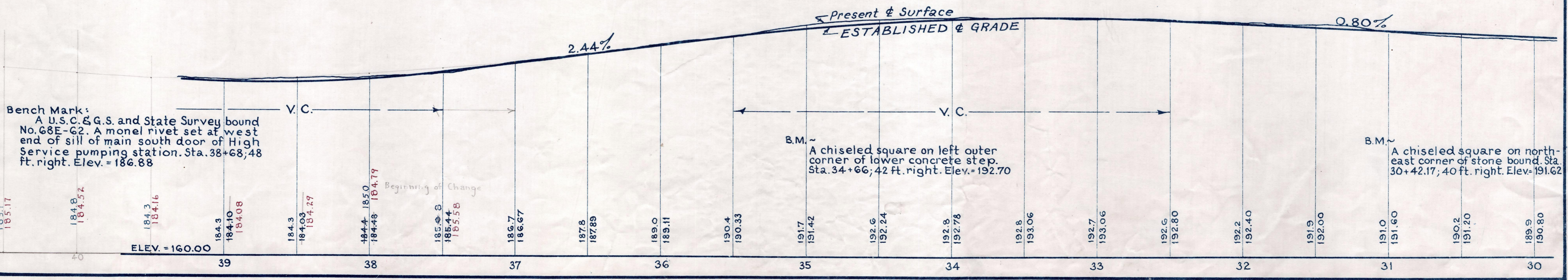
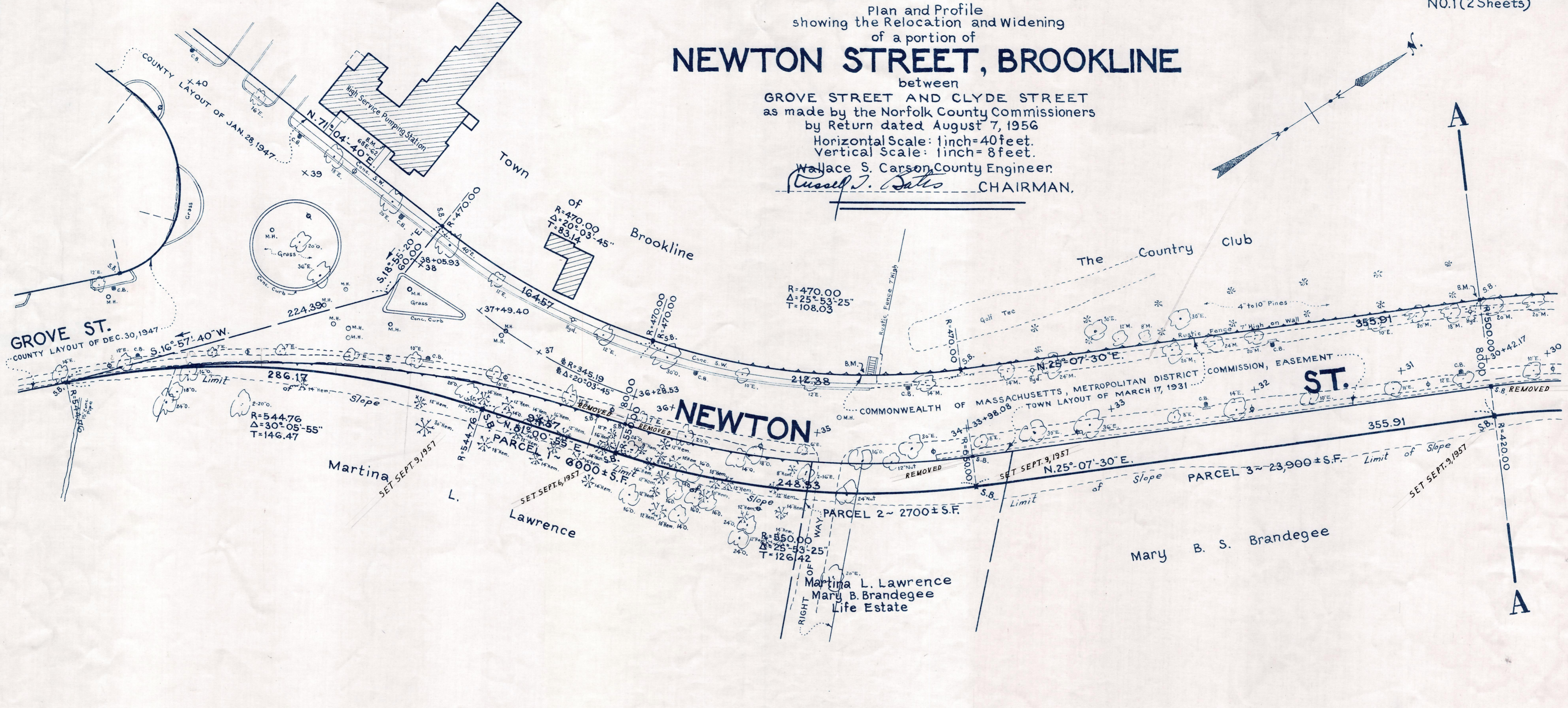


Plan and Profile showing the Relocation and Widening of a portion of **NEWTON STREET, BROOKLINE**

between
GROVE STREET AND CLYDE STREET
as made by the Norfolk County Commissioners
by Return dated August 7, 1956
Horizontal Scale: 1 inch = 40 feet.
Vertical Scale: 1 inch = 8 feet.
Wallace S. Carson, County Engineer.
Russell J. Sates CHAIRMAN.



Bench Mark:
A U.S.C. & G.S. and State Survey bound
No. 68E-62. A monel rivet set at west
end of sill of main south door of High
Service pumping station. Sta. 38+68.48
ft. right. Elev. = 186.88

B.M. ~
A chiseled square on left outer
corner of lower concrete step.
Sta. 34+66; 42 ft. right. Elev. = 192.70

B.M. ~
A chiseled square on north-
east corner of stone bound. Sta.
30+42.17; 40 ft. right. Elev. = 191.62