

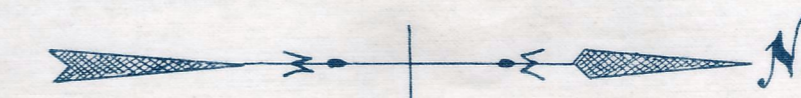
Plan and Profile
showing the Relocation and Widening
of a portion of

MASSAPOAG AVENUE, SHARON

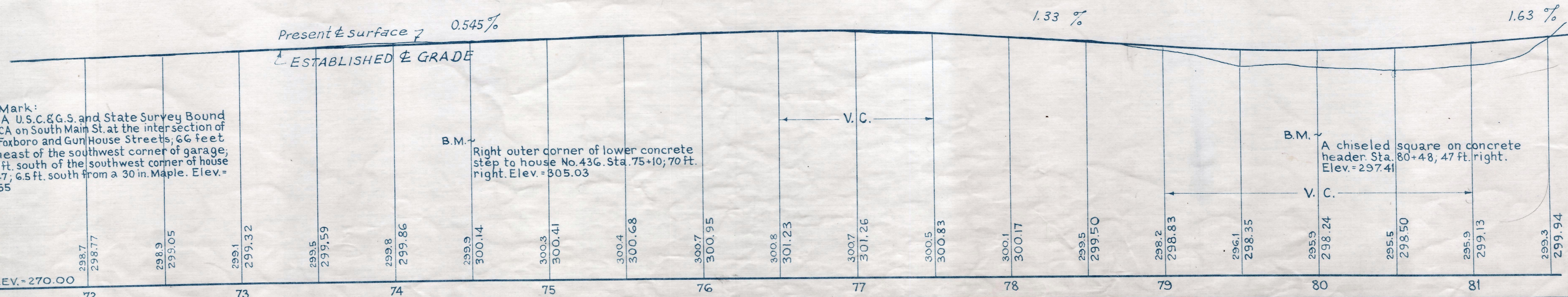
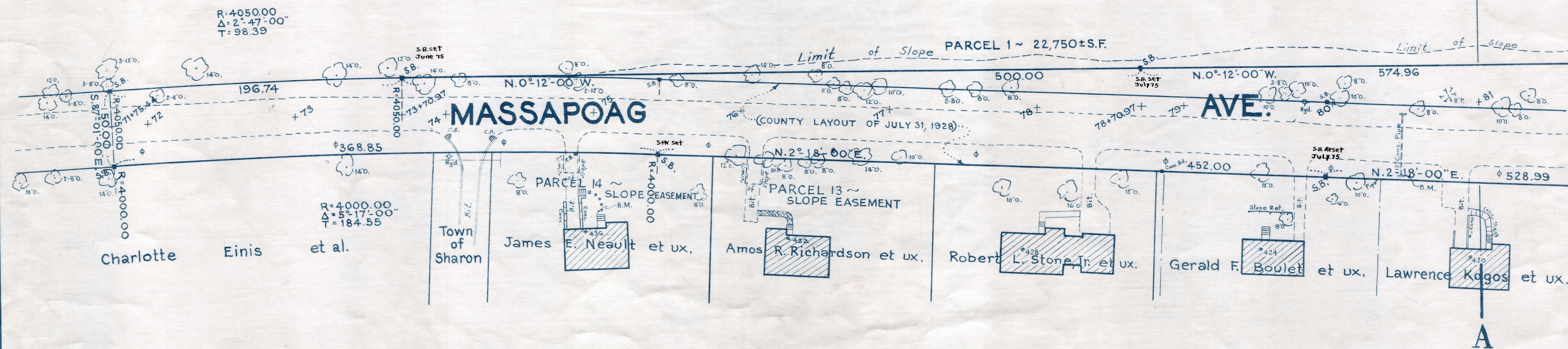
from
A POINT 1400 FEET SOUTHERLY OF LAKEVIEW ST. TO GORWIN DRIVE
as made by the Norfolk County Commissioners
by Return dated July 11, 1967
Horizontal Scale: 1 inch = 40 feet.
Vertical Scale: 1 inch = 8 feet.

Wallace S. Carson, County Engineer

James Gallus CHAIRMAN



Massachusetts Knights of Pythias Kiddie Kamp Corporation



Bench Mark:
A U.S.C. & G.S. and State Survey Bound No. 11CA on South Main St. at the intersection of East Foxboro and Gun House Streets; 66 feet southeast of the southwest corner of garage; 100.2 ft. south of the southwest corner of house No. 247; 6.5 ft. south from a 30 in. Maple. Elev. = 273.55

B.M. - Right outer corner of lower concrete step to house No. 436. Sta. 75+10; 70 ft. right. Elev. = 305.03

B.M. - A chiseled square on concrete header. Sta. 80+48, 47 ft. right. Elev. = 297.41