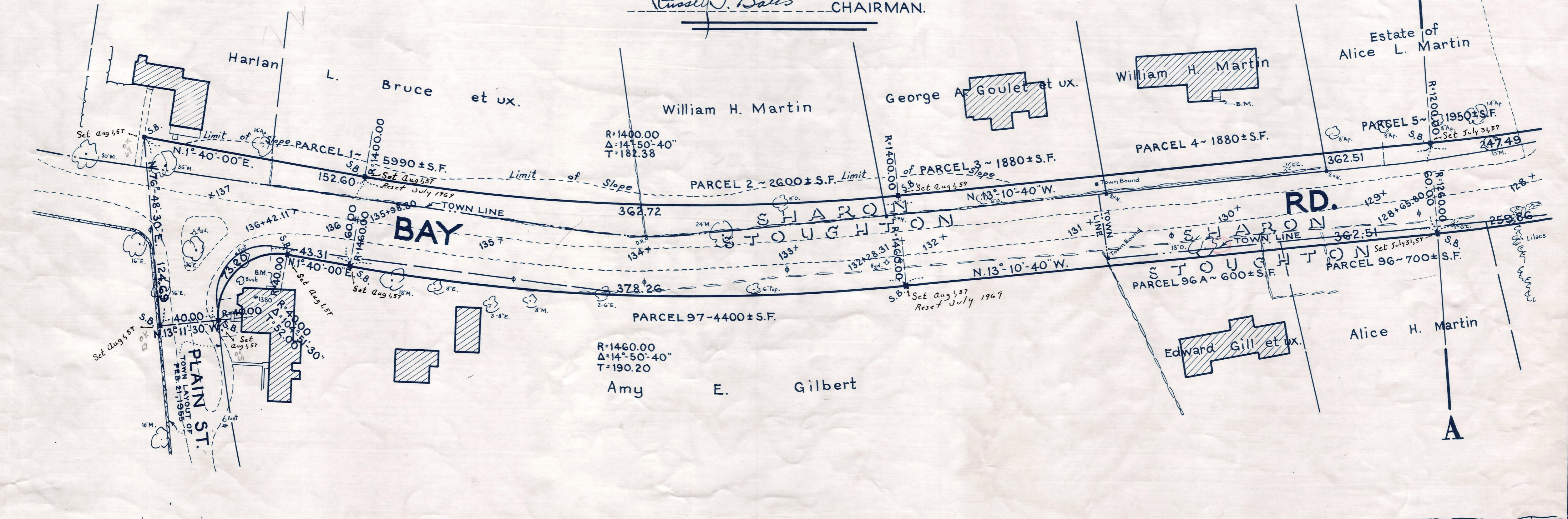
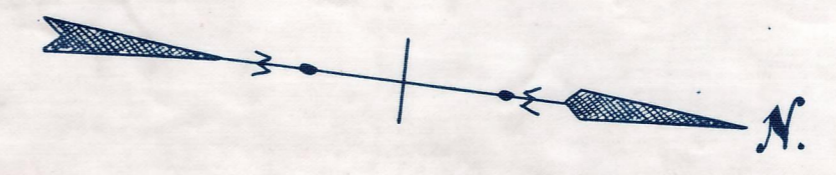


Plan and Profile
showing the Relocation and Widening
of a portion of
BAY ROAD, STOUGHTON

between
PLAIN STREET AND NORTH MAIN STREET
as made by the Norfolk County Commissioners
by Return dated July 17, 1956
Horizontal Scale: 1 inch = 40 feet.
Vertical Scale: 1 inch = 8 feet.
Wallace S. Carson County Engineer.
W. S. Carson CHAIRMAN.



1.67%		ESTABLISHED & GRADE 2		0.68%																																				
		Present & Surface																																						
ELEV. = 190.00	220.90	221.18	221.53	222.01	222.51	222.85	222.74	223.68	223.12	224.02	223.43	224.36	223.84	224.70	224.4	225.04	225.14	225.38	225.68	225.72	225.95	226.06	226.20	226.40	226.54	226.74	226.86	227.08	227.27	227.42	227.76	227.76	228.04	228.10	228.34	228.44	228.60	228.78	228.96	229.12
	137		136		135		134		133		132		131		130		129		128																					

B.M. ~
Left outer corner of granite
step to house. Sta. 136+48; 52
ft. left. Elev. = 223.50

B.M. ~
Right outer corner of lower
concrete step to house. Sta.
130+05; 71 ft. right. Elev. = 228.45

CRIF. ORDER RELOCATION BK. 3505 P. 23 9-13-56
TKG. BK. 3494 P. 513, PL. BK. 202 PLS. 1026-1040 INCL. 8-8-56
See Acts & Resolves of 1957, Ch. 279 for T.L. Change

Date of Entry Aug. 23, 1956.

Stoughton Copy