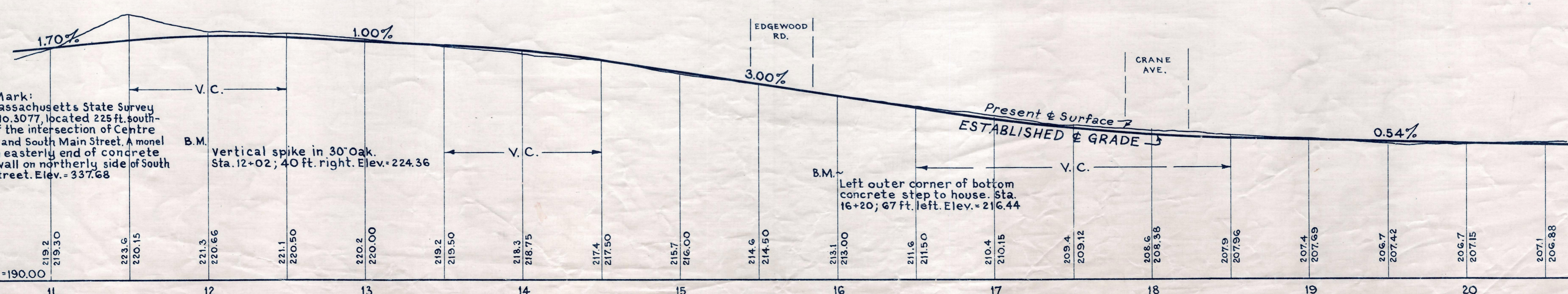
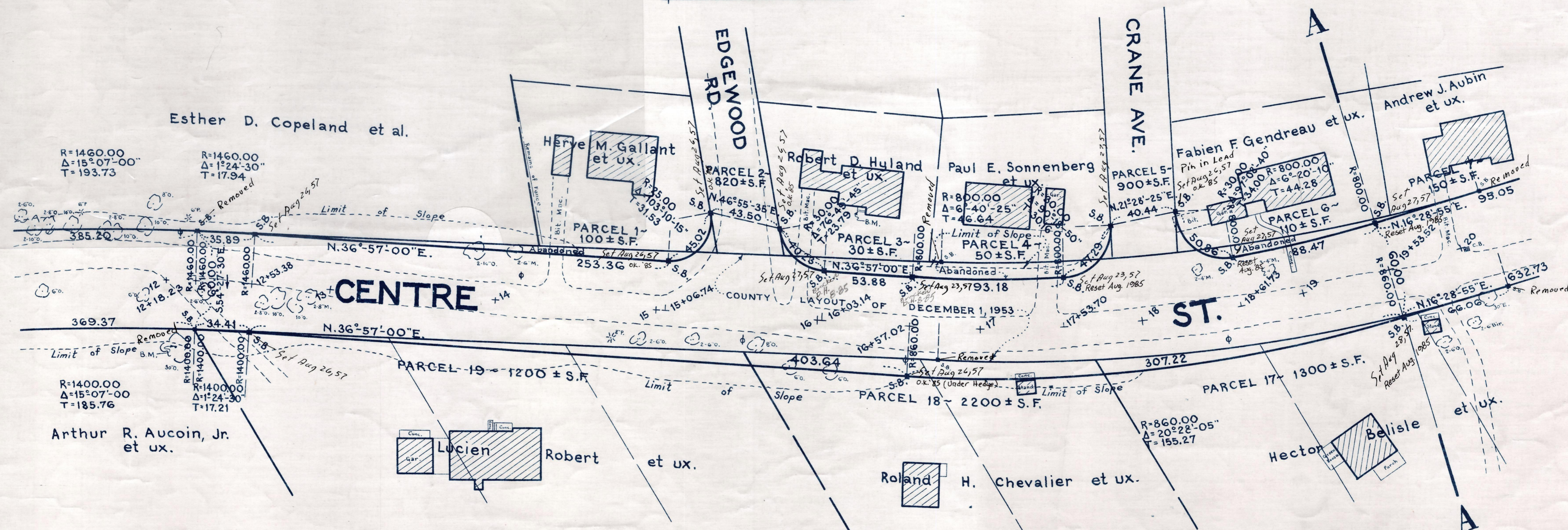
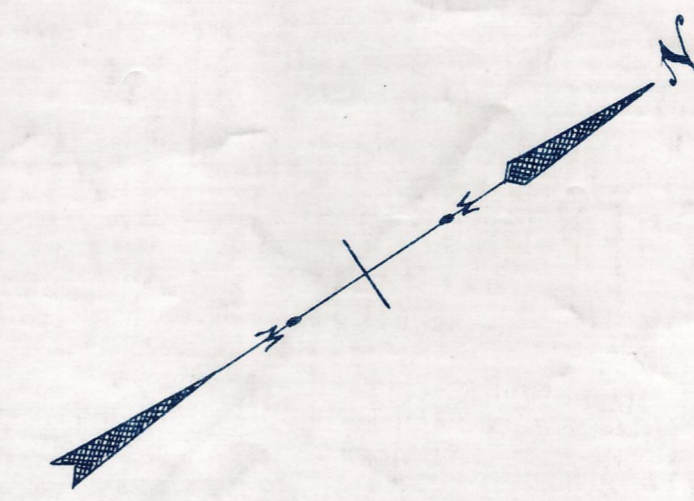


Plan and Profile  
showing the Relocation and Widening  
of a portion of  
**CENTRE STREET, BELLINGHAM**  
between

STATION 12+18.23 AND STATION 26+40.26  
as made by the Norfolk County Commissioners  
by Return dated November 8, 1955  
Horizontal Scale: 1 inch = 40 feet.  
Vertical Scale: 1 inch = 8 feet.

Wallace S. Carson, County Engineer.  
*Russell J. Batis* CHAIRMAN.



Bench Mark:  
A Massachusetts State Survey  
T.B.M. No. 3077, located 225 ft. south-  
west of the intersection of Centre  
Street and South Main Street. A monel  
rivet in easterly end of concrete  
head wall on northerly side of South  
Main Street. Elev. = 337.68