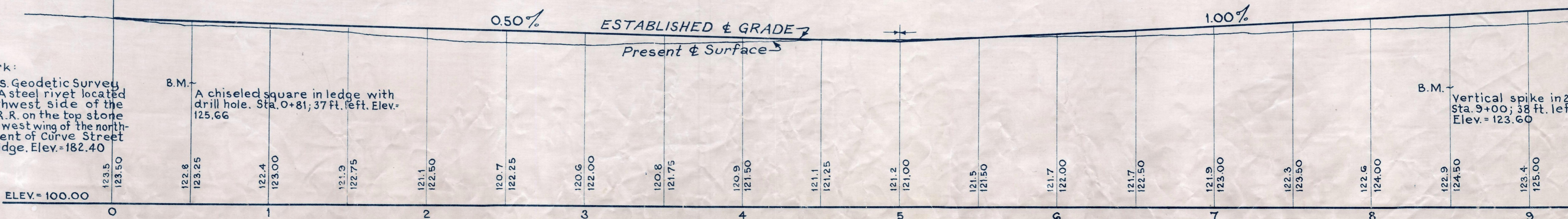
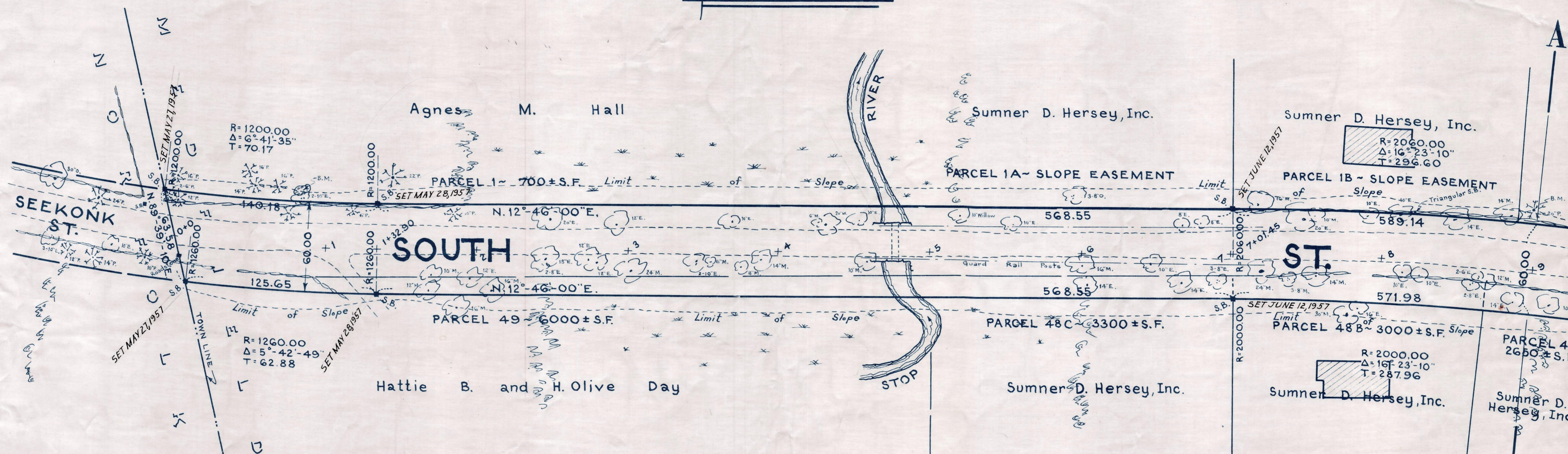
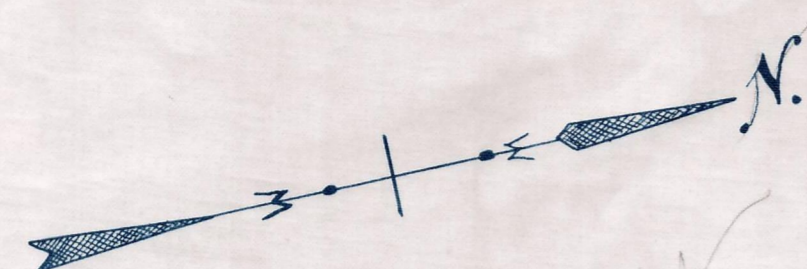


Plan and Profile  
showing the Relocation and Widening  
of a portion of  
**SOUTH STREET, MEDFIELD**

between  
**HIGH STREET AND THE NORFOLK TOWN LINE**  
as made by the Norfolk County Commissioners  
by Return dated December 6, 1955  
Horizontal Scale: 1inch=40 feet.  
Vertical Scale: 1inch=8 feet.  
Wallace S. Carson, County Engineer.  
*Wassell J. Bates* CHAIRMAN.



Bench Mark:  
Mass. Geodetic Survey  
T.B.M. #2281. A steel rivet located  
on the southwest side of the  
N.Y., N.H. & H.R.R. on the top stone  
of the southwest wing of the north-  
west abutment of Curve Street  
overpass bridge. Elev. = 182.40

B.M. -  
A chiseled square in ledge with  
drill hole. Sta. 0+81; 37 ft. left. Elev. =  
125.66

B.M. -  
Vertical spike in 20" Pine  
Sta. 9+00; 38 ft. left.  
Elev. = 123.60