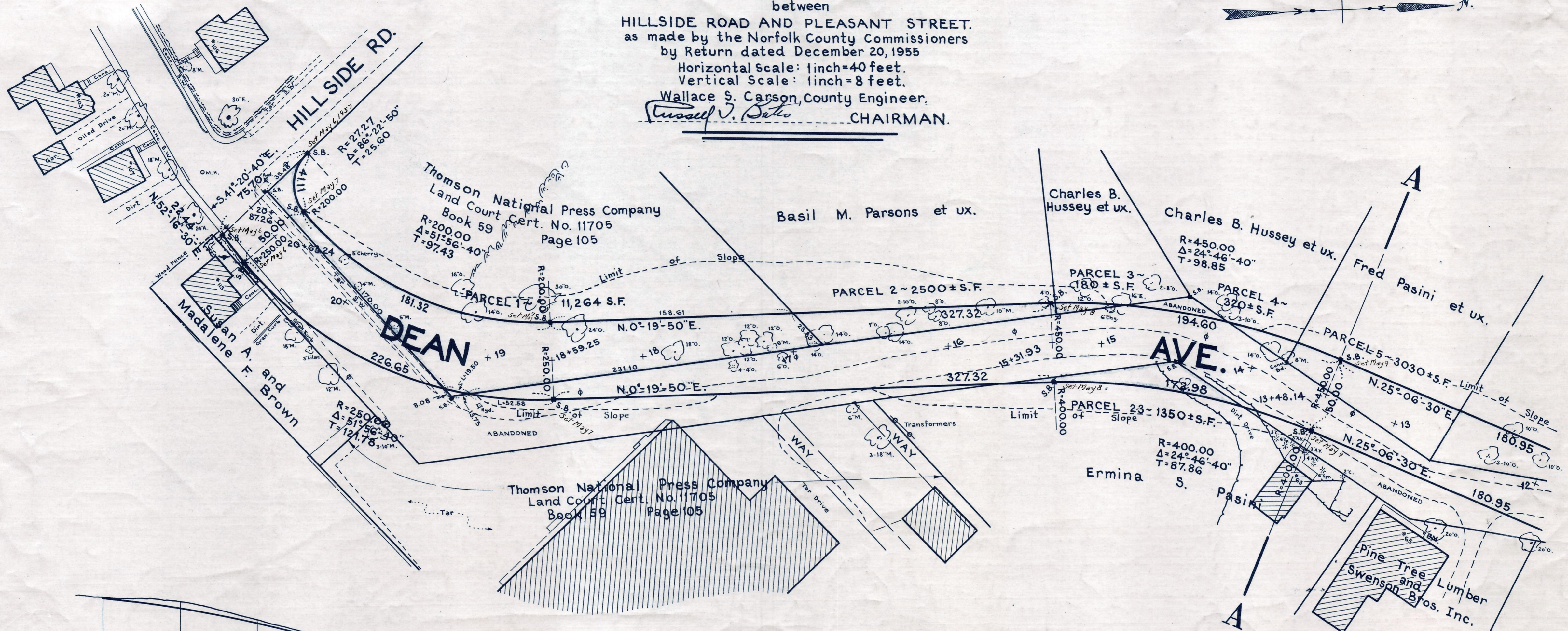
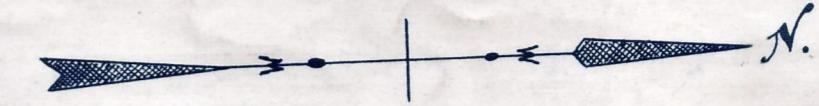


Plan and Profile  
showing the Relocation and Widening  
of a portion of  
**DEAN AVENUE, FRANKLIN**

between  
HILLSIDE ROAD AND PLEASANT STREET.  
as made by the Norfolk County Commissioners  
by Return dated December 20, 1955

Horizontal Scale: 1 inch = 40 feet.  
Vertical Scale: 1 inch = 8 feet.

Wallace S. Carson, County Engineer.  
*Russell V. Bates* CHAIRMAN.



**Bench Mark:**

A U.S.C. & G. and State Survey bound No. 17CV located on the east side of two water standpipes; 391 ft. east from the intersection of Crescent St. and Hillside Rd.; 285 ft. south from the center line of Fales St.; 40.2 ft. southeast of the north standpipe and 47.1 ft. northeast of the south standpipe. Elev. = 375.13

