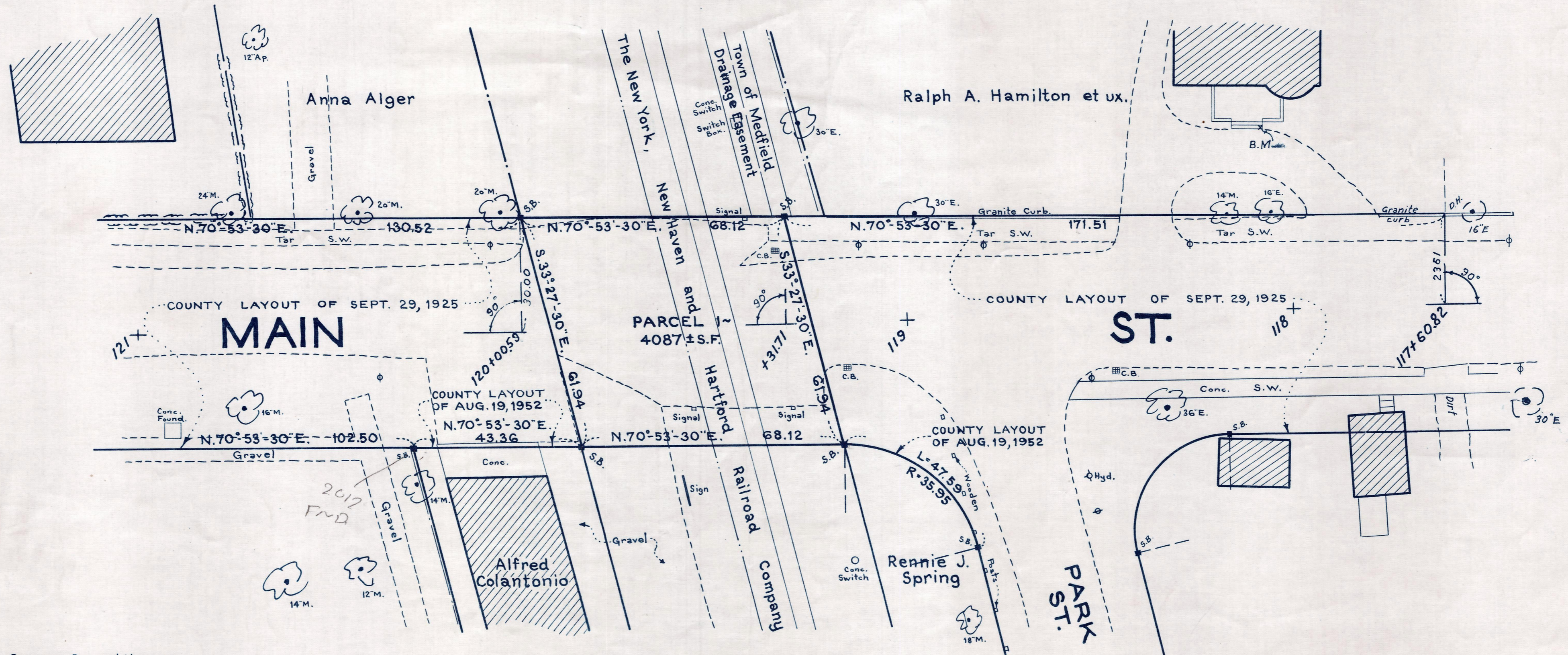
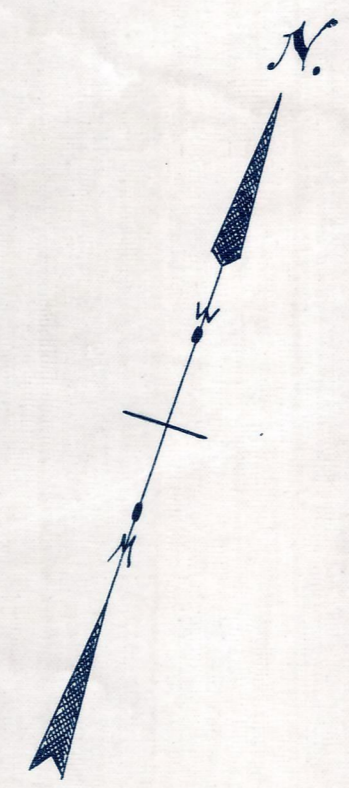


Plan and Profile  
showing Alteration of Railroad Crossing  
on  
**MAIN STREET, MEDFIELD**

as made by the Norfolk County Commissioners  
by Decision dated July 26, 1955  
Horizontal Scale: 1 inch = 20 feet. Vertical Scale: 1 inch = 4 feet.

Wallace S. Carson, County Engineer.  
*Wallace S. Carson* CHAIRMAN.



Bench Mark:~  
A.U.S.C.&G. and State Survey Bound No. 35R  
situated on West side of the N.Y. N.H. & H.R.R.  
(Taunton Division); 9.2 feet from the West  
rail; 9.1 feet northeast of wire fence and  
1338 feet Southeast of Main St.  
Elev. = 171.20

