

Plan and Profile
showing the Relocation and Widening
of a portion of

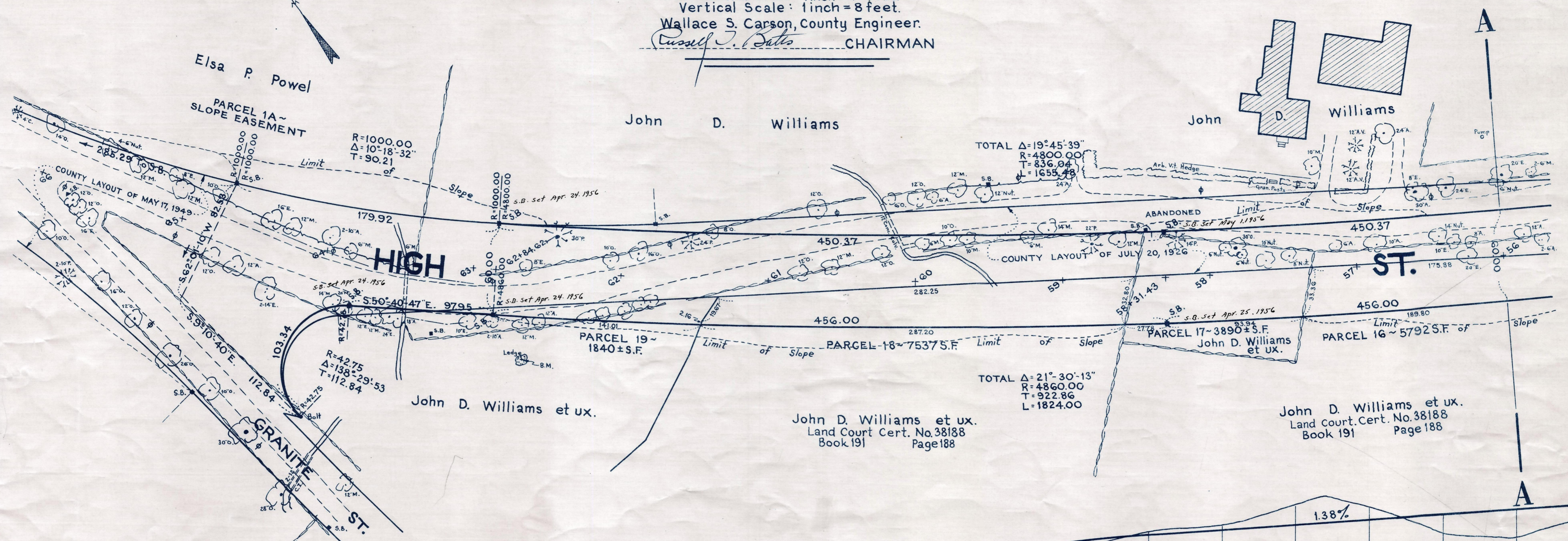
HIGH STREET, MEDFIELD

between
GRANITE ST. AND THE WALPOLE TOWN LINE
as made by the Norfolk County Commissioners
by Return dated January 18, 1955.

Horizontal Scale: 1 inch = 40 feet.
Vertical Scale: 1 inch = 8 feet.

Wallace S. Carson, County Engineer.

Russell J. Bates CHAIRMAN



Bench Mark:
Mass. Geodetic Survey T.B.M.
#2281. A steel rivet located on the
southwest side of the N.Y., N.H. & H.
R.R. on the top stone of the south-
west wing of the northwest abut-
ment of Curve Street overpass bridge.
Elev. = 182.40

