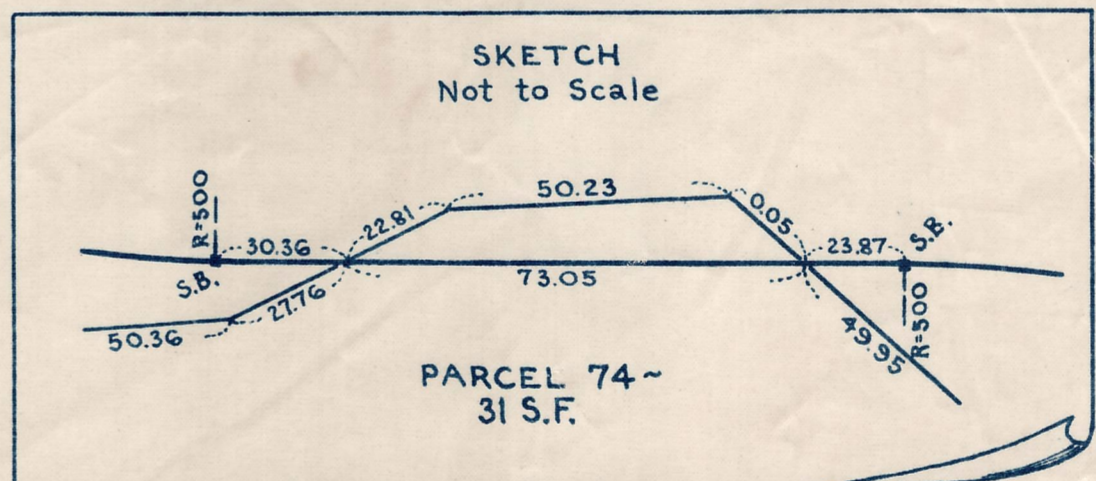


Patrick F. Mullane
Land Court Cent. No.28867
Page 67



Station	Present & Surface	Established & Grade
0	174.9	174.9
1	173.5	174.7
2	172.6	173.30
3	171.6	172.57
4	170.2	171.11
5	168.2	169.65
6	166.2	167.46
7	165.0	166.00
8	164.1	164.24
9	162.2	163.36
9+13.62	162.0	162.48

B.M. ~
A chiseled square on ledge.
Sta. 3+82; 47 ft. right. Elev. = 172.08