

Plan and Profile
showing the Relocation and Widening
of a portion of

PLEASANT STREET, STOUGHTON

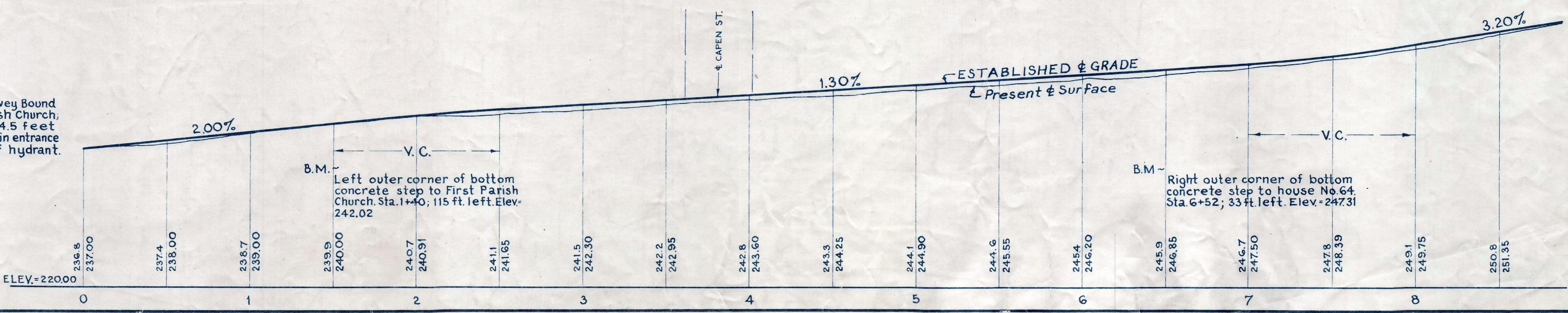
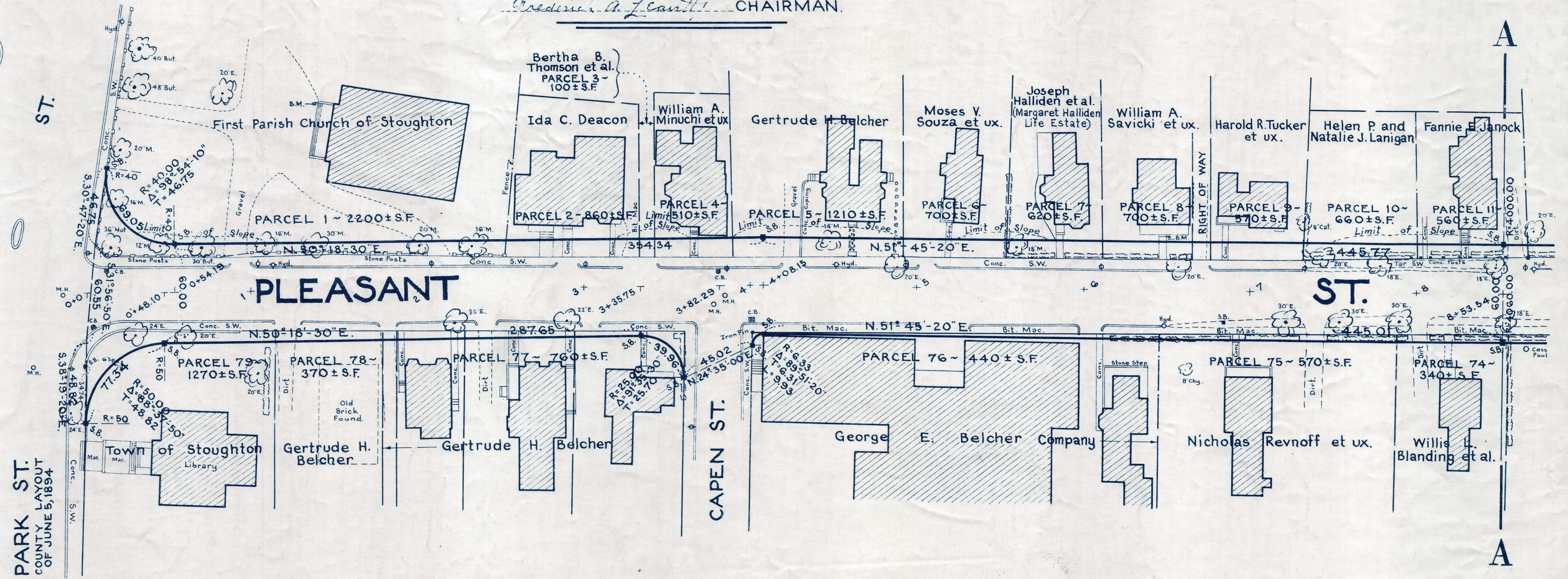
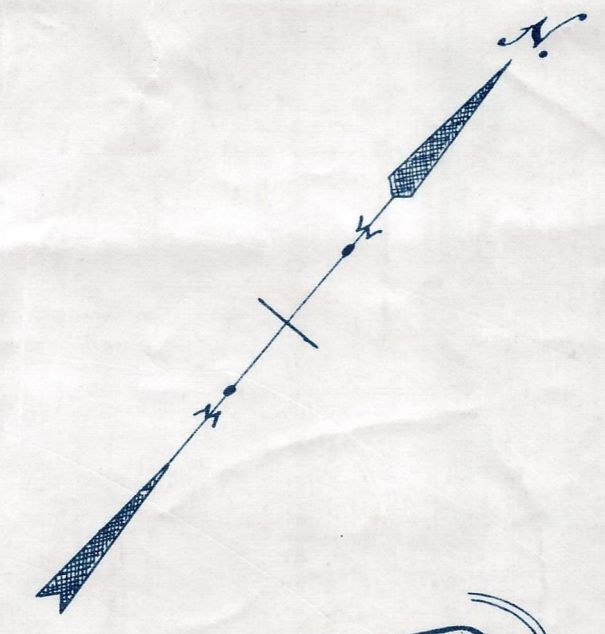
between
WASHINGTON AND PARK STS. AND CENTRAL ST.

as made by the Norfolk County Commissioners
by Return dated September 14, 1954

Horizontal Scale: 1 inch = 40 feet.
Vertical Scale: 1 inch = 8 feet.

Wallace S. Carson, County Engineer.
Fredrick A. Zearth CHAIRMAN.

*This Layout is
VOID
see Cert. Bk. 3517 Pg. 400*



Bench Mark:
U.S.C. & G.S. and State Survey Bound
No. M138Q in front of First Parish Church,
9.8 feet from edge of curb; 24.5 feet
south of edge of walk to main entrance
to church; 78.9 feet south of hydrant.
Elev. = 235.68

B.M. -
Left outer corner of bottom
concrete step to First Parish
Church. Sta. 1+40; 115 ft. left. Elev.
242.02

B.M. -
Right outer corner of bottom
concrete step to house No. 64.
Sta. 6+52; 33 ft. left. Elev. - 247.31

This Layout Void Due to No Entry
see Cert. Recorded Bk. 3517 Pg. 400