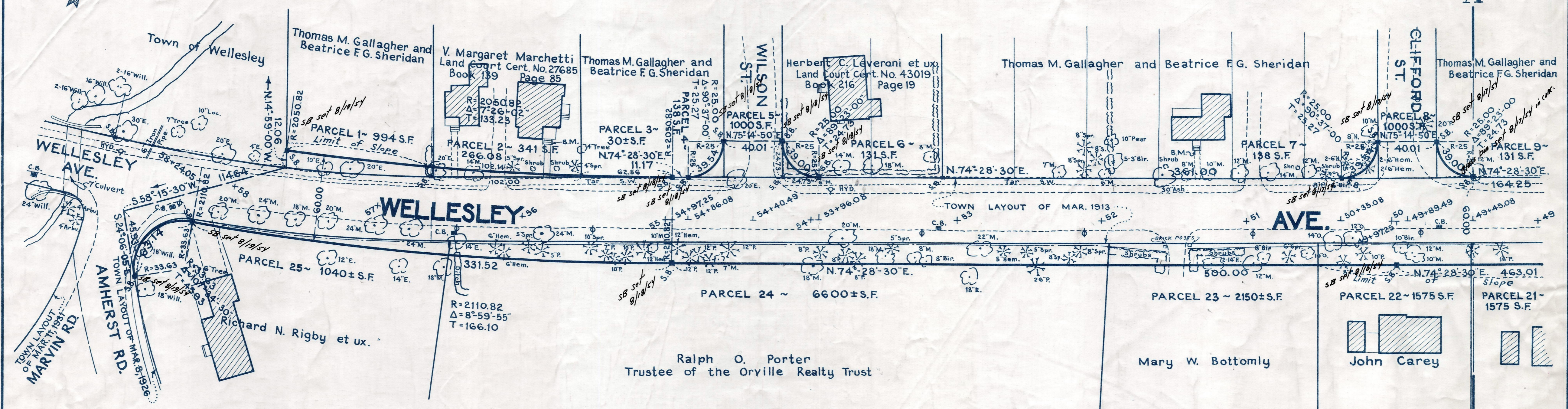
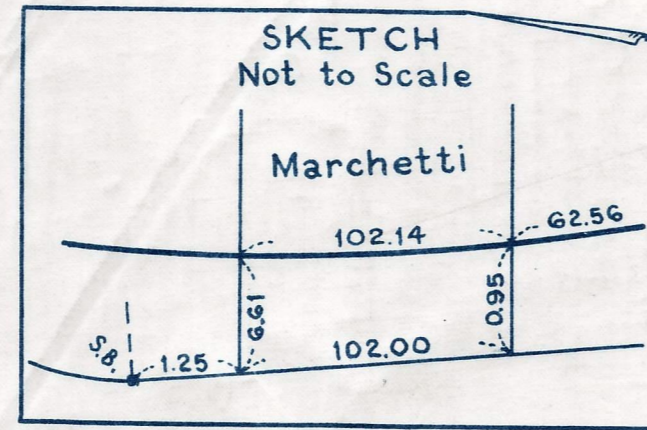


Plan and Profile
showing the Relocation and Widening
of a Portion of

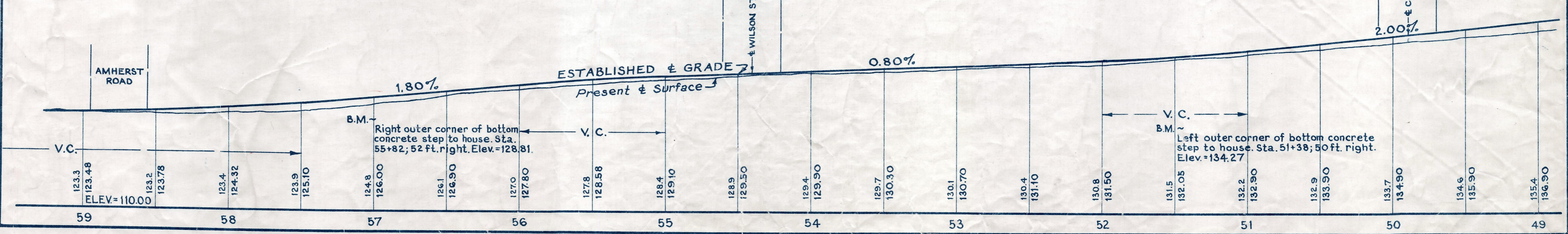
WELLESLEY AVENUE, WELLESLEY

between
AMHERST ROAD AND GREAT PLAIN AVE.
as made by the Norfolk County Commissioners
by Return dated June 30, 1953
Horizontal Scale: 1 inch = 40 feet.
Vertical Scale: 1 inch = 8 feet.
Wallace S. Carson, County Engineer.

Frederick A. Leavitt, CHAIRMAN



Bench Mark:
A Mass. Geodetic bound No. 28Z located on the south side of Route #135 (Wellesley Ave); 38 feet northeast of the northeast corner of house #15 Wellesley Ave.; 27 feet west of the center line of Dexter Rd. and 17.4 feet south of the center line of Wellesley Ave. Elev. = 132.79



CRF. ORDER RELOCATION BK. 3211 PG. 180 OCT. 21, 1953
TK6. BK. 3184 PG. 52A, PL. BK. 179, PLS. 960 & 961 REC. JULY 14, 1953

Date of Entry October 9, 1953