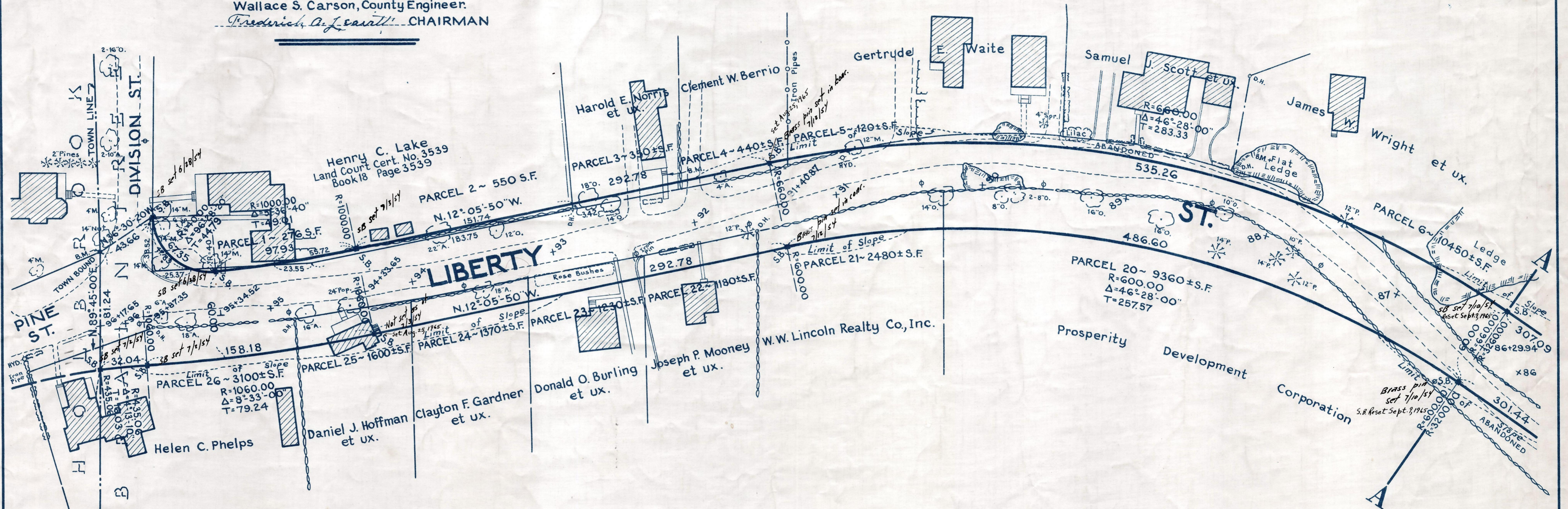


Plan and Profile
showing the Relocation and Widening
of a Portion of
LIBERTY STREET, BRAINTREE

from
THE HOLBROOK TOWN LINE TO LIBERTY PARK AVE.
as made by the Norfolk County Commissioners
by Return dated June 9, 1953.
Horizontal Scale: 1 inch = 40 feet.
Vertical Scale: 1 inch = 8 feet.
Wallace S. Carson, County Engineer.

Frederick A. J. Savitt CHAIRMAN



Bench Mark:
Mass. Geodetic Survey T.B.M. No. 244.
A chiseled square on the northwest
corner of the bottom step of the
northwest wing wall of the N.Y., N.H.
& H.R.R. bridge at Liberty Street. Elev.
= 140.40

