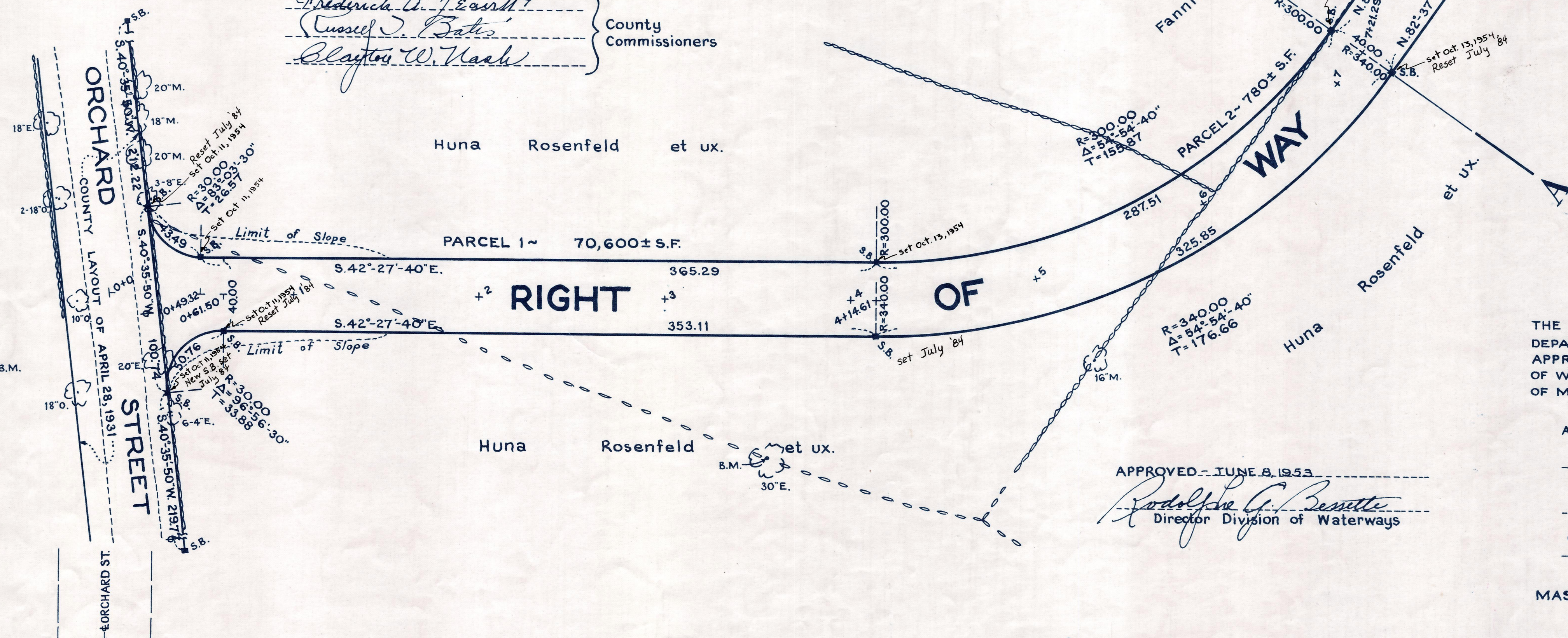
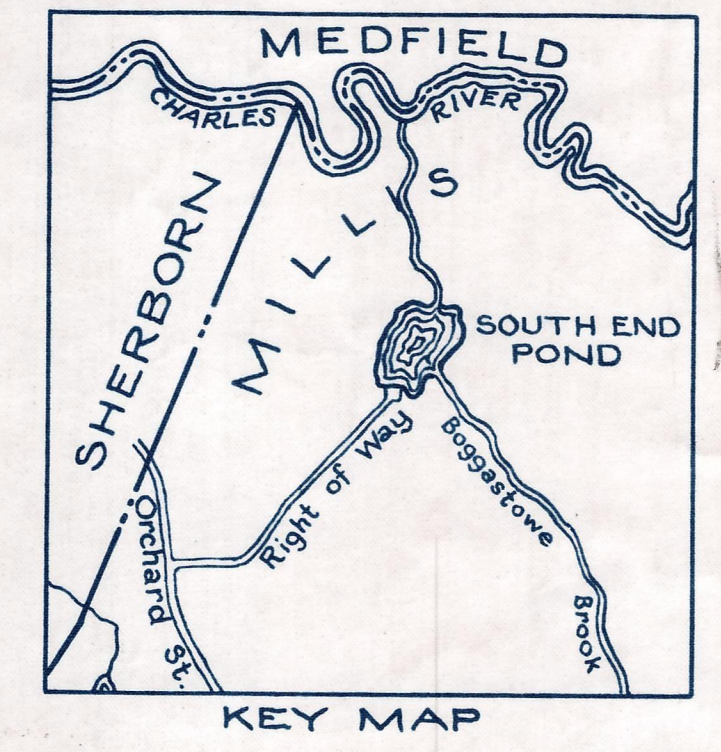


Plan and Profile showing the  
**RIGHT OF WAY TO  
SOUTH END POND  
MILLIS, MASS.**

as laid out by the Norfolk County Commissioners  
as authorized and directed by  
Chapter 309 - Acts of 1952  
Horizontal Scale: 1 inch = 40 feet.  
Vertical Scale: 1 inch = 8 feet.  
Sept. 22, 1953  
Wallace S. Carson, County Engineer.

*Fredrick A. Leavitt*  
*Russell J. Bates*  
*Clayton W. Nash* } County Commissioners

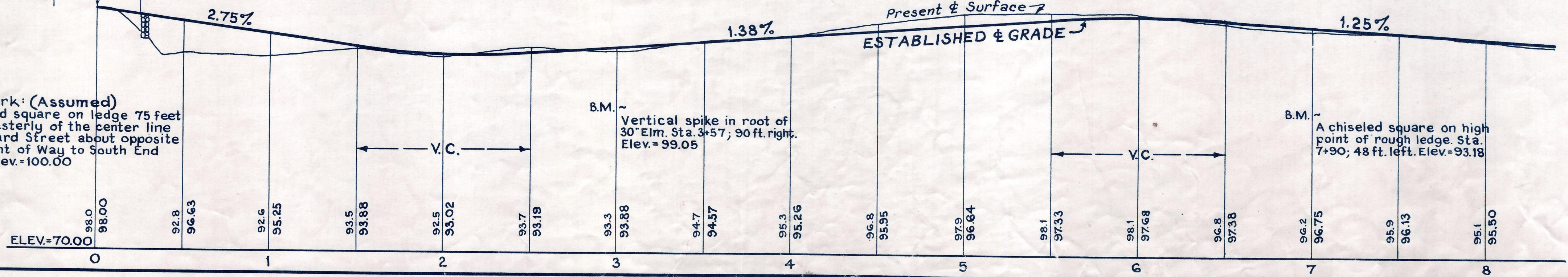


THE COMMISSIONERS OF THE MASSACHUSETTS  
DEPARTMENT OF PUBLIC WORKS HEREBY  
APPROVE OF THE LAYOUT OF THE RIGHT  
OF WAY TO SOUTH END POND IN THE TOWN  
OF MILLIS, MASS. AS SHOWN ON THIS PLAN.

APPROVED - JUNE 8, 1953  
*Rodolfo G. Benette*  
Director Division of Waterways

APPROVED - JUNE 8, 1953  
*John A. Wynn*  
Commissioner  
*Frederick D. Grant*  
Associate Commissioner  
*Steven V. Maturo*  
Associate Commissioner

MASS. DEPARTMENT OF PUBLIC WORKS



Bench Mark: (Assumed)  
A chiseled square on ledge 75 feet  
northwesterly of the center line  
of Orchard Street about opposite  
new Right of Way to South End  
Pond. Elev. = 100.00