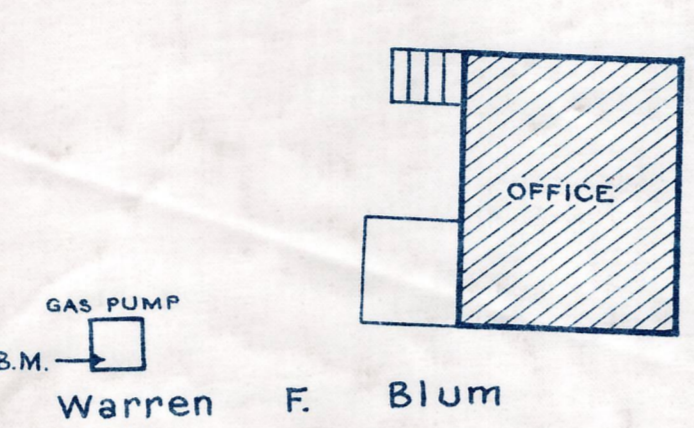
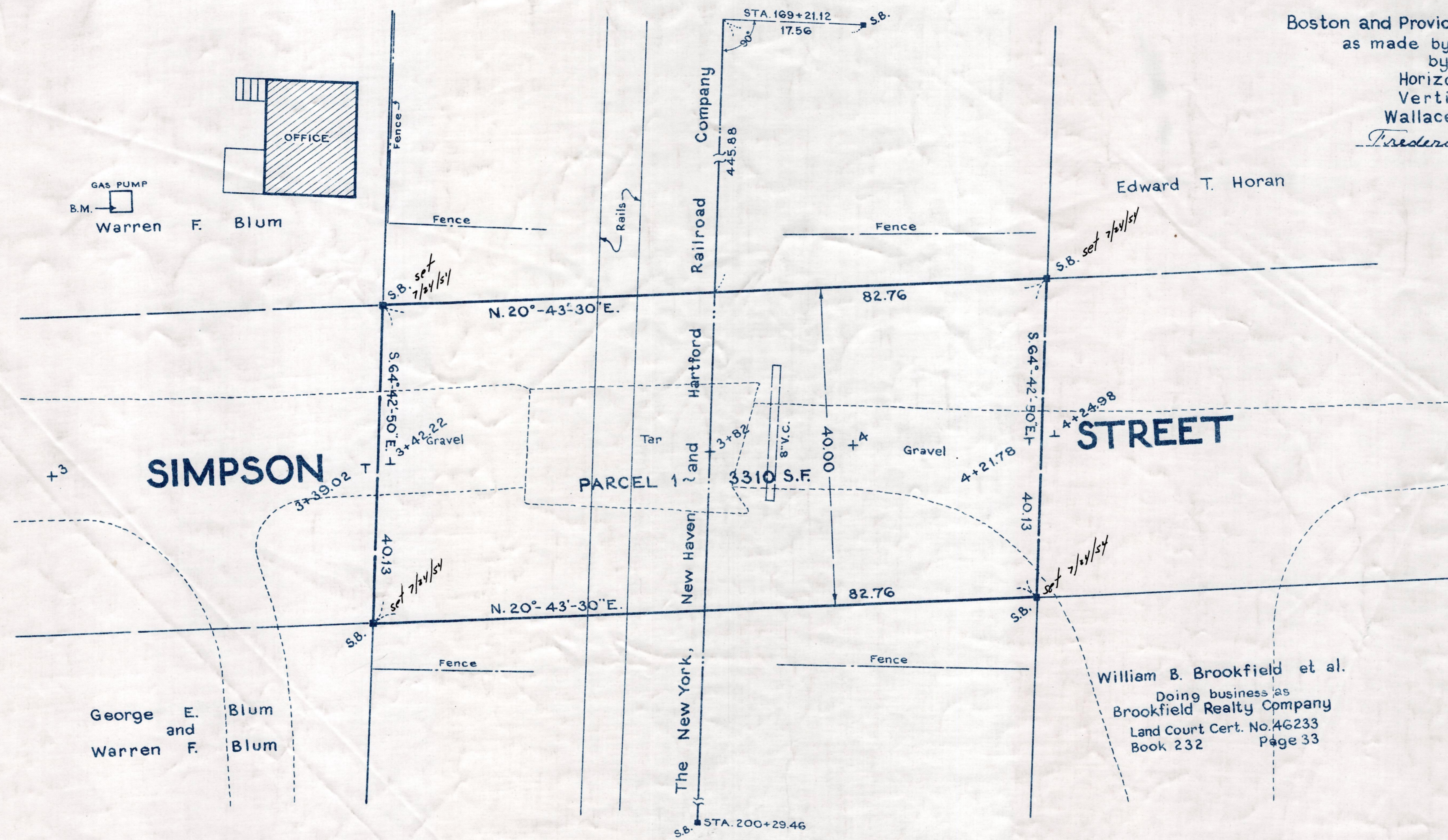
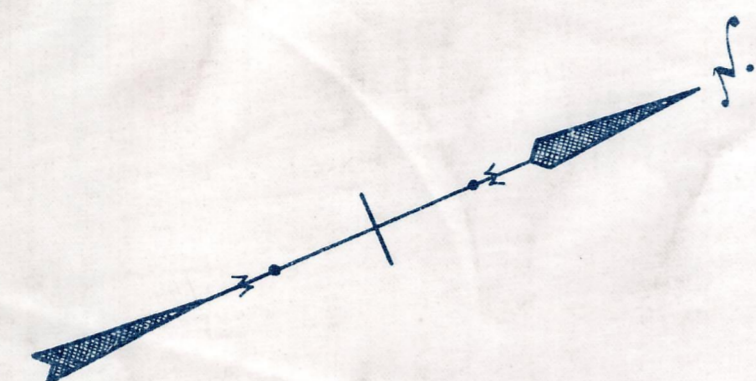


Plan and Profile  
of  
**SIMPSON STREET, STOUGHTON**

Laid out as a Public Way  
across

Boston and Providence Railroad Corp. (The N.Y., N.H. & H.R.R. Co.)  
as made by the Norfolk County Commissioners  
by Return dated June 30, 1953  
Horizontal Scale: 1 inch = 10 feet.  
Vertical Scale: 1 inch = 4 feet.

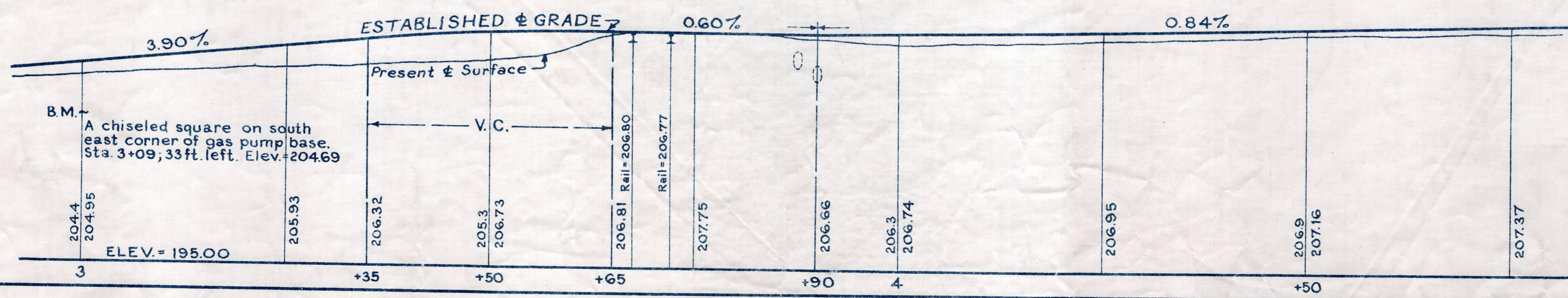
Wallace S. Carson, County Engineer.  
*Frederick A. J. Carver* CHAIRMAN.



George E. Blum  
and  
Warren F. Blum

William B. Brookfield et al.  
Doing business as  
Brookfield Realty Company  
Land Court Cert. No. 46233  
Book 232 Page 33

Bench Mark:  
A Mass. Geod. Survey Bound  
No. 138 M.B. located on the south side  
of Central St. Stoughton. 20.5 feet from  
the center line, 65 feet southeast of  
the southwest corner and 61 feet south  
of the southeast corner of house No. 1121;  
71.6 feet southwest of stone post at  
corner of cemetery lot and 1225 feet  
west of Washington St. Elev. = 229.22



B.M. ~ Vertical spike in crotch of  
3-12\" Elms. Sta. 5+13; 31 ft. right.  
Elev. = 209.16