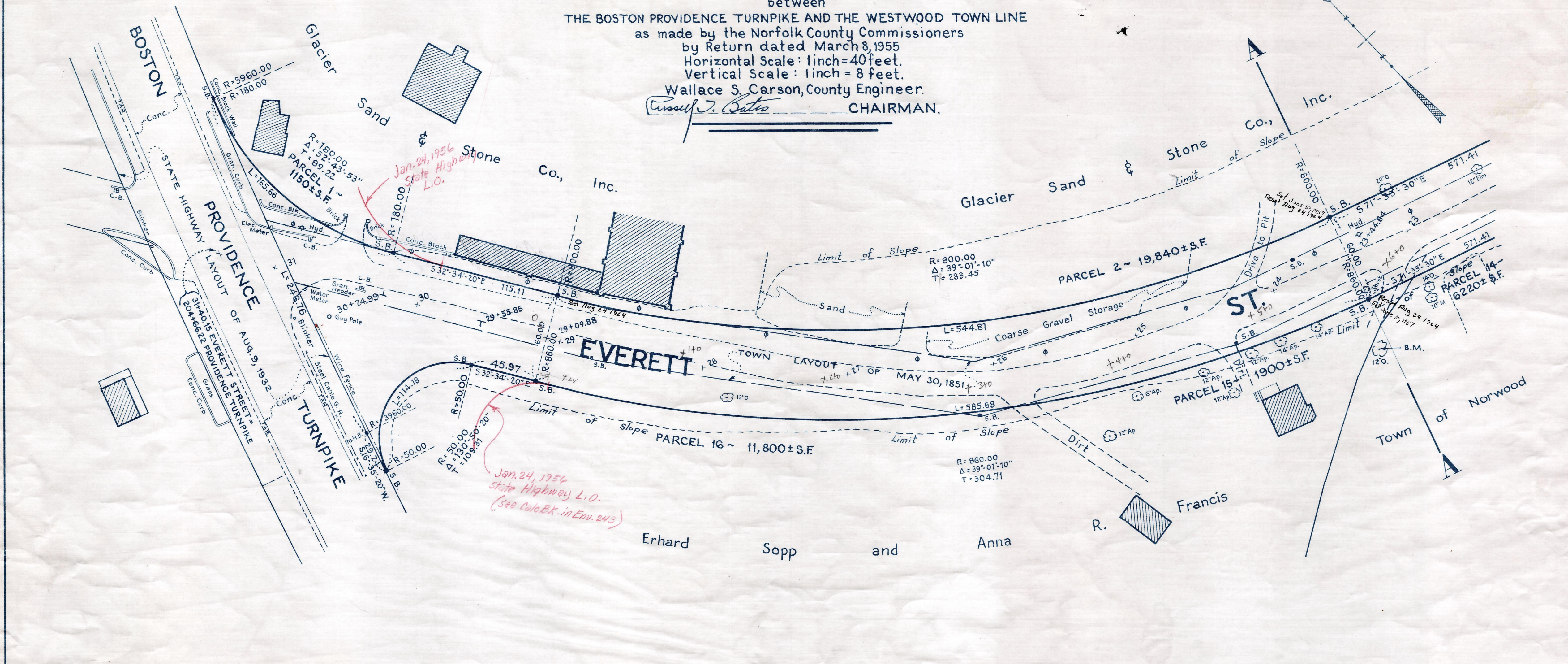
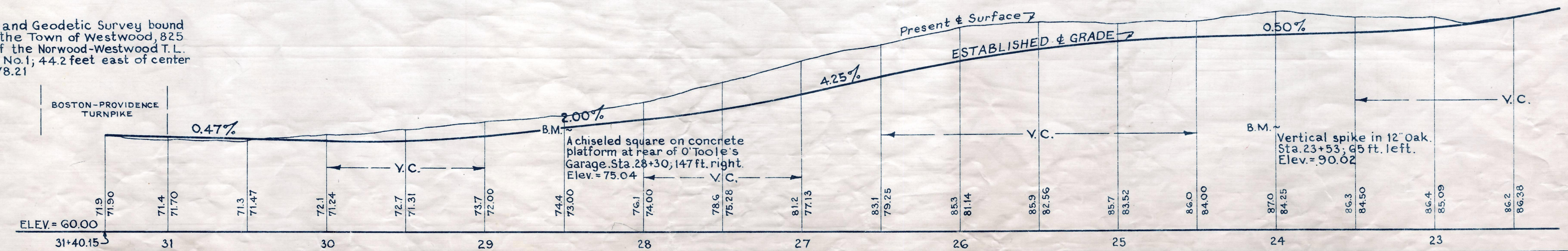


Plan and Profile showing the Relocation and Widening of a portion of EVERETT STREET, NORWOOD

between
THE BOSTON PROVIDENCE TURNPIKE AND THE WESTWOOD TOWN LINE
as made by the Norfolk County Commissioners
by Return dated March 8, 1955
Horizontal Scale: 1 inch = 40 feet.
Vertical Scale: 1 inch = 8 feet.
Wallace S. Carson, County Engineer.
Russell J. Bates CHAIRMAN.



Bench Mark:
A U.S. Coast and Geodetic Survey bound No. M1BF in the Town of Westwood, 825 feet north of the Norwood-Westwood T.L. on U.S. Route No. 1; 44.2 feet east of center line. Elev. = 78.21



Date of Entry: Sept. 15, 1956