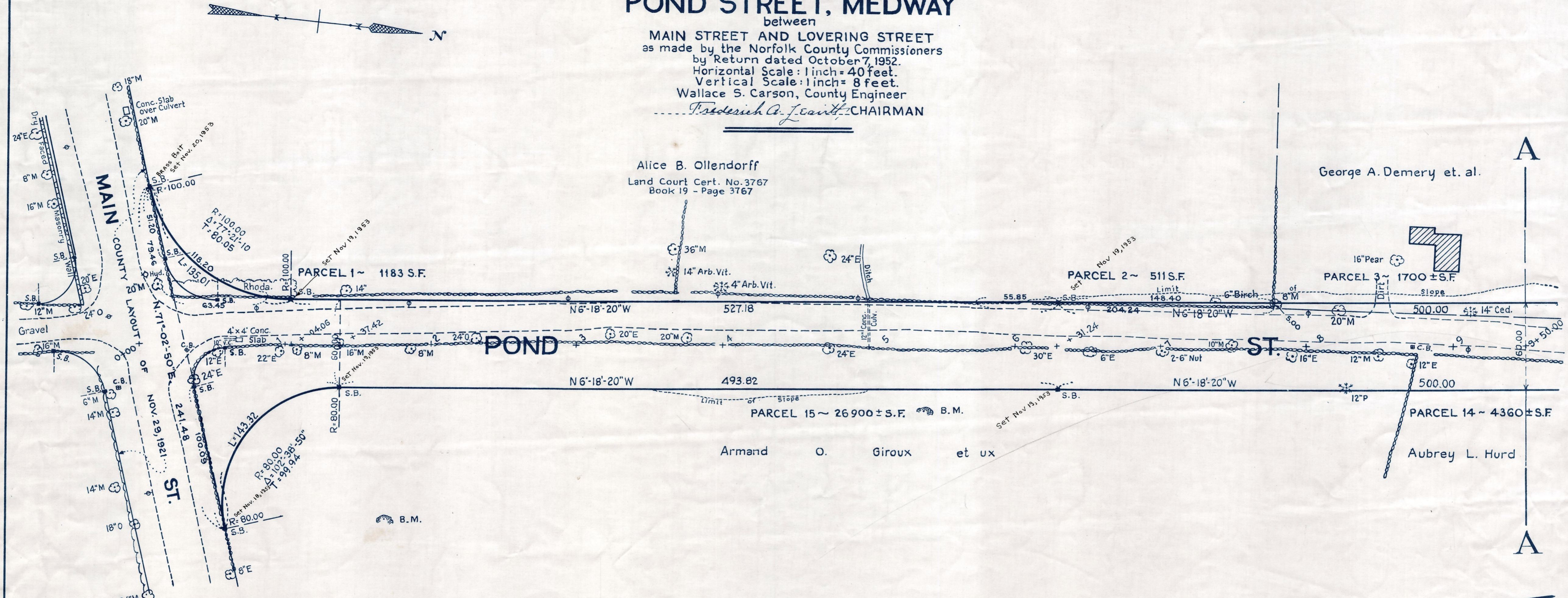


Plan and Profile
Showing the Relocation and Widening
of
POND STREET, MEDWAY

between
MAIN STREET AND LOVERING STREET
as made by the Norfolk County Commissioners
by Return dated October 7, 1952.
Horizontal Scale: 1 inch = 40 feet.
Vertical Scale: 1 inch = 8 feet.
Wallace S. Carson, County Engineer
Frederick A. J. Smith, CHAIRMAN



Bench Mark:
A U.S.C. & G.S. and State Survey bound
No. 521 located in West Medway, 215 ft. north west of
center line of Main St., 70 ft. north east of Slocomb
Place, 57.4 ft. south east of south corner of Coombs
Store, 5.1 ft. south of center of Hydrant. Elev. = 253.46

