

Plan and Profile
Showing the Relocation and Widening
of
EDGE HILL ROAD, SHARON
(FORMERLY VIADUCT STREET)

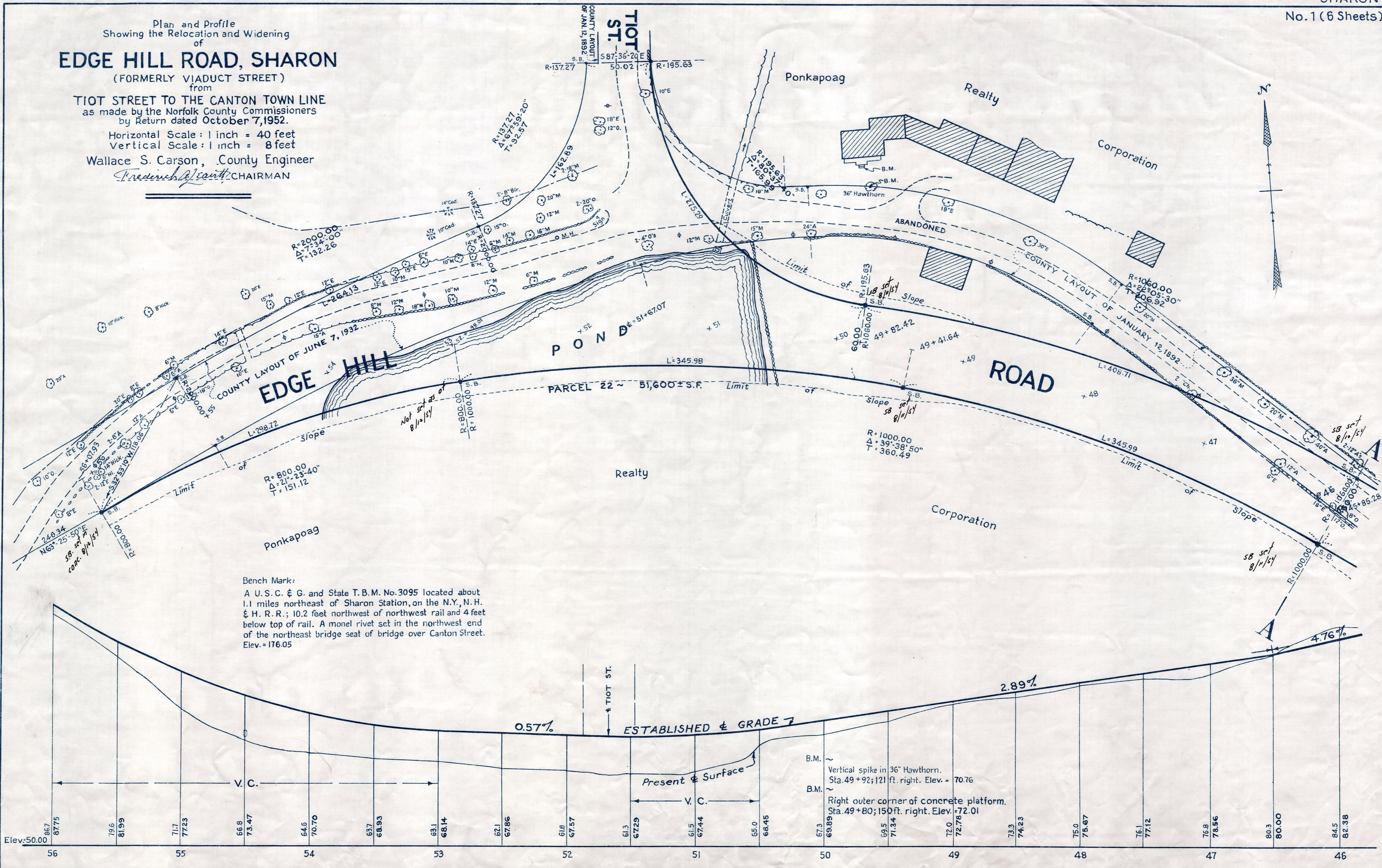
from
TIOT STREET TO THE CANTON TOWN LINE
as made by the Norfolk County Commissioners
by Return dated October 7, 1952.

Horizontal Scale: 1 inch = 40 feet

Vertical Scale: 1 inch = 8 feet

Wallace S. Carson, County Engineer

Frederick J. Smith CHAIRMAN



Bench Mark:
A U. S. C. & G. and State T. B. M. No. 3095 located about 1.1 miles northeast of Sharon Station, on the N. Y., N. H. & H. R. R.; 10.2 feet northwest of northwest rail and 4 feet below top of rail. A monel rivet set in the northwest end of the northeast bridge seat of bridge over Canton Street. Elev. = 176.05