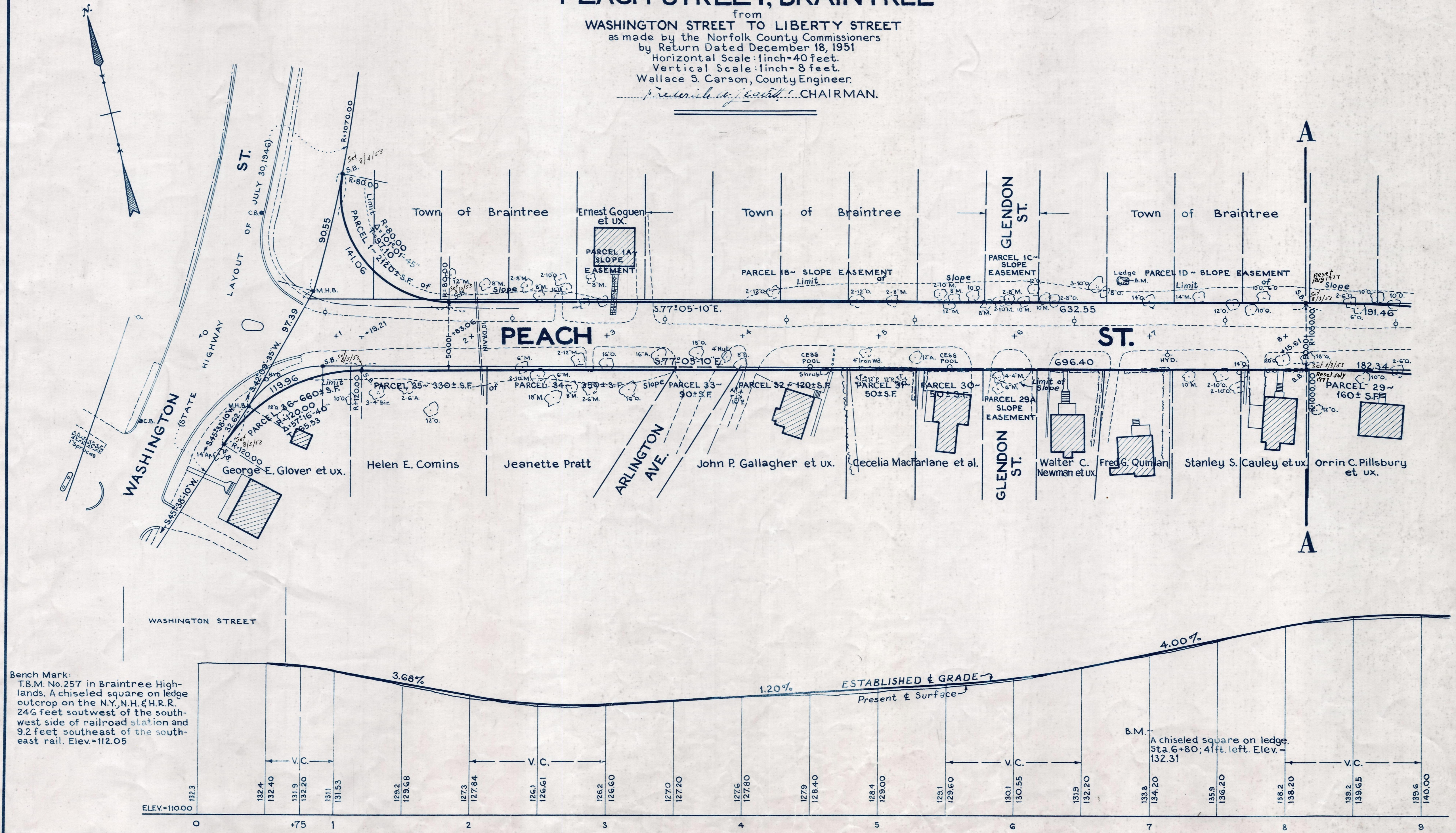


Plan and Profile  
showing the Relocation and Widening  
of  
**PEACH STREET, BRAINTREE**

from  
WASHINGTON STREET TO LIBERTY STREET  
as made by the Norfolk County Commissioners  
by Return Dated December 18, 1951  
Horizontal Scale: 1 inch = 40 feet.  
Vertical Scale: 1 inch = 8 feet.  
Wallace S. Carson, County Engineer.  
*W. S. Carson* CHAIRMAN.



EASE.