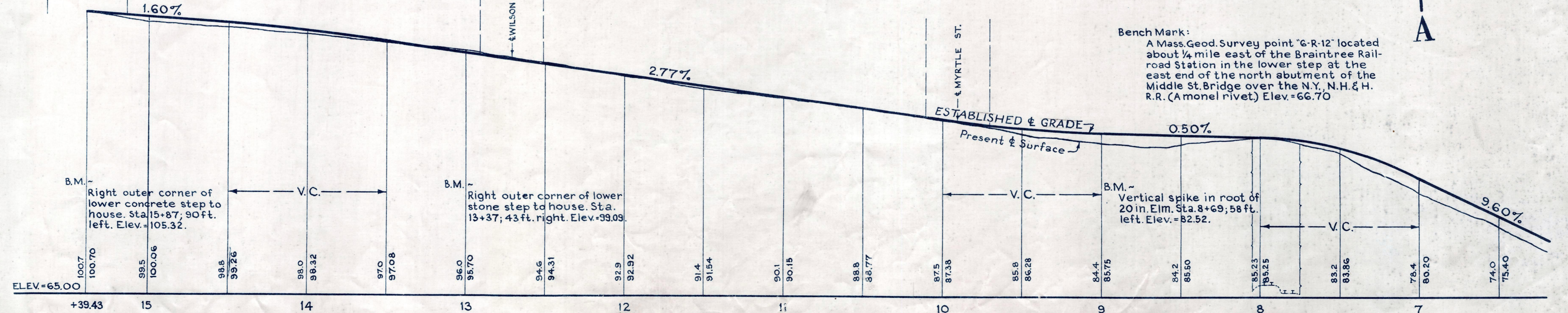
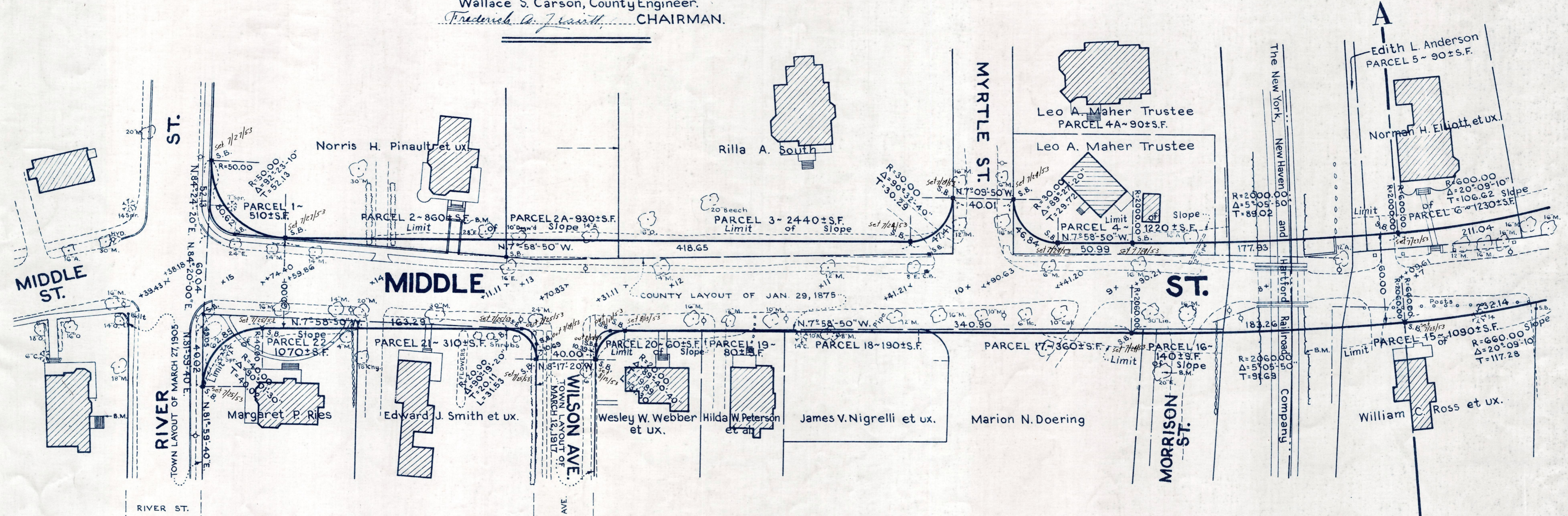
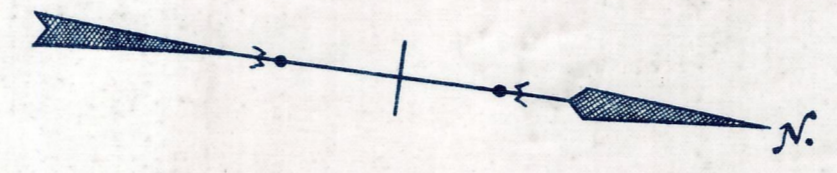


Plan and Profile
showing the Relocation and Widening
of a Portion of
MIDDLE STREET, BRAINTREE
from
RIVER STREET TO ELM STREET
as made by the Norfolk County Commissioners
by Return Dated November 20, 1951.
Horizontal Scale: 1 inch = 40 feet.
Vertical Scale: 1 inch = 8 feet.
Wallace S. Carson, County Engineer.
Frederick A. J. Smith, CHAIRMAN.



Bench Mark:
A Mass. Geod. Survey point "G-R-12" located about 1/4 mile east of the Braintree Railroad Station in the lower step at the east end of the north abutment of the Middle St. Bridge over the N.Y. N.H. & H. R.R. (A monel rivet.) Elev. = 66.70

EASE