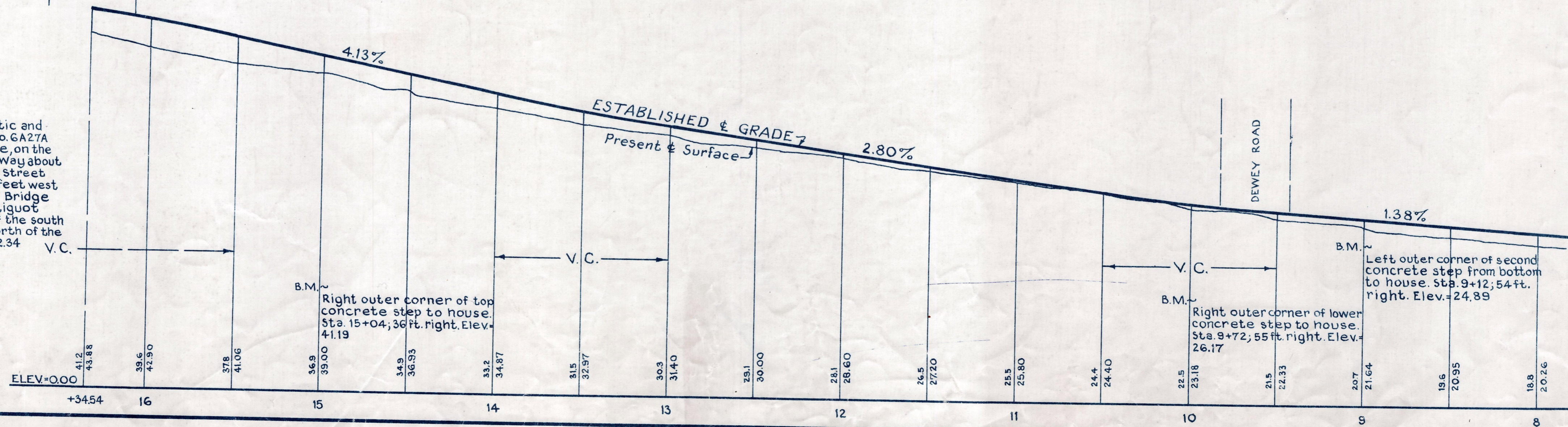
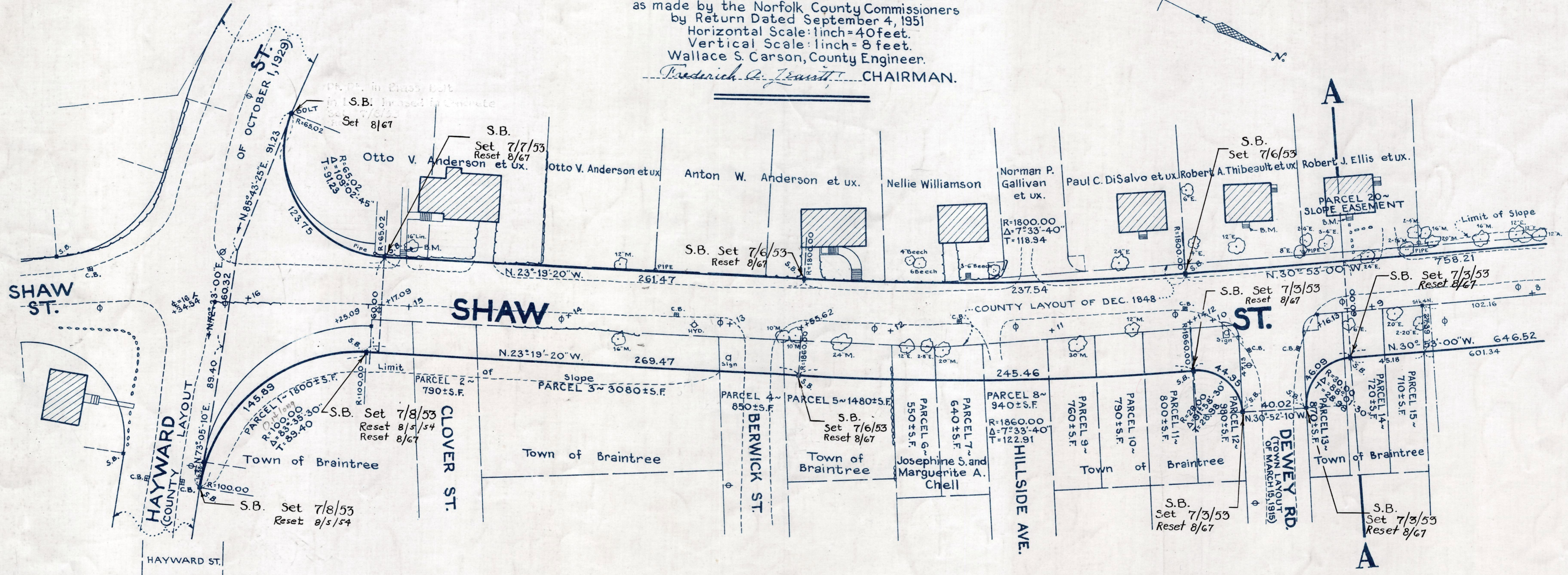
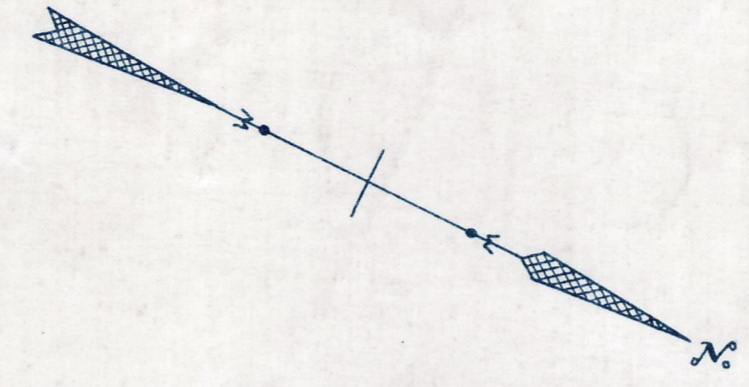


Plan and Profile
showing the Relocation and Widening
of a Portion of
SHAW ST., BRAINTREE
from

HAYWARD ST. TO HOWARD ST.
as made by the Norfolk County Commissioners
by Return Dated September 4, 1951
Horizontal Scale: 1 inch = 40 feet.
Vertical Scale: 1 inch = 8 feet.
Wallace S. Carson, County Engineer.
Frederick D. Bennett, CHAIRMAN.



Bench Mark:
A U. S. Coast and Geodetic and
State survey bound No. GA27A
located in East Braintree, on the
N.Y., N.H., & H.R.R. Right of Way about
600 feet east of Allen Street
railroad crossing; 94 feet west
of south abutment of Bridge
No. 136 over the Monadnock
River; 17.8 feet south of the south
rail and about 55 feet north of the
bank of the river. Elev. = 32.34 V.C.

CRIF. ORDER RELOCATION BK. 3038 PG. 281, OCT. 18, 1951
TRG. BK. 3032 PG. 206; PL. BK. 166, PLS. 1115 & 1116 REC. SEPT. 21, 1951

Date of Entry October 4, 1951
(EASEMENT TAKING)