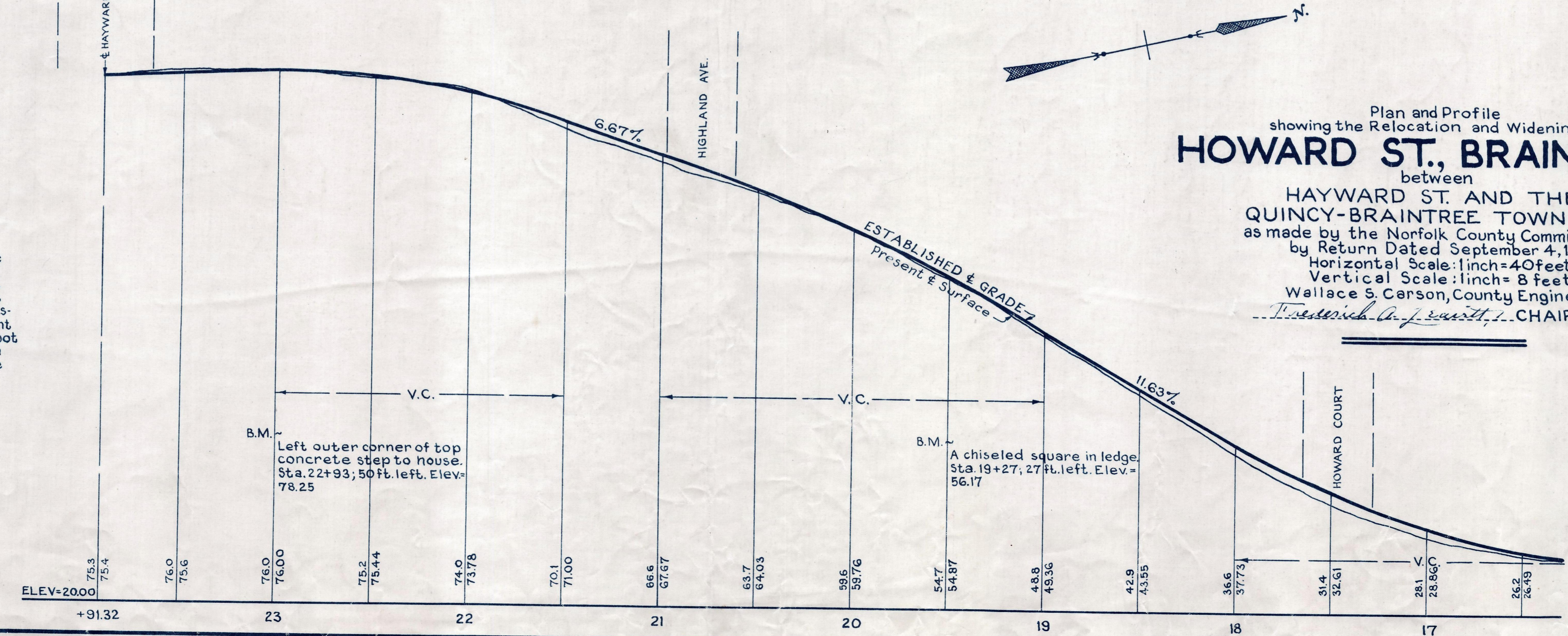


Plan and Profile  
showing the Relocation and Widening of  
**HOWARD ST., BRAINTREE**  
between  
HAYWARD ST. AND THE  
QUINCY-BRAINTREE TOWN LINE  
as made by the Norfolk County Commissioners  
by Return Dated September 4, 1951  
Horizontal Scale: 1 inch = 40 feet  
Vertical Scale: 1 inch = 8 feet  
Wallace S. Carson, County Engineer  
*Frederick A. J. Swift, Jr.* CHAIRMAN

**BENCH MARK:**  
A U. S. Coast & Geodetic and State  
Survey Bound No. 6A27A located  
in East Braintree, on the N.Y., N.H. &  
H. R.R. Right of Way about 600 feet  
east of Allen Street railroad cross-  
ing; 94 feet west of south abutment  
of Bridge No. 1.36 over the Monaquot  
River; 17.8 feet south of the south  
rail and about 55 feet north of the  
bank of the river. Elev. = 32.34



(EASEMENT TAKING)