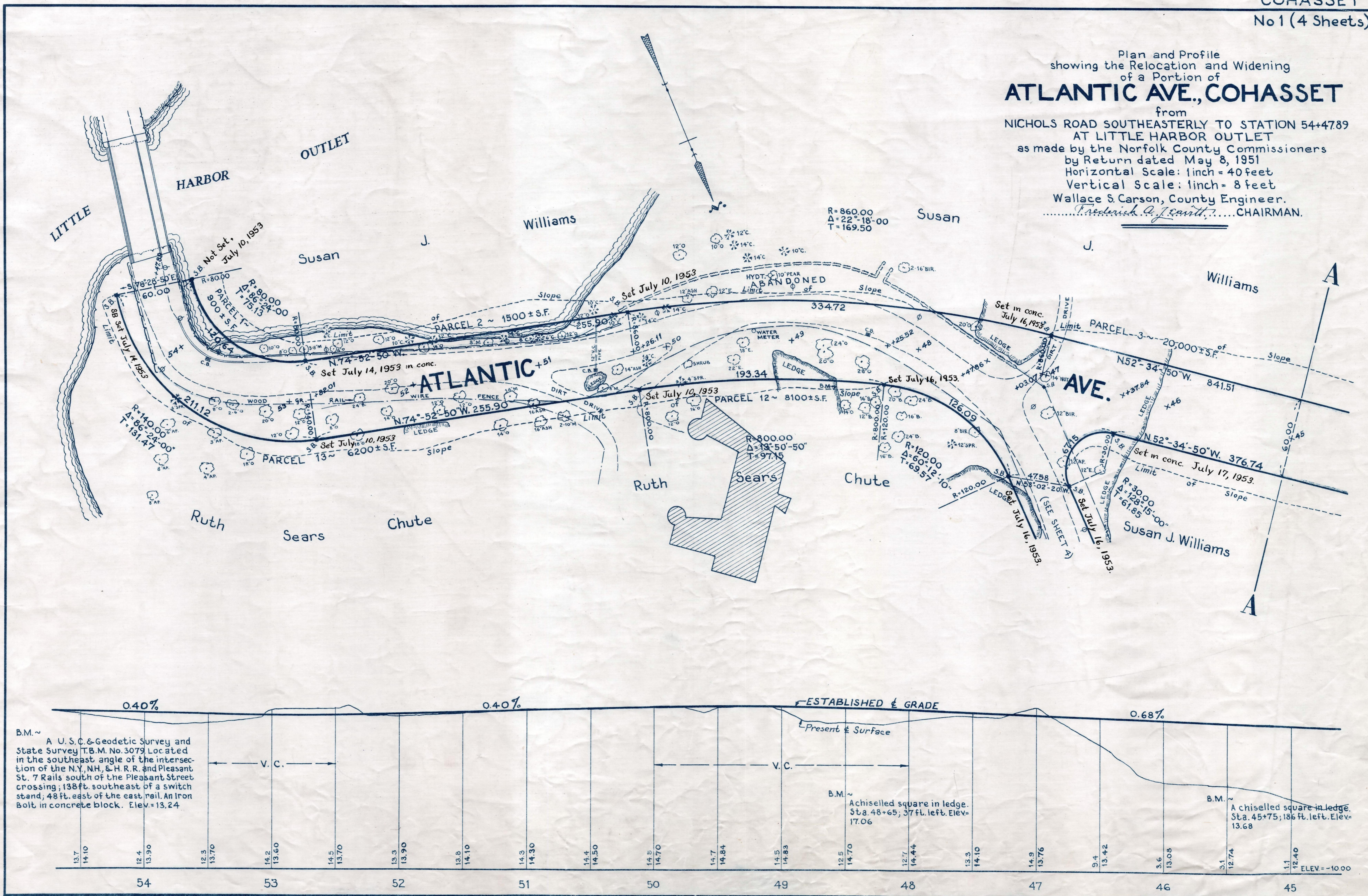


Plan and Profile  
showing the Relocation and Widening  
of a Portion of  
**ATLANTIC AVE., COHASSET**  
from  
NICHOLS ROAD SOUTHEASTERLY TO STATION 54+47.89  
AT LITTLE HARBOR OUTLET  
as made by the Norfolk County Commissioners  
by Return dated May 8, 1951  
Horizontal Scale: 1 inch = 40 feet  
Vertical Scale: 1 inch = 8 feet  
Wallace S. Carson, County Engineer.  
*Frederick A. J. Smith, CHAIRMAN.*



CRTF. ORDER RELOCATION BK. 3006 PG. 567 JUNE 4, 1951  
TKG. BK. 3002 PG. 482 ; PL. BK. 165, PLS. 578 TO 581 INCL. REC. MAY 17, 1951

Date of Entry May 10, 1951  
(EASEMENT TAKING)