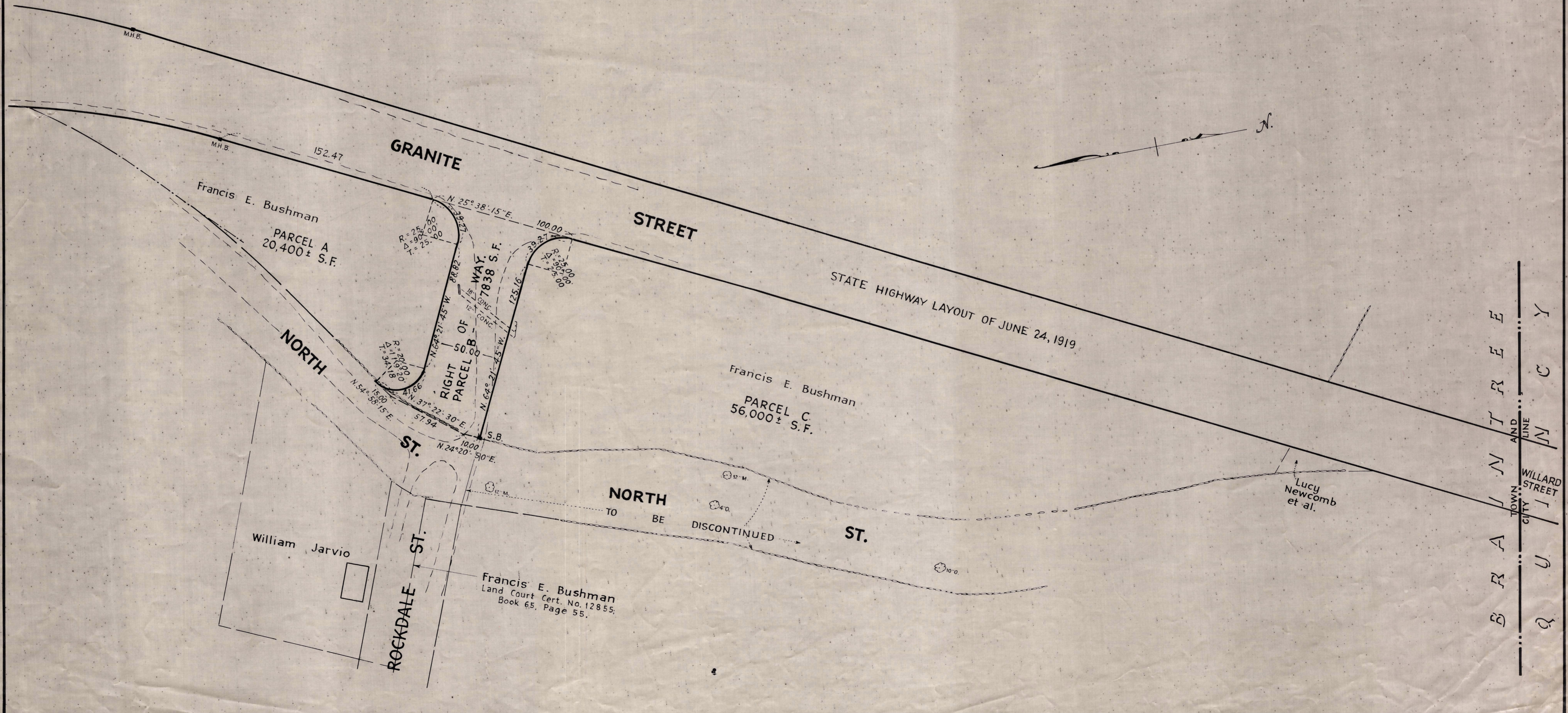
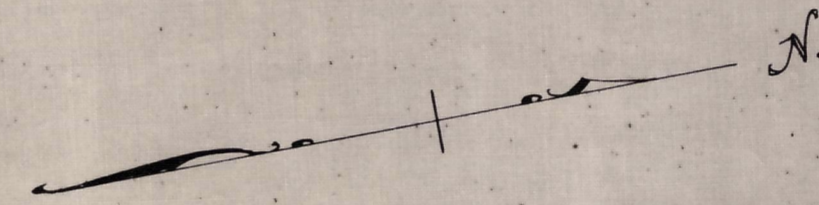


Plan showing
RIGHT OF WAY
 Established by
Francis E. Bushman
 between
NORTH STREET AND GRANITE STREET
BRAINTREE, MASS.
 Scale: 1 inch = 40 feet. May 1950.
 Wallace S. Carson, County Engineer.

Recorded
 162 of 1951 Pl.Bk. 161



Plan BK. 161 PL. 162
 BK. 2981 Pg. 362

OFFICE COPY