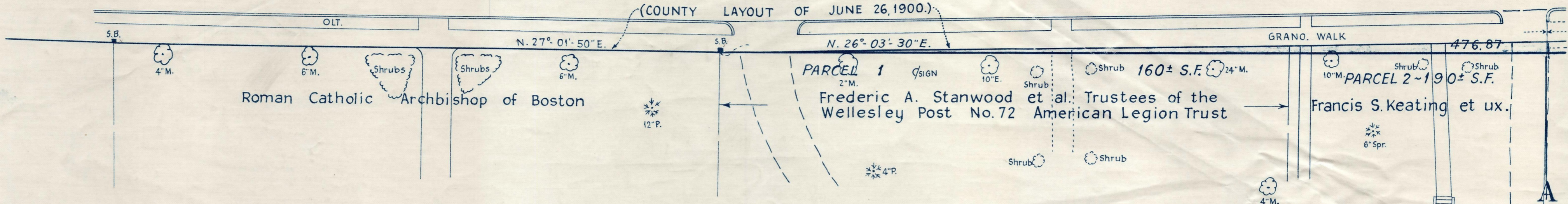
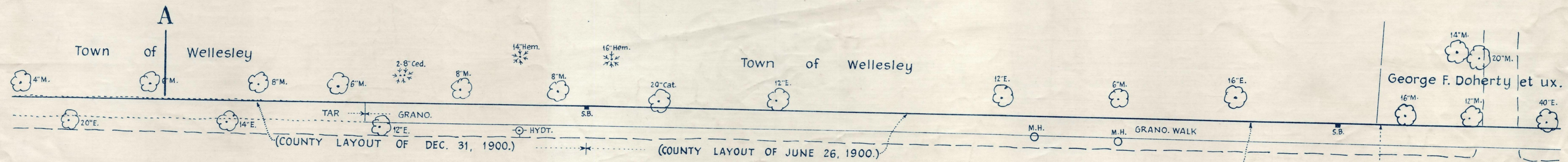
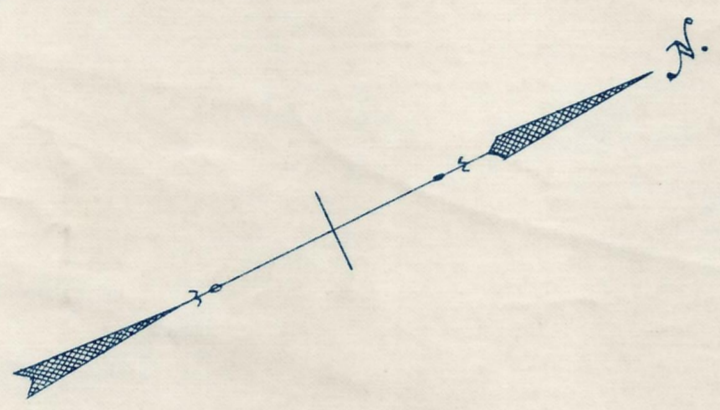


WASHINGTON STREET

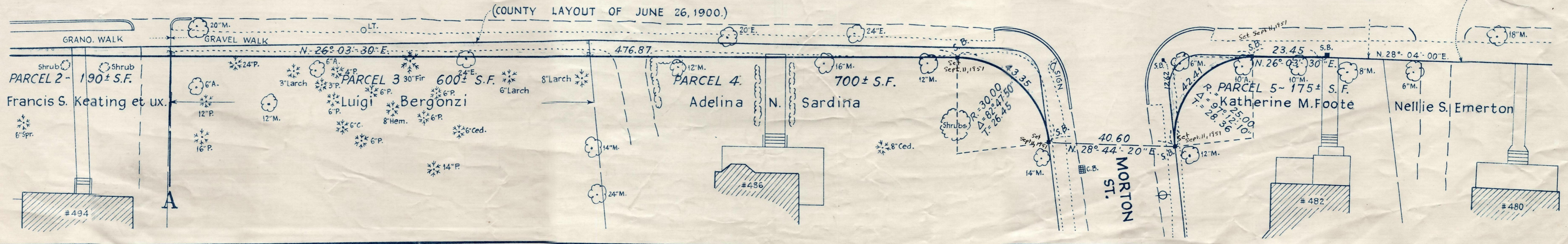


Plan showing the Relocation of the Easterly Line of WASHINGTON STREET, WELLESLEY

from
 ABOUT 500 FEET SOUTH TO ABOUT 100 FEET NORTH OF MORTON STREET
 as made by the Norfolk County Commissioners
 by Return dated October 31, 1950.
 Scale: 1 inch = 20 feet.
 Wallace S. Carson County Engineer.
Frederick A. Leavitt CHAIRMAN.



WASHINGTON STREET



CRTF. ORDER RELOCATION BK. 3031 PG. 54 SEPT. 17, 1951
 TRG. BK. 2961 PG. 272 ; PL. BK. 160 PL. 1371 REC. NOV. 10, 1950

362
 Date of Entry Aug 31, 1951