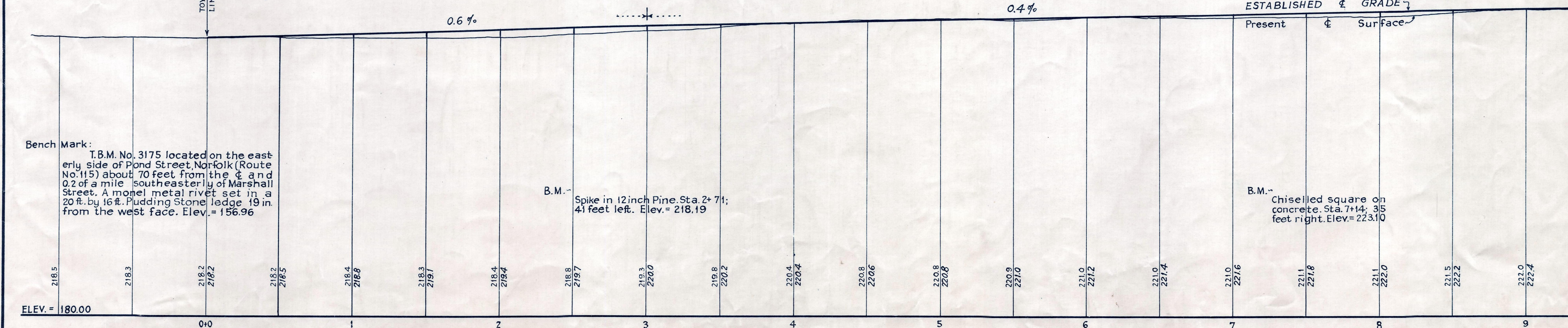
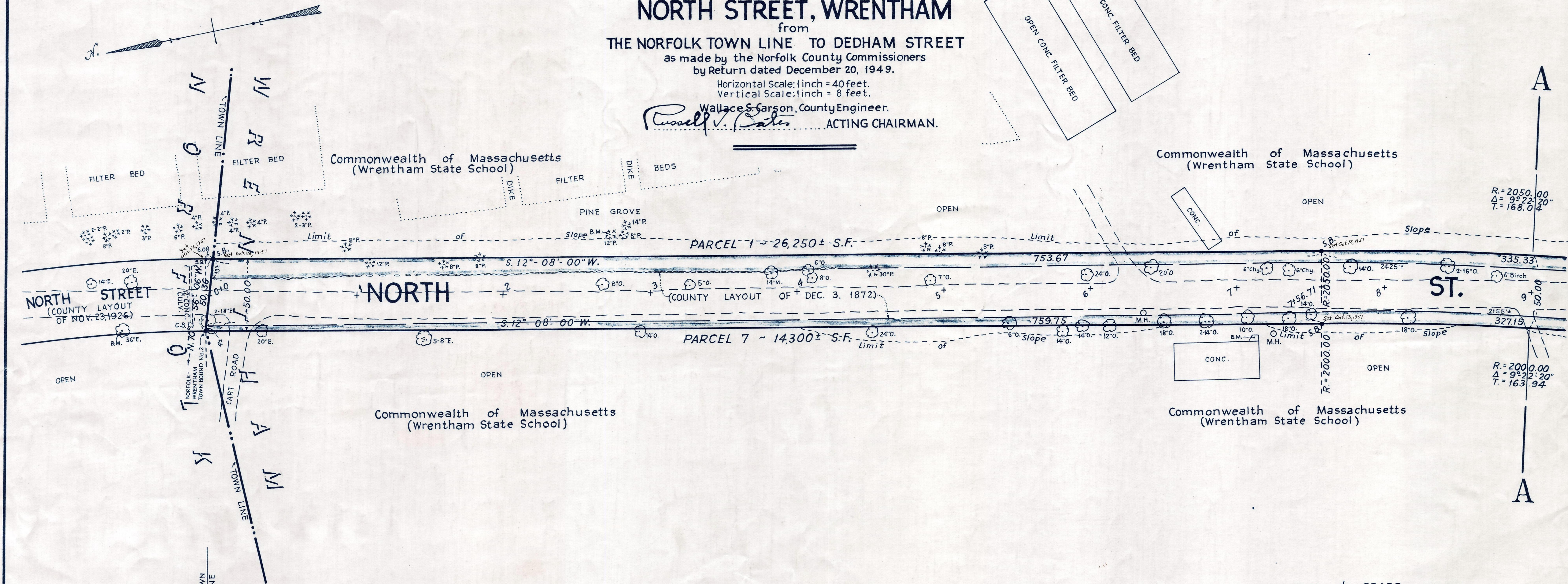
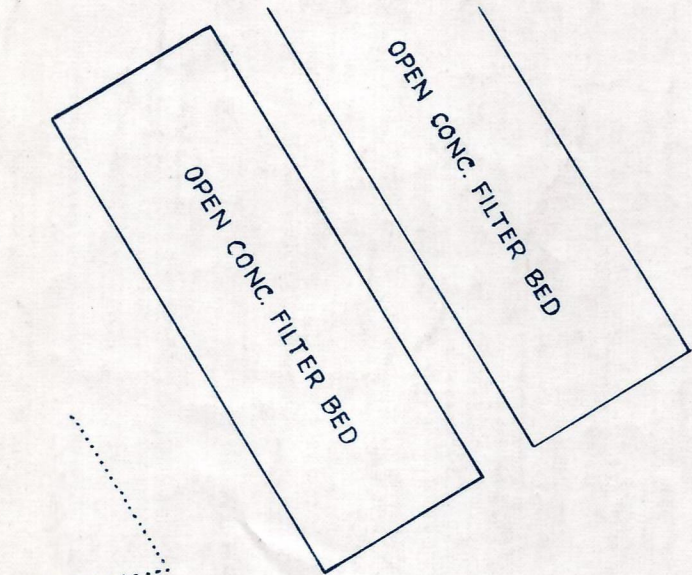


Plan and Profile  
showing the Relocation and Widening  
of  
**NORTH STREET, WRENTHAM**  
from  
**THE NORFOLK TOWN LINE TO DEDHAM STREET**  
as made by the Norfolk County Commissioners  
by Return dated December 20, 1949.  
Horizontal Scale: 1 inch = 40 feet.  
Vertical Scale: 1 inch = 8 feet.  
Wallace S. Garson, County Engineer.  
*Russell V. Bates* ACTING CHAIRMAN.



Bench Mark:  
T.B.M. No. 3175 located on the east  
erly side of Pond Street, Norfolk (Route  
No. 115) about 70 feet from the  $\phi$  and  
0.2 of a mile southeasterly of Marshall  
Street. A monel metal rivet set in a  
20 ft. by 16 ft. Plugging Stone ledge 19 in.  
from the west face. Elev. = 156.96

B.M. - Spike in 12 inch Pine. Sta. 2+71;  
41 feet left. Elev. = 218.19

B.M. - Chiselled square on  
concrete. Sta. 7+14; 35  
feet right. Elev. = 223.10

ELEV. = 180.00