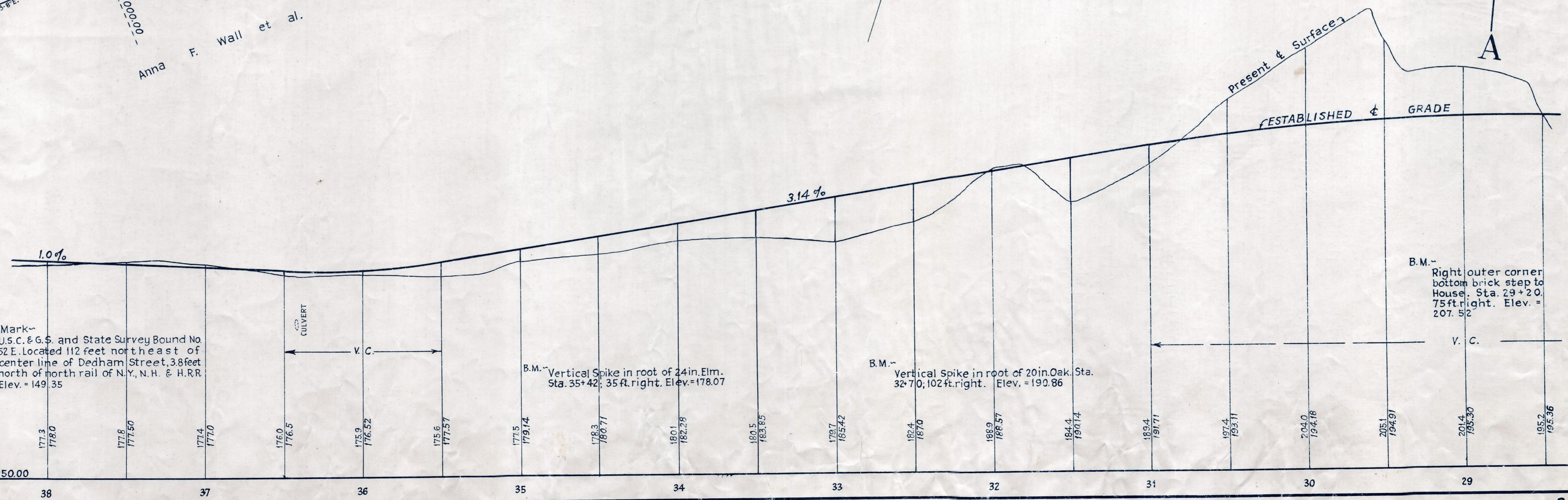
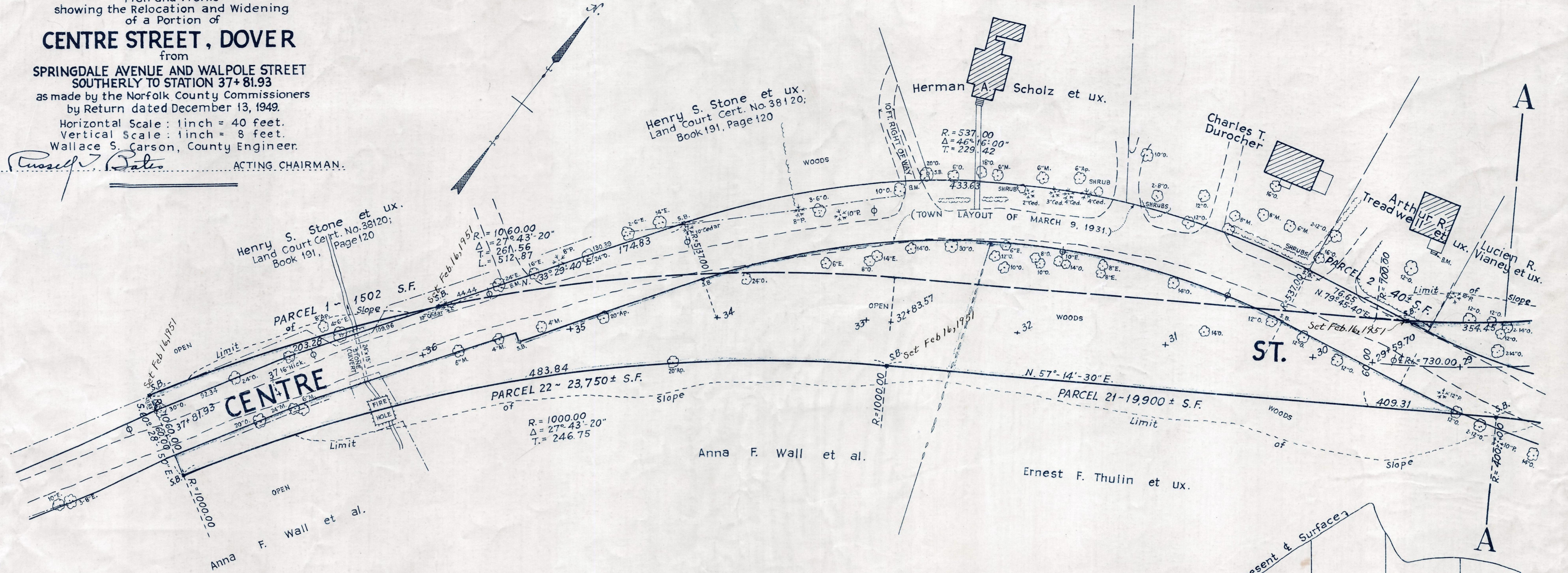
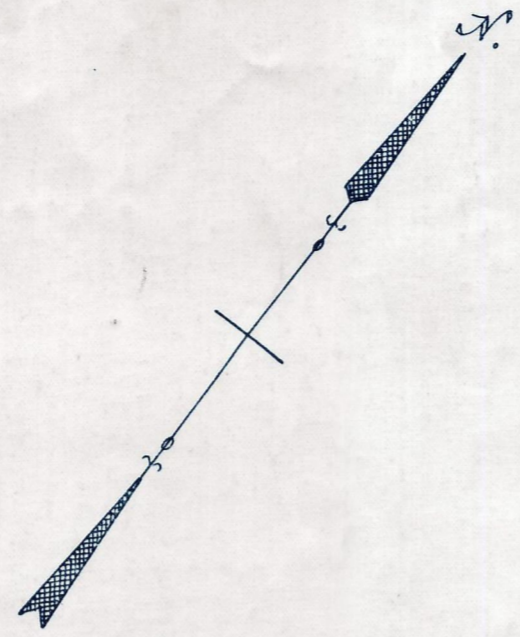


Plan and Profile showing the Relocation and Widening of a Portion of CENTRE STREET, DOVER

from SPRINGDALE AVENUE AND WALPOLE STREET SOUTHERLY TO STATION 37+81.93 as made by the Norfolk County Commissioners by Return dated December 13, 1949. Horizontal Scale: 1 inch = 40 feet. Vertical Scale: 1 inch = 8 feet. Wallace S. Carson, County Engineer.

Russell Bates ACTING CHAIRMAN.



Bench Mark-- U.S.C. & G.S. and State Survey Bound No. 52 E. Located 112 feet north east of center line of Dedham Street, 3.8 feet north of north rail of N.Y., N.H. & H.R.R. Elev. = 149.35

B.M. - Vertical Spike in root of 24 in. Elm. Sta. 35+42; 35 ft. right. Elev. = 178.07

B.M. - Vertical Spike in root of 20 in. Oak. Sta. 32+70; 102 ft. right. Elev. = 190.86

B.M. - Right outer corner bottom brick step to House. Sta. 29+20. 75 ft. right. Elev. = 207.52