

# Plan showing the Relocation of a Portion of WASHINGTON STREET, BRAINTREE

between THE NEW YORK, NEW HAVEN AND HARTFORD RAILROAD COMPANY AND CHURCH STREET

as made by the Norfolk County Commissioners by Return dated August 31, 1949.

Scale: 1 inch = 20 feet.

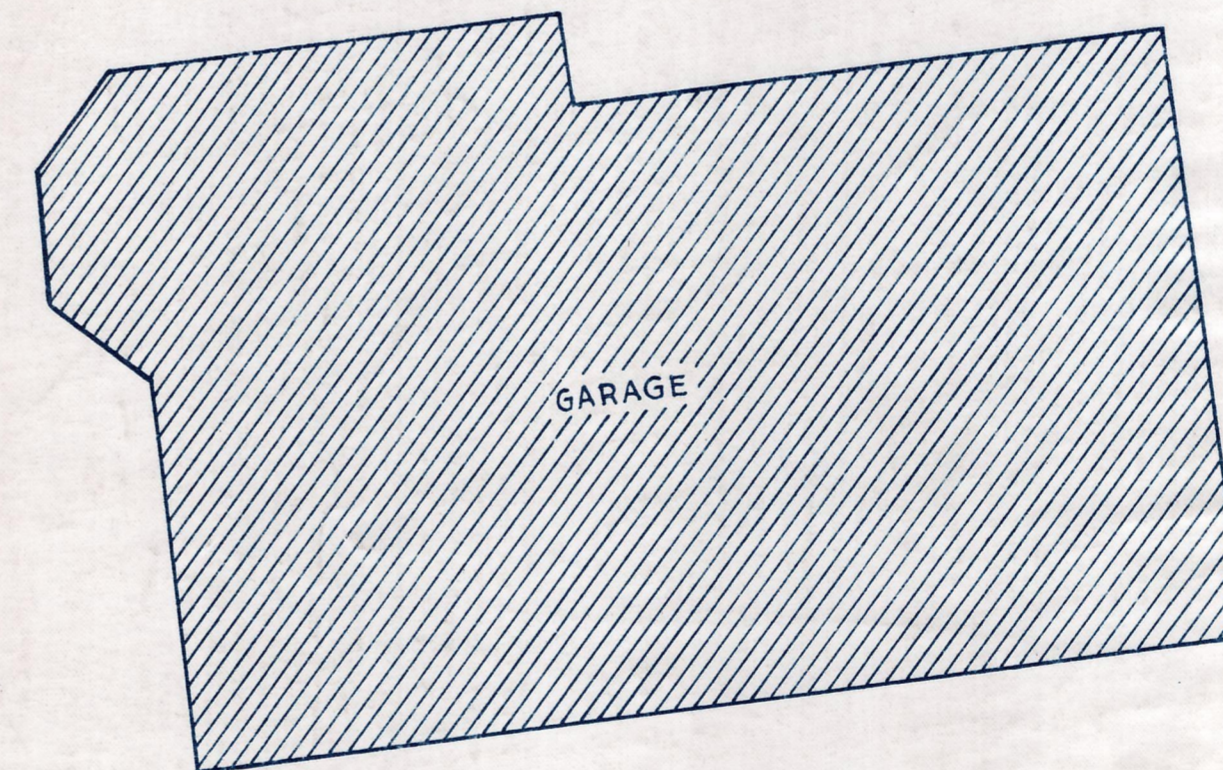
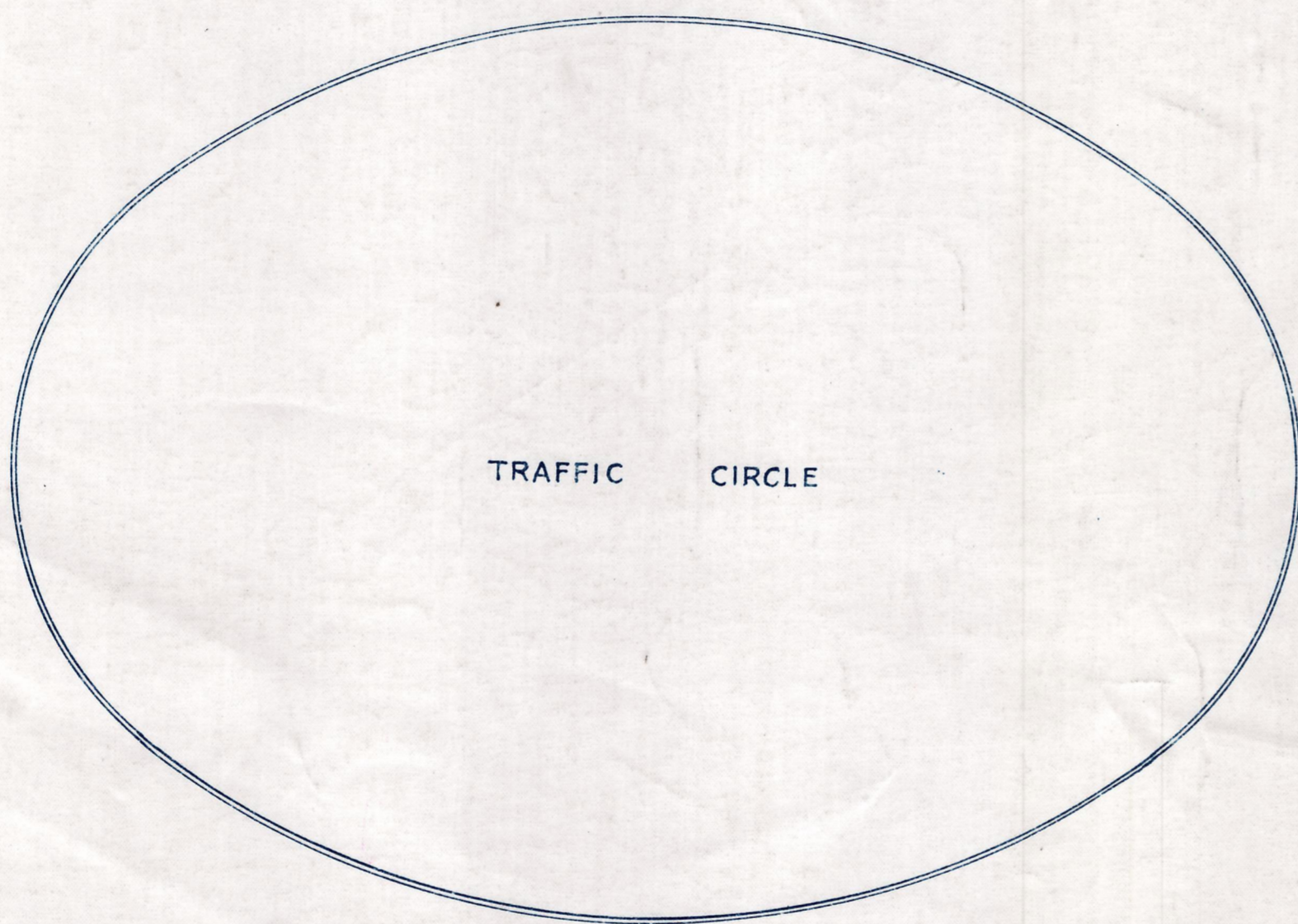
Wallace S. Carson, County Engineer.

Frederick A. Jewett, CHAIRMAN.

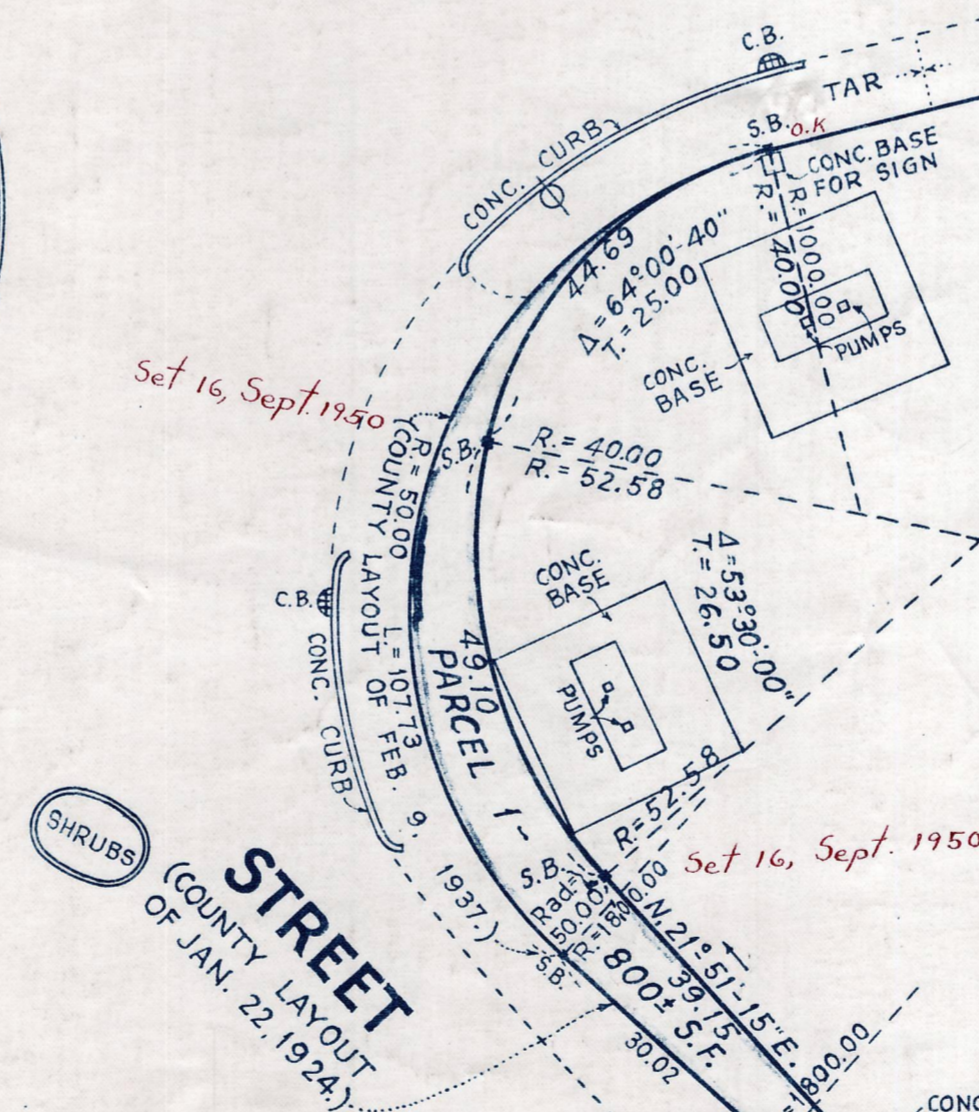
WASHINGTON  
(COUNTY LAYOUT OF JAN. 22, 1924.)

STREET

CHURCH  
(COUNTY LAYOUT OF FEB. 9, 1937.)



Ralph T. and Helen C. Conner



SIDE LINE OF LOCATION

BASE LINE OF LOCATION

New York, New Haven and Hartford Railroad Company



EASE.