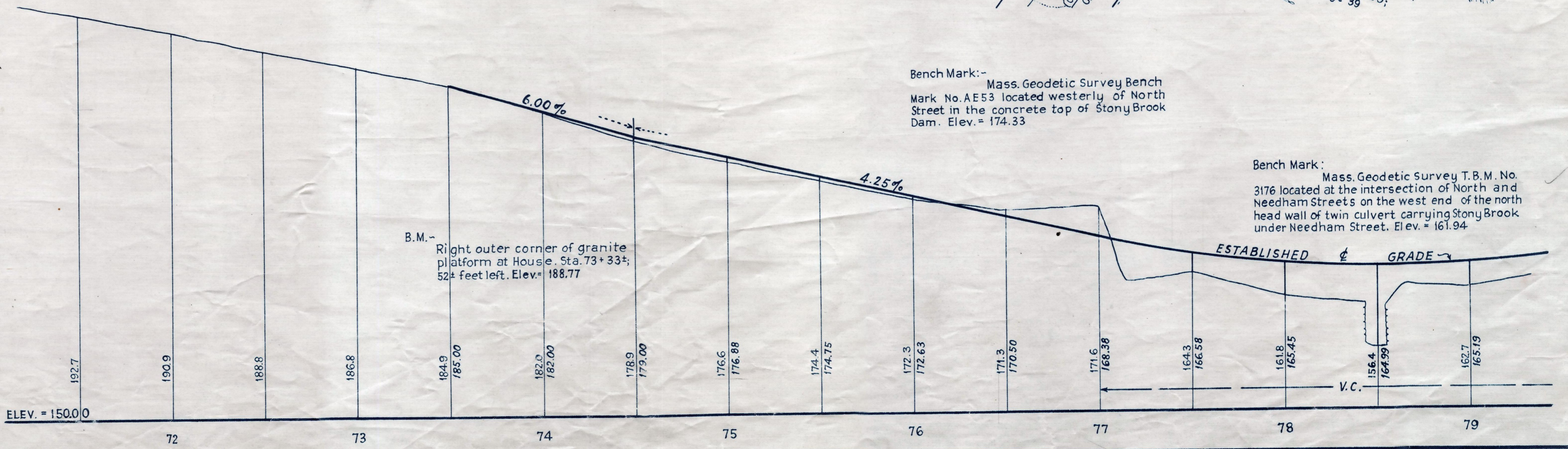
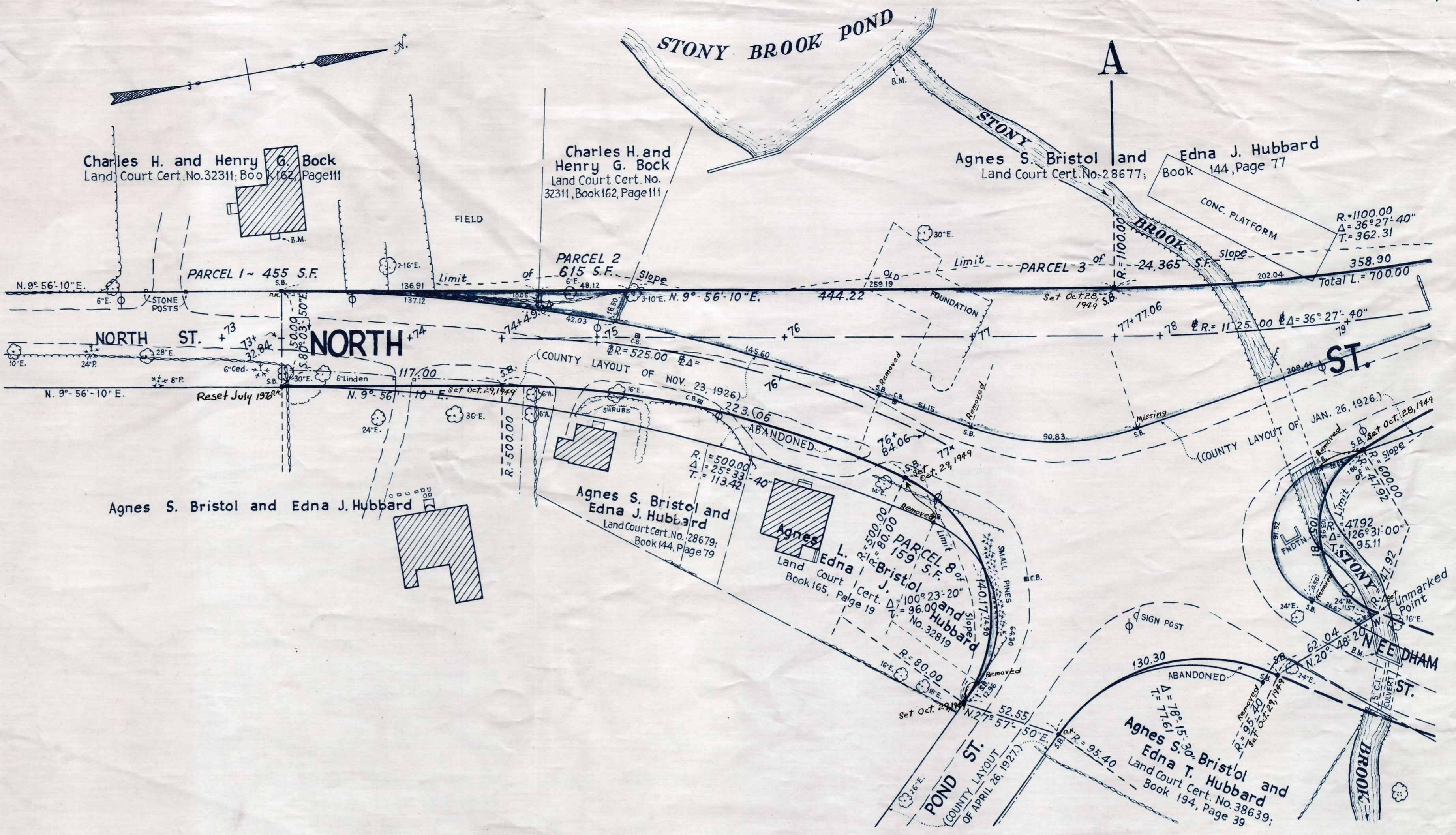


Plan and Profile  
showing the Relocation and Widening  
of a Portion of  
**NORTH STREET, NORFOLK**  
from  
STATION 73+32.84 TO STATION 84+92.97  
as made by the Norfolk County Commissioners  
by Return dated July 5, 1949.

Horizontal Scale: 1 inch = 40 feet.  
Vertical Scale: 1 inch = 8 feet.  
Wallace S. Carson, County Engineer.

*Fredrick A. Leavitt* CHAIRMAN.



Bench Mark:- Mass. Geodetic Survey Bench Mark No. AE53 located westerly of North Street in the concrete top of Stony Brook Dam. Elev. = 174.33

Bench Mark: Mass. Geodetic Survey T.B.M. No. 3176 located at the intersection of North and Needham Streets on the west end of the north head wall of twin culvert carrying Stony Brook under Needham Street. Elev. = 161.94

B.M. - Right outer corner of granite platform at House, Sta. 73+33.2; 52.2 feet left. Elev. = 188.77