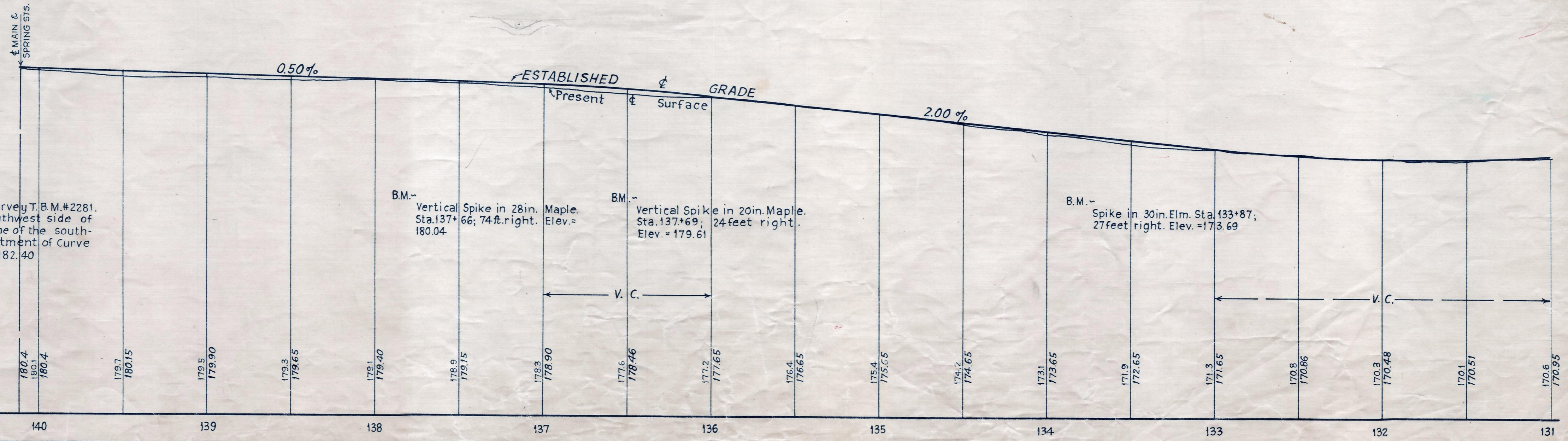
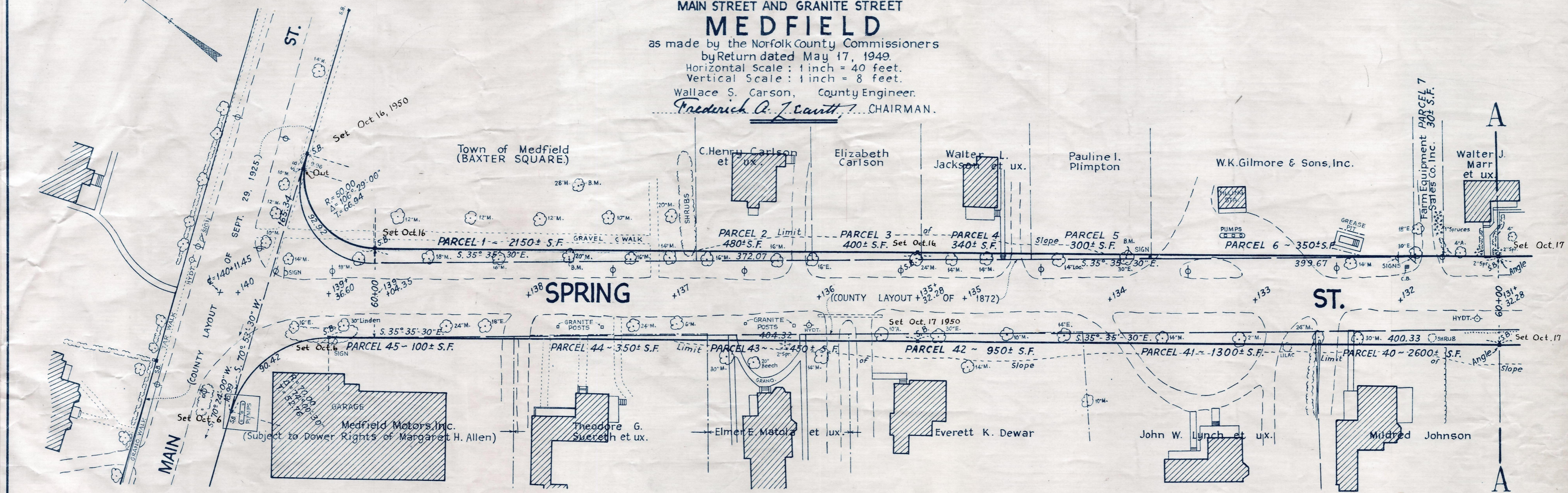


Plan and Profile
 showing the Relocation and Widening of
SPRING STREET
 and a Portion of
SOUTH AND HIGH STREETS
 between
MAIN STREET AND GRANITE STREET
MEDFIELD

as made by the Norfolk County Commissioners
 by Return dated May 17, 1949.
 Horizontal Scale: 1 inch = 40 feet.
 Vertical Scale: 1 inch = 8 feet.
 Wallace S. Carson, County Engineer.
Frederick A. Z. Cantt. CHAIRMAN.



Bench Mark:-
 Mass. Geodetic Survey T.B.M.#2281.
 A steel rivet located on the southwest side of
 the N.Y. N.H. & H.R.R. on the top stone of the south-
 west wing of the northwest abutment of Curve
 Street overpass bridge. Elev. = 182.40

B.M.-
 Vertical Spike in 28in. Maple.
 Sta. 137+66; 74ft. right.
 Elev. = 180.04

B.M.-
 Vertical Spike in 20in. Maple.
 Sta. 137+69; 24feet right.
 Elev. = 179.61

B.M.-
 Spike in 30in. Elm. Sta. 133+87;
 27feet right. Elev. = 173.69