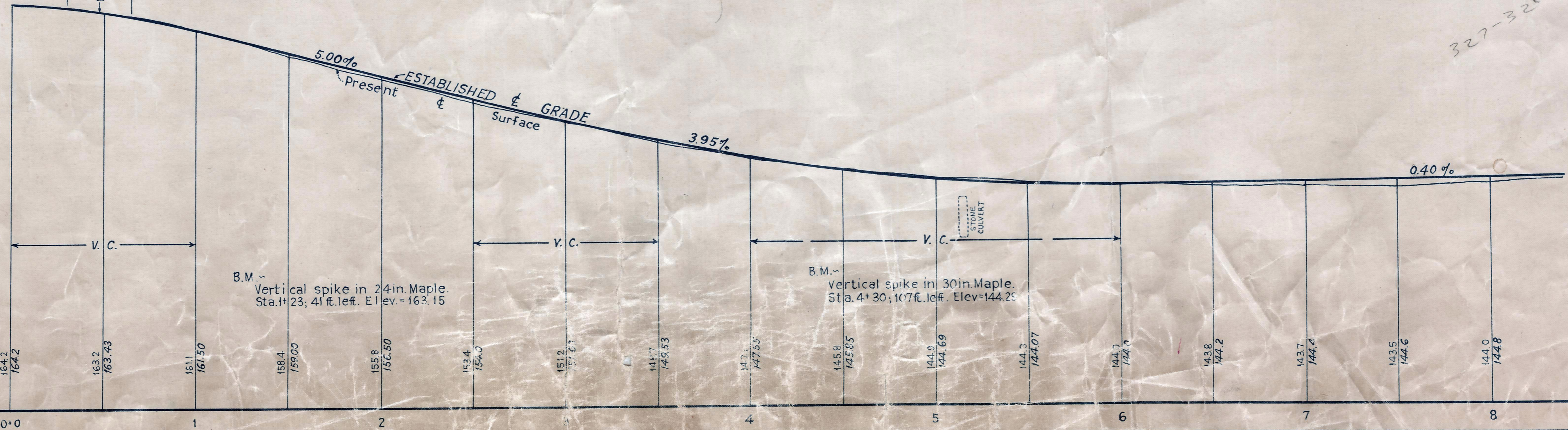
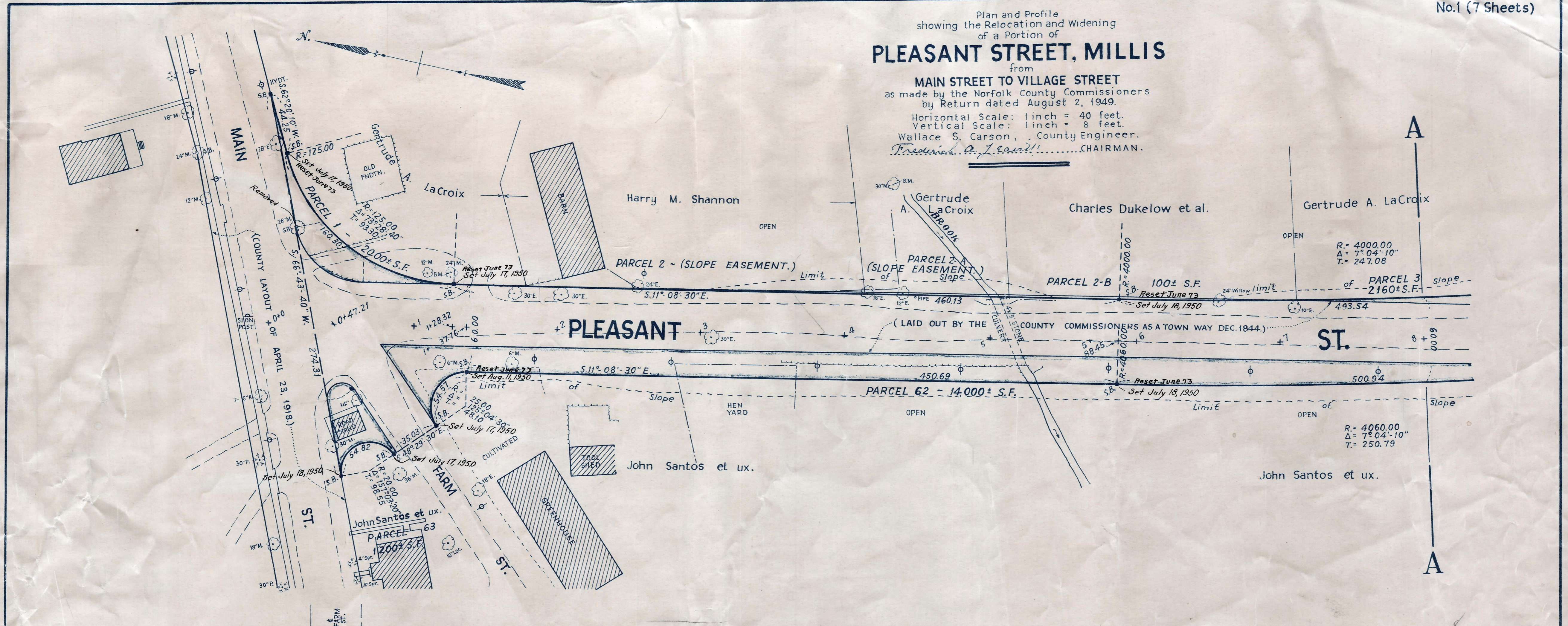


Plan and Profile  
showing the Relocation and Widening  
of a Portion of  
**PLEASANT STREET, MILLIS**  
from  
**MAIN STREET TO VILLAGE STREET**  
as made by the Norfolk County Commissioners  
by Return dated August 2, 1949.  
Horizontal Scale: 1 inch = 40 feet.  
Vertical Scale: 1 inch = 8 feet.  
Wallace S. Carson, County Engineer.  
*Frederick A. J. Savitt* CHAIRMAN.



Bench Mark:  
A U.S.C. & G.S. and State Survey  
Bound No. 52 G, located in the western part  
of the Town of Millis, 41.8 ft. northwest  
of the northwest rail of the N.Y. N.H. & H.R.R.  
on tangent of rail produced, 2 feet east of  
fence on property line and 1510 ft. south-  
west of center line of Main St. crossing.  
Elev. = 179.46

CRIC ORDER RELOCATION BK. 2891 PG. 419 FEB. 16, 1950  
TKG. BK. 2851 PG. S67, PL. BK. 152, PLS. 885 TO 891 INCL. REC. AUG. 23, 1949

350-1

Date of Entry Dec. 20, 1949.