

Plan and Profile showing the Relocation and Widening of NORTH STREET, MEDFIELD

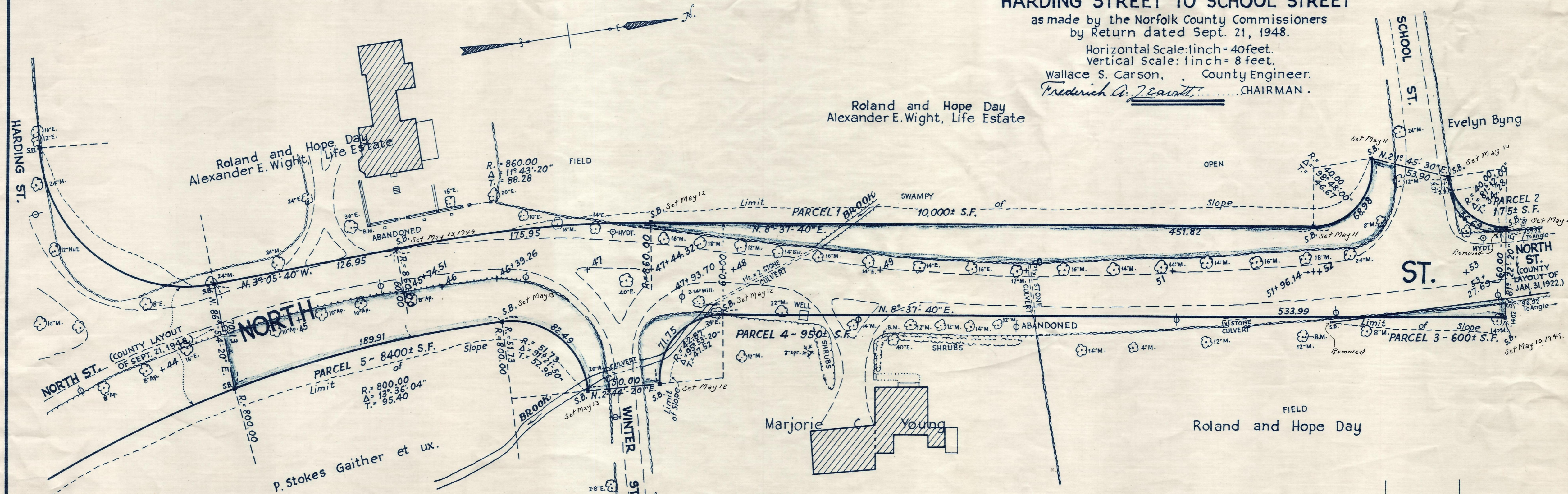
from
HARDING STREET TO SCHOOL STREET

as made by the Norfolk County Commissioners
by Return dated Sept. 21, 1948.

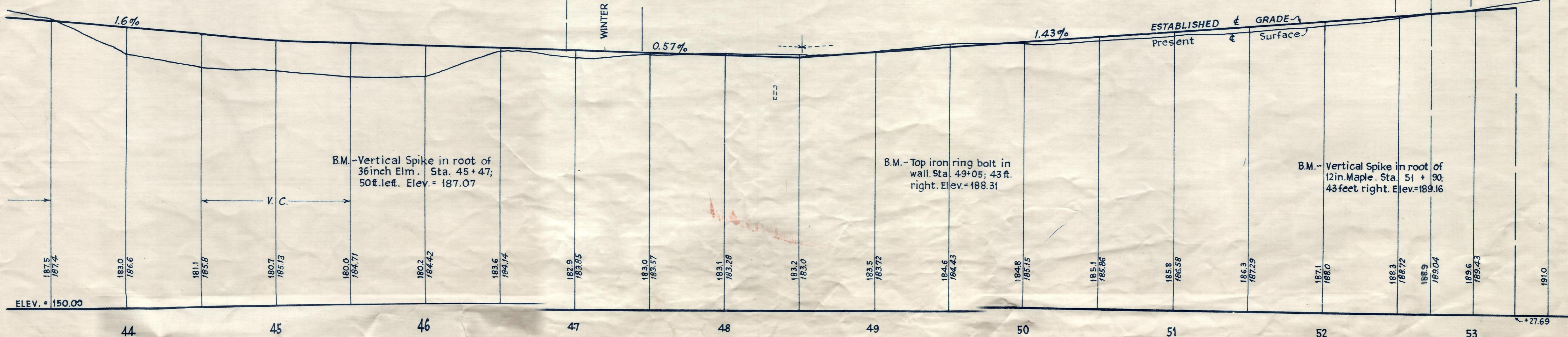
Horizontal Scale: 1 inch = 40 feet.
Vertical Scale: 1 inch = 8 feet.

Wallace S. Carson, County Engineer.
Fredrick A. J. Savitt, CHAIRMAN.

Roland and Hope Day
Alexander E. Wight, Life Estate



Bench Mark:
U.S.C. & G. Survey and State Survey Bound No. 35 Q, located on
the N.Y. N.H. & H.R.R. and 26 feet southerly from the center line
of Main Street, 6 feet from the southwest rail and 48.5 feet south-
west of a catch basin on south side of street. Elev. = 179.66



CRTE. ORDER RELOCATION BK. 2826 PG. 381 AFR. 28, 1949
TKG. BK. 2788 PG. 525; PL. BK. 147 PL. 987 REC. OCT. 14, 1948

(Date of Entry April 18, 1949)