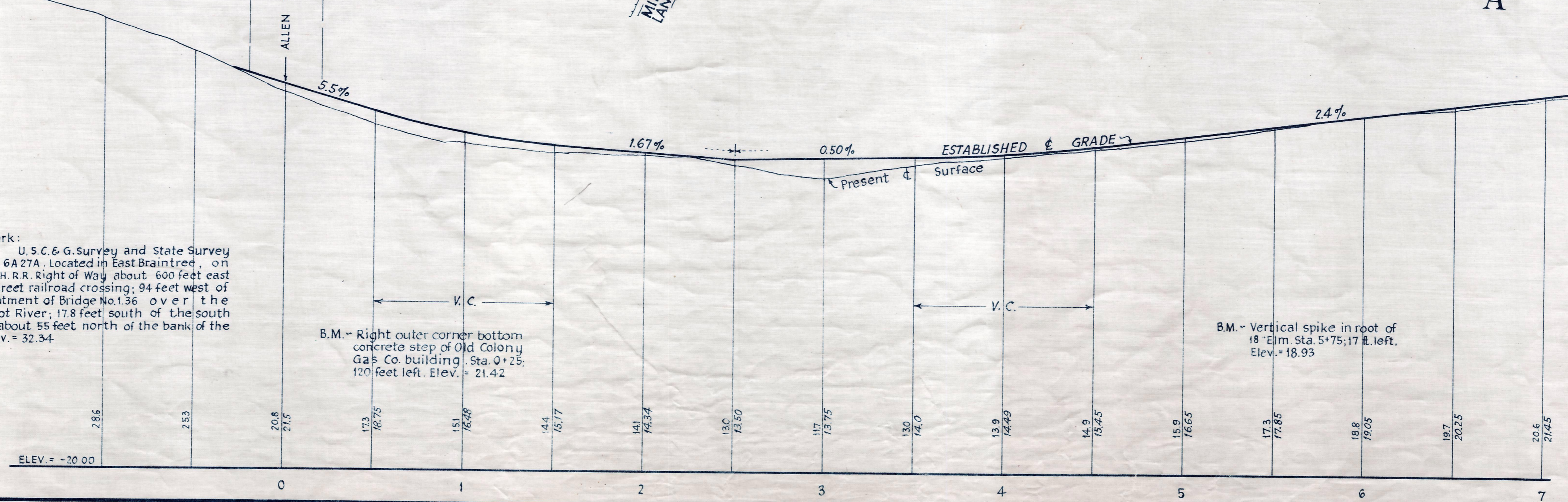
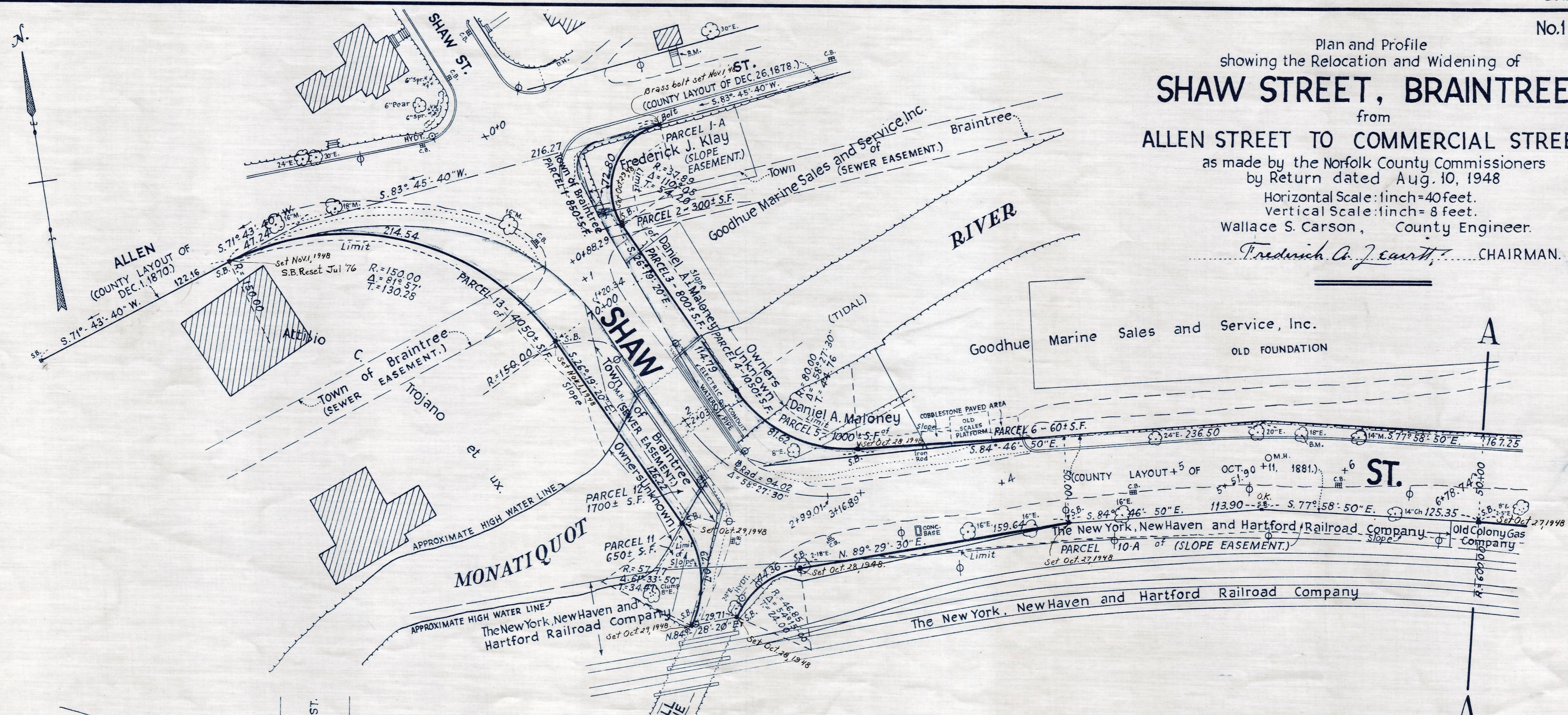


Plan and Profile
showing the Relocation and Widening of
SHAW STREET, BRAINTREE
from
ALLEN STREET TO COMMERCIAL STREET
as made by the Norfolk County Commissioners
by Return dated Aug. 10, 1948
Horizontal Scale: 1 inch = 40 feet.
Vertical Scale: 1 inch = 8 feet.
Wallace S. Carson, County Engineer.
Fredrick A. J. Courtt. CHAIRMAN.



Bench Mark: U.S.C. & G. Survey and State Survey Bound No. 6A 27A. Located in East Braintree, on N.Y. N.H. & H.R.R. Right of Way about 600 feet east of Allen Street railroad crossing; 94 feet west of south abutment of Bridge No. 136 over the Monatiquot River; 17.8 feet south of the south rail and about 55 feet north of the bank of the river. Elev. = 32.34

B.M. - Right outer corner bottom concrete step of Old Colony Gas Co. building. Sta. Q+25; 120 feet left. Elev. = 21.42

B.M. - Vertical spike in root of 18" Elm Sta. 5+75; 17 ft. left. Elev. = 18.93

EASE.

Date of Entry Sept. 1, 1948.