

Plan and Profile
showing the Relocation and Widening of
NORTH STREET, MEDFIELD

from
MAIN STREET TO HARDING STREET

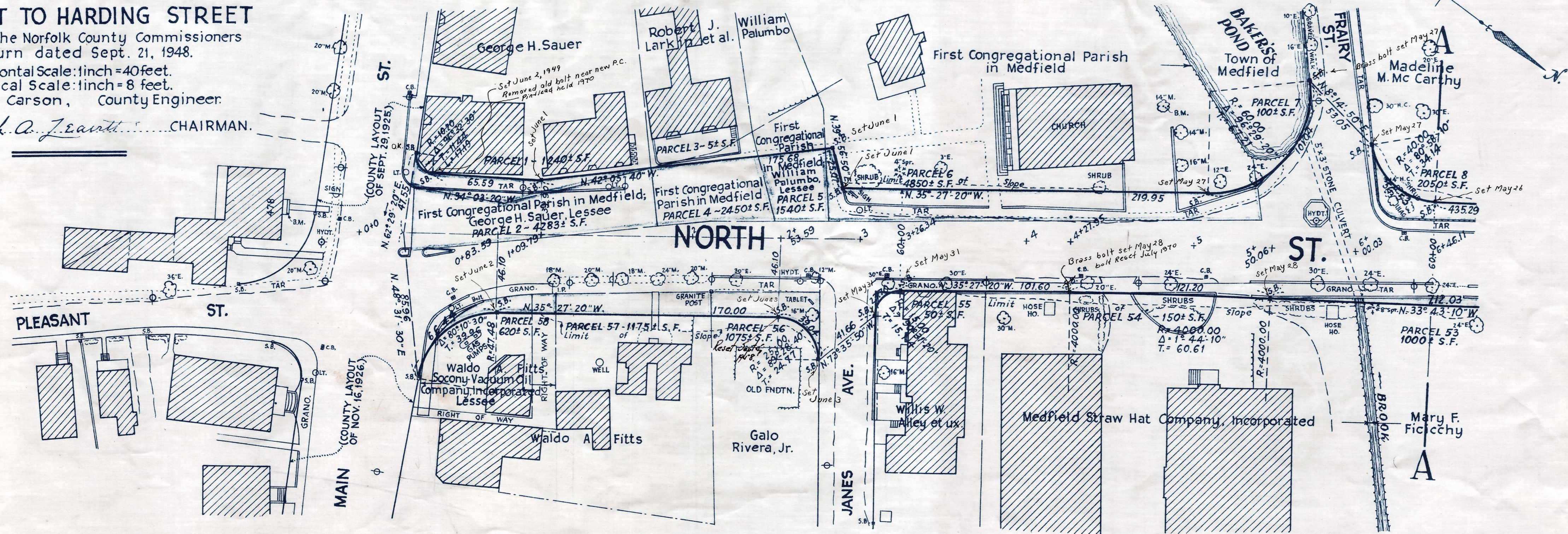
as made by the Norfolk County Commissioners
by Return dated Sept. 21, 1948.

Horizontal Scale: 1 inch = 40 feet.

Vertical Scale: 1 inch = 8 feet.

Wallace S. Carson, County Engineer.

Frederick A. Jewett CHAIRMAN.



Bench Mark:

U.S.C. & G. Survey and State Survey Bound No. 35 Q, located on the N.Y., N.H. & H.R.R. and 26 feet southerly from the center line of Main Street; 6 feet from the southwest rail and 48.5 feet southwest of a catch basin on south side of street. Elev. = 179.66

B.M. - Left outer corner of bottom stone step to House No. 478 Main Street, located at southwesterly corner of Main and Pleasant Streets. Elev. = 185.61

