

Plan and Profile showing the Relocation and Widening of GROVE STREET, FOXBOROUGH

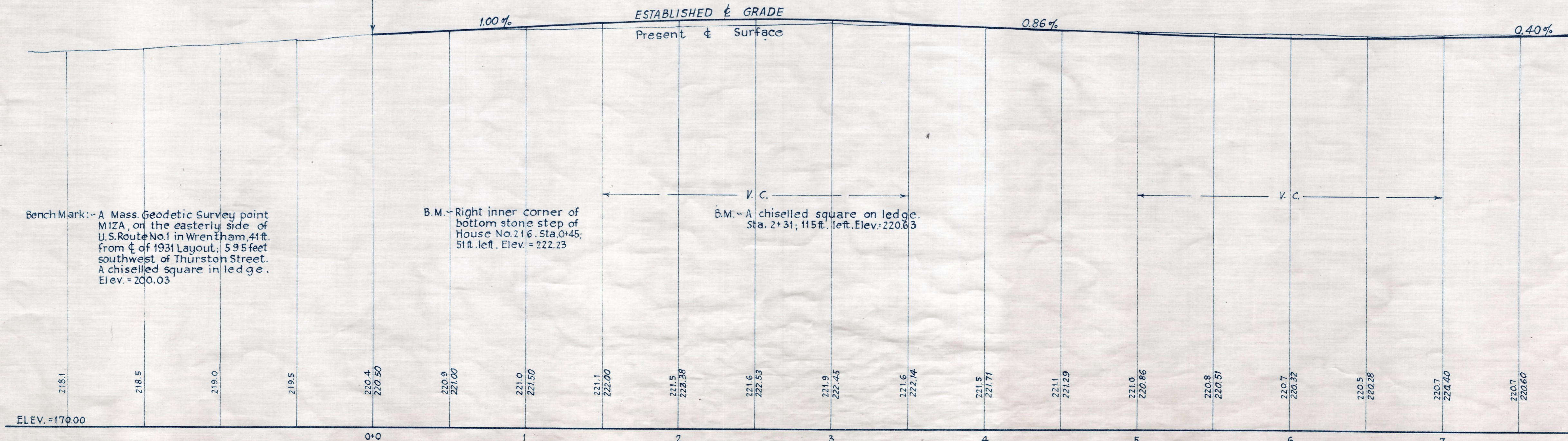
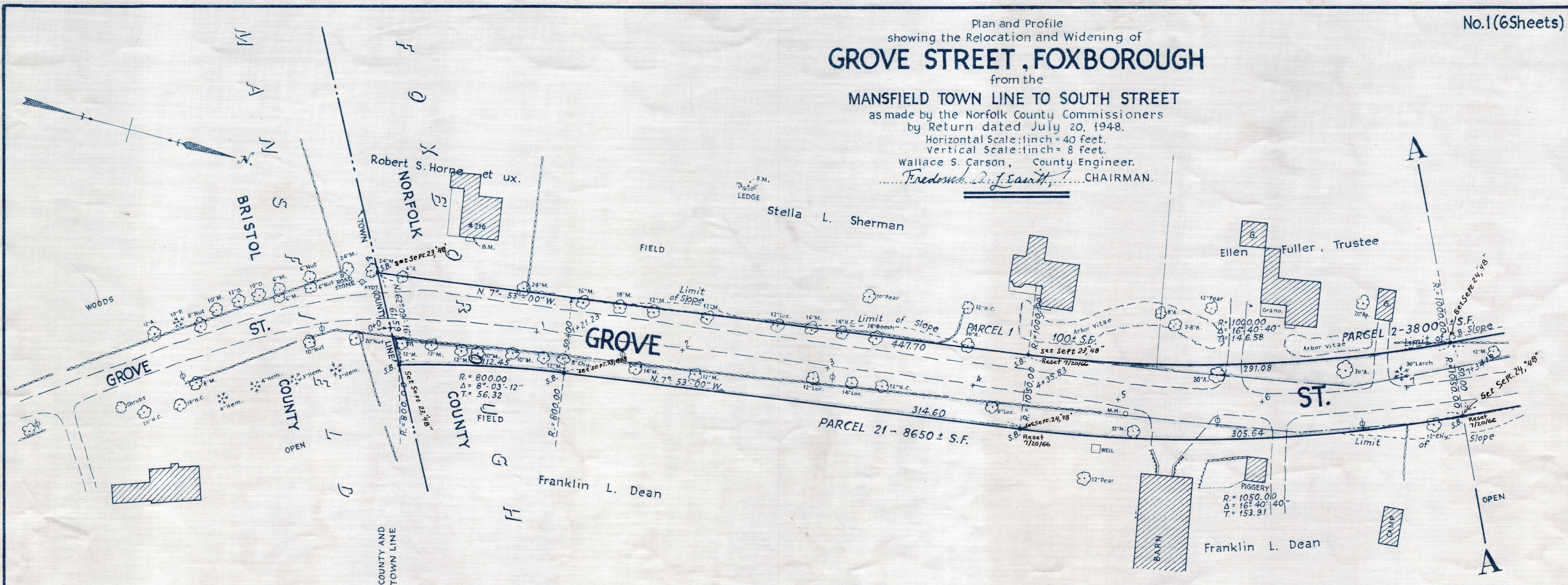
from the MANSFIELD TOWN LINE TO SOUTH STREET

as made by the Norfolk County Commissioners by Return dated July 20, 1948.

Horizontal Scale: 1 inch = 40 feet.
Vertical Scale: 1 inch = 8 feet.

Wallace S. Carson, County Engineer.

Frederick A. J. Smith, CHAIRMAN.



Bench Mark: - A Mass. Geodetic Survey point MIZA, on the easterly side of U.S. Route No. 1 in Wrentham, 41 ft. from C of 1931 Layout, 59.5 feet southwest of Thurston Street. A chiselled square in ledge. Elev. = 200.03

B.M. - Right inner corner of bottom stone step of House No. 216. Sta. 0+45; 51 ft. left. Elev. = 222.23

B.M. - A chiselled square on ledge. Sta. 2+31; 115 ft. left. Elev. = 220.63

CRF. ORDER RELOCATION BK. 2783 PG. 153, SEPT. 21, 1948
TKG. BK. 2772 PG. 382; PL. BK. 146 PLS. 671 TO 676 INCL. REC. AUG. 3, 1948

341-1

Date of Entry Aug. 26, 1948.