

# SUMMER STREET, MEDWAY

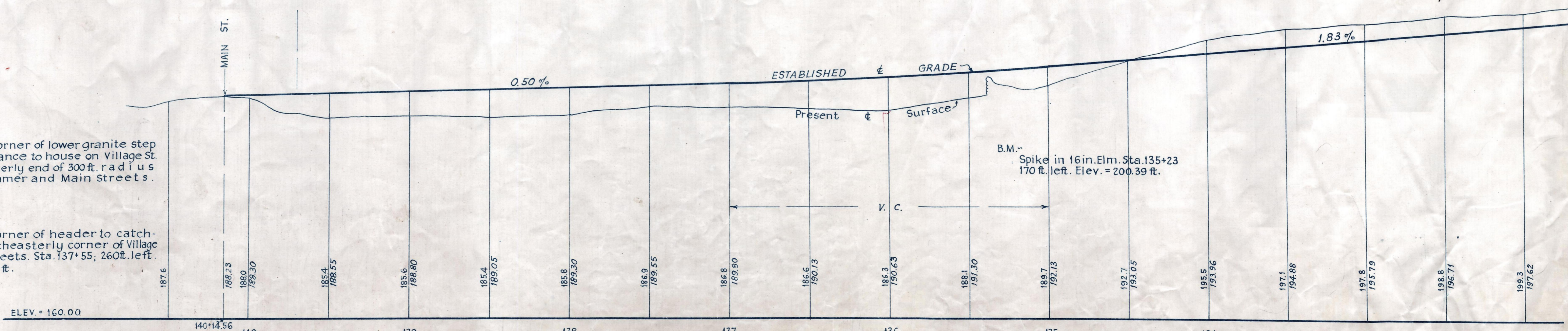
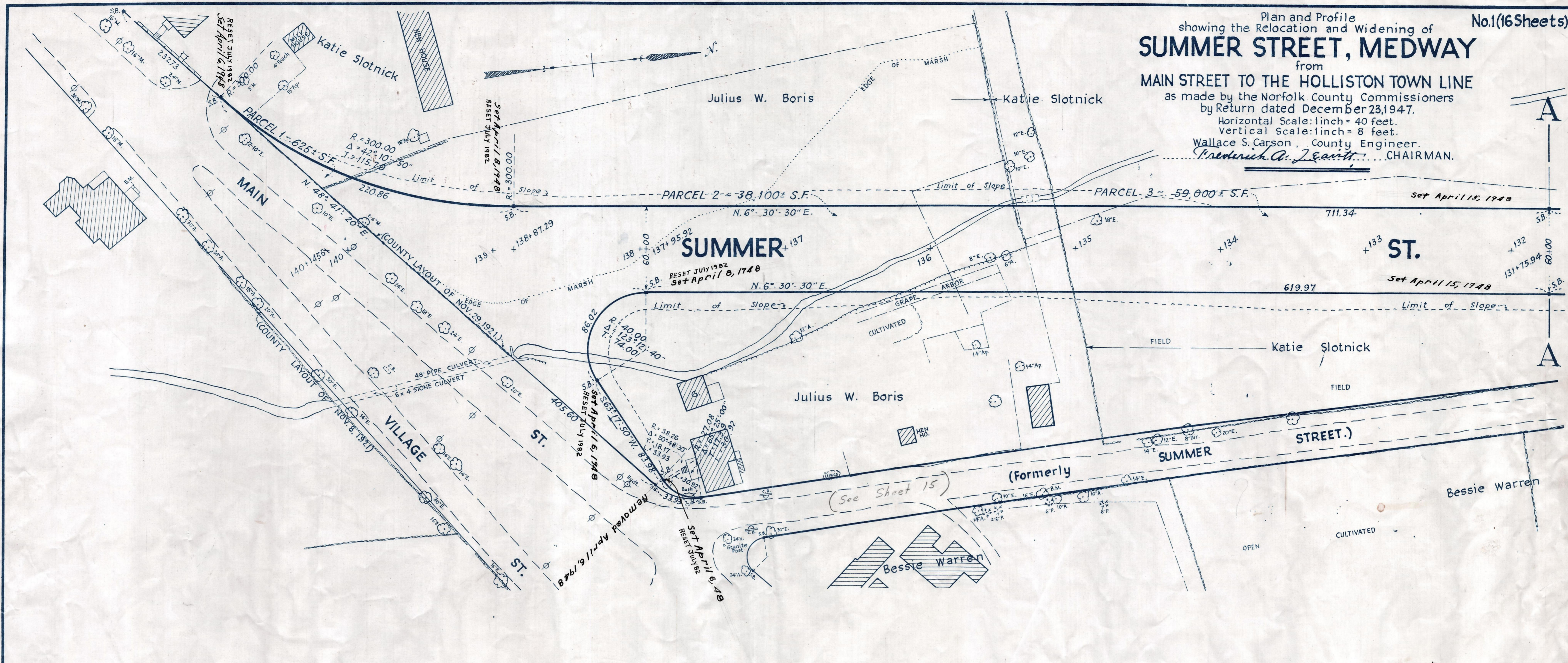
from  
MAIN STREET TO THE HOLLISTON TOWN LINE

as made by the Norfolk County Commissioners  
by Return dated December 23, 1947.

Horizontal Scale: 1 inch = 40 feet.  
Vertical Scale: 1 inch = 8 feet.

Wallace S. Carson, County Engineer.

*Friedrich A. J. Earth* CHAIRMAN.



B.M. - Right outer corner of lower granite step at main entrance to house on Village St. opposite westerly end of 300 ft. radius curve at Summer and Main Streets. Elev. = 188.85

B.M. - Southeast corner of header to catch-basin at northeasterly corner of Village and Main Streets. Sta. 137+55; 260 ft. left. Elev. = 193.79 ft.

COMPLETE